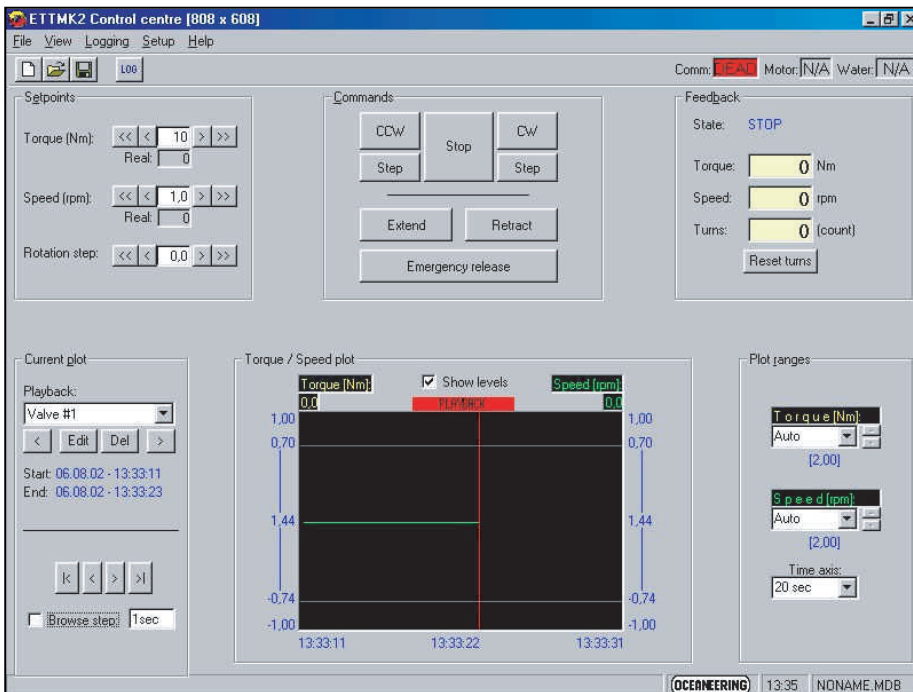


# ELECTRICAL TORQUE TOOL

## Technical Data / Specifications

Torque Range	0-140 Nm
Electronic Turn Counter	
Resolution	1/10th of a turn
Torque Sensor Accuracy	less than 0.1% FS
Motors	Brushless Servo Motor
Power Requirement	170VDC
Weight In Air	29 kg
Weight In Water	21 kg
Length	500 mm
Diameter	300 mm
Depth Rating	1,000 m
Transport Box Dimensions	80 X 60 x 40



## Overview

Oceaneering's Electric API 17D LowLow Torque Tool has been designed for operation on small gate and needle valves. This tool is operated through an Oceaneering Remote Control Unit providing live torque and revolution feedback. The tool can be delivered with a wide range of interchangeable endeffectors.