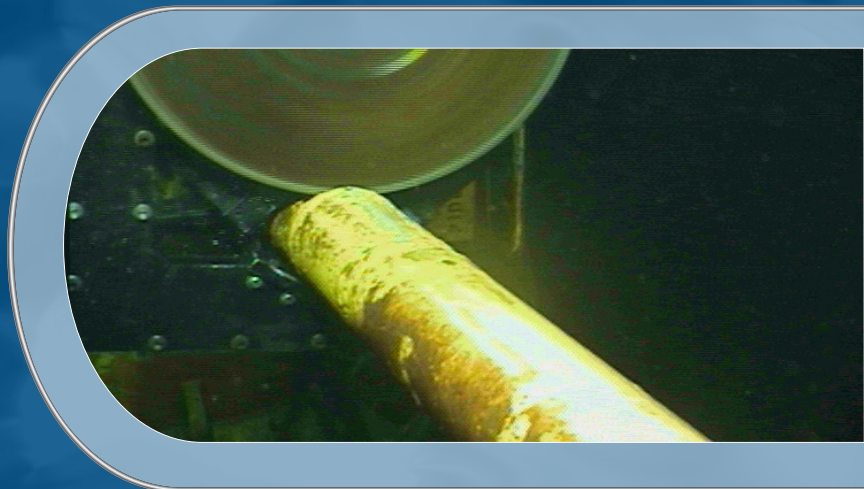
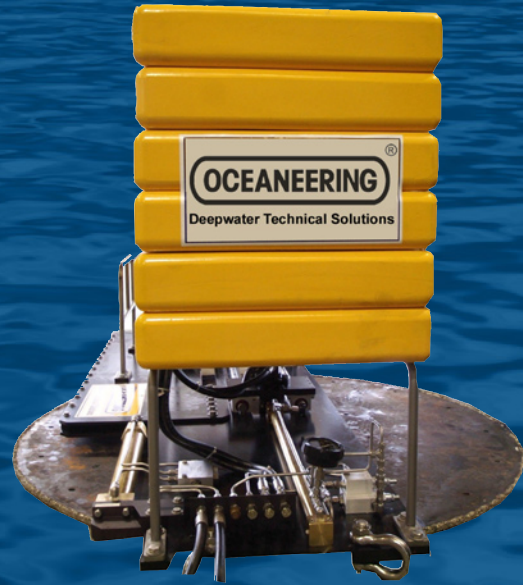


60-INCH DIAMETER CHOP SAW

Oceaneering chop saws, designed for seamless Remotely Operated Vehicle (ROV) cutting operations, can be utilized for pipelines, salvage and other offshore applications. The rugged, ROV friendly saws integrate with ROVs of opportunity for cutting pipes and other structural shapes. The saws easily cut many materials including syntactic, plastic, stainless steel, carbon steel and concrete. Various standard sizes of the chop saw can be mobilized, ready to dive within hours. Customized versions are also available.



60-INCH DIAMETER CHOP SAW

Clamp Cylinder

Pressure: 3,000 psi max input
 Flow: 1 GPM
 Connection Type: 1/4 in JIC

Feed Cylinder

Pressure (Approx): 350 psi cutting down, 575 psi horizontal, 800 psi cutting up
 Flow: 0.5 GPM
 Connection Type: 1/4 in JIC

Hydraulic Motor

Pressure: 2,800 psi min - 3,000 psi max input
 Flow: 10 to 12 GPM max input
 RPM: 100-120 (Maximum)
 Connection Type: 3/8 in JIC

Est. Saw Weight: 555 lb in air, 444 lb in SW

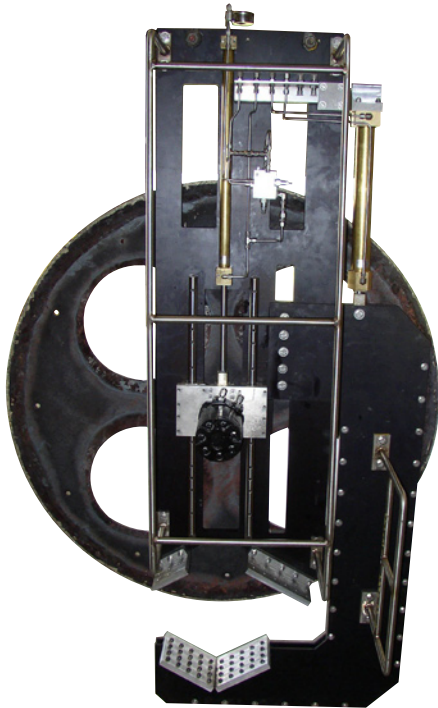
Flotation Foam

Density: 30 lb / ft³
 Weight (air): 387 lb
 Buoyancy (SW): 435 lb



Saw Size	Blade Diameter	Cut Range (Pipe O.D.)
22 in	22 in	1 in - 8 in All Profiles
32 in	32 in	6 in - 12 in All Profiles
40 in	40 in	8 in - 16 in All Profiles
54 in	54 in	14 in - 22 in All Profiles
60 in	60 in	18 in - 25 in All Profiles

All saws greater than 22-in have accompanying flotation.



Oceaneering International, Inc.
 11911 FM 529 • Houston, TX 77041 • Phone: 713.329.4500 • Fax: 713.329.4621
www.oceaneering.com