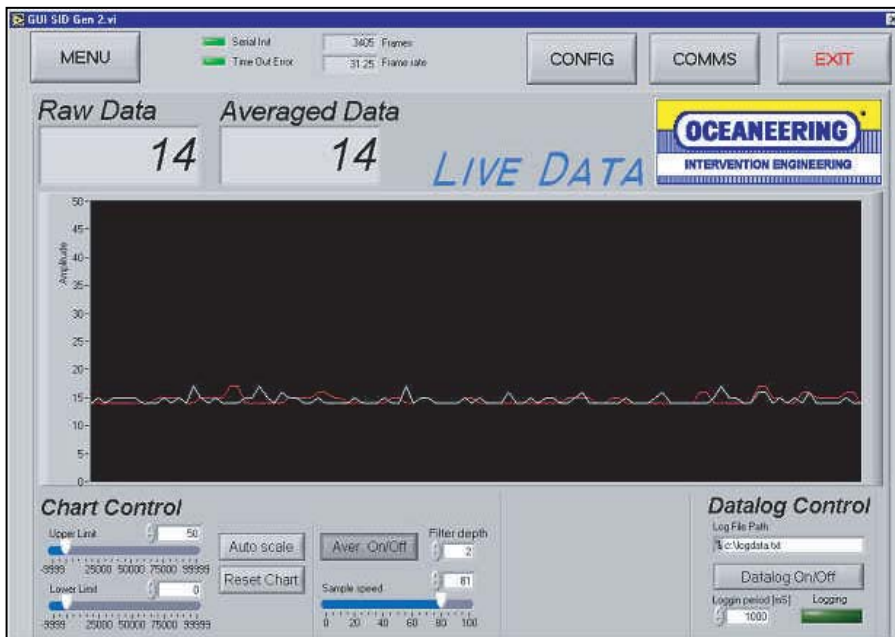


SUBSEA INTELLIGENT DISPLAY

Technical Data / Specifications

Maximum Depth Rating	10,000 fsw
Communications Link	RS232 @ 9600 baud
Power Requirement	External 12 vdc or internal battery
Material	316 SS



Overview

The Subsea Intelligent Display is a multi-purpose display that can take an input from various sources, such as pressure, torque and pH. It is primarily used in conjunction with subsea torque test jigs and pressure intelligent displays, but it can be used with a variety of other applications.

The Subsea Intelligent Display can be interfaced to an ROV via an RS232 link and can be powered by the ROV. The data can be monitored topside by a Graphical User Interface (GUI).