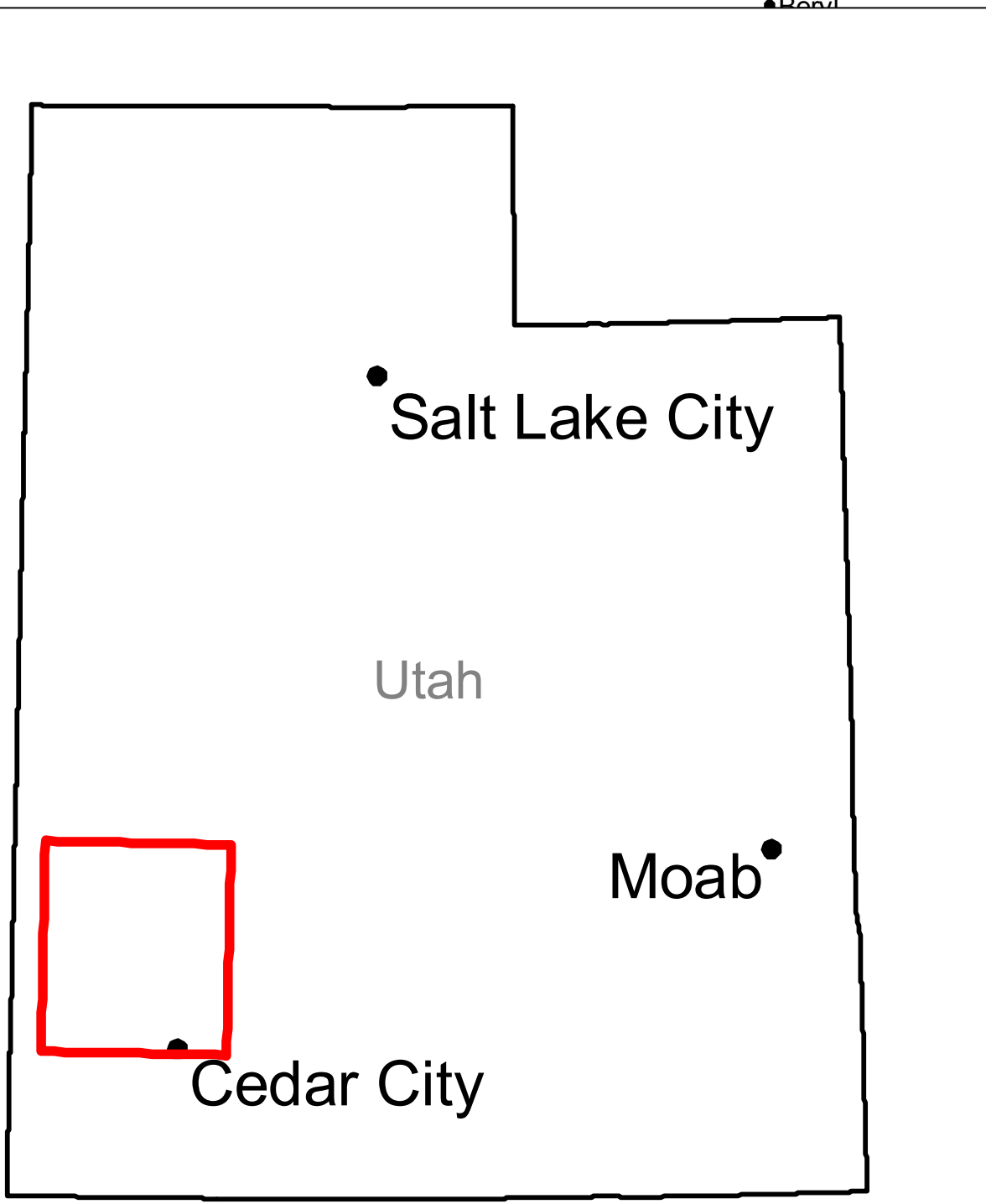
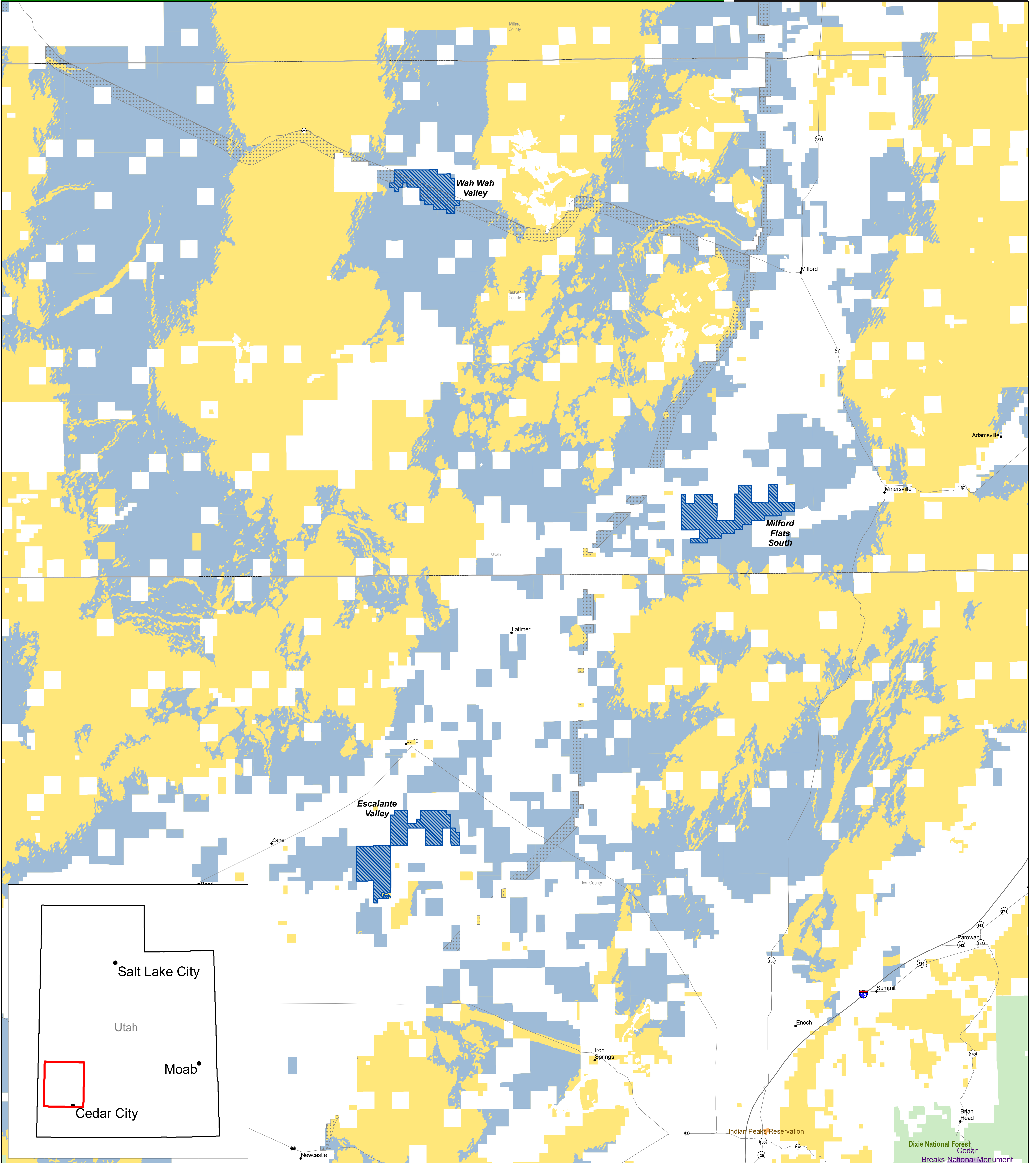


# Solar Energy Study Areas in Utah

Map Prepared June 5, 2009

Property of the U.S. Departments of Energy and the Interior for Use in preparation of their Programmatic Environmental Impact Statement to Develop and Implement Agency-Specific Programs for Solar Energy Development



Surface Management Agency As of 3/26/2009		
<span style="display:inline-block; width:10px; height:10px; background-color:orange;"></span> Tribal Lands	<span style="display:inline-block; width:10px; height:10px; background-color:lightcoral;"></span> DOD	<span style="display:inline-block; width:10px; height:10px; background-color:lightblue;"></span> NPS
<span style="display:inline-block; width:10px; height:10px; background-color:yellow;"></span> BLM	<span style="display:inline-block; width:10px; height:10px; background-color:lightgreen;"></span> DOE	<span style="display:inline-block; width:10px; height:10px; background-color:lightgrey;"></span> OTHER
<span style="display:inline-block; width:10px; height:10px; background-color:lightyellow;"></span> BOR	<span style="display:inline-block; width:10px; height:10px; background-color:lightcyan;"></span> FWS	<span style="display:inline-block; width:10px; height:10px; background-color:lightgreen;"></span> USFS

<span style="display:inline-block; width:10px; border-bottom:1px solid black;"></span> State Line	<span style="display:inline-block; width:10px; height:10px; border:1px dashed black;"></span> Existing Designated Corridor (See Note 2) (as of 6/5/2009)
<span style="display:inline-block; width:10px; border-bottom:1px solid black;"></span> County Boundary	<span style="display:inline-block; width:10px; height:10px; background-color:blue; border:1px solid black;"></span> Solar Energy Study Area (as of 6/5/2009)
	<span style="display:inline-block; width:10px; height:10px; background-color:lightblue; border:1px solid black;"></span> BLM Lands Being Analyzed for Solar Development in PEIS (as of 6/5/2009)

NOTE 1  
Revisions to the National Landscape Conservation System included in Public Law 111-11 are not yet reflected in this map.

NOTE 2  
Designated Corridors are developed for federal land use planning purposes only and are not applicable to state-owned or privately-owned land.

