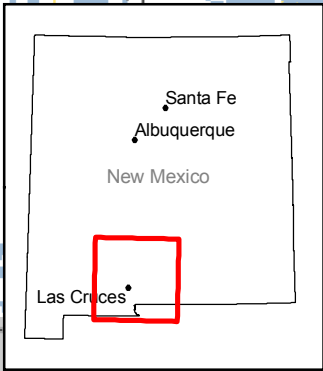
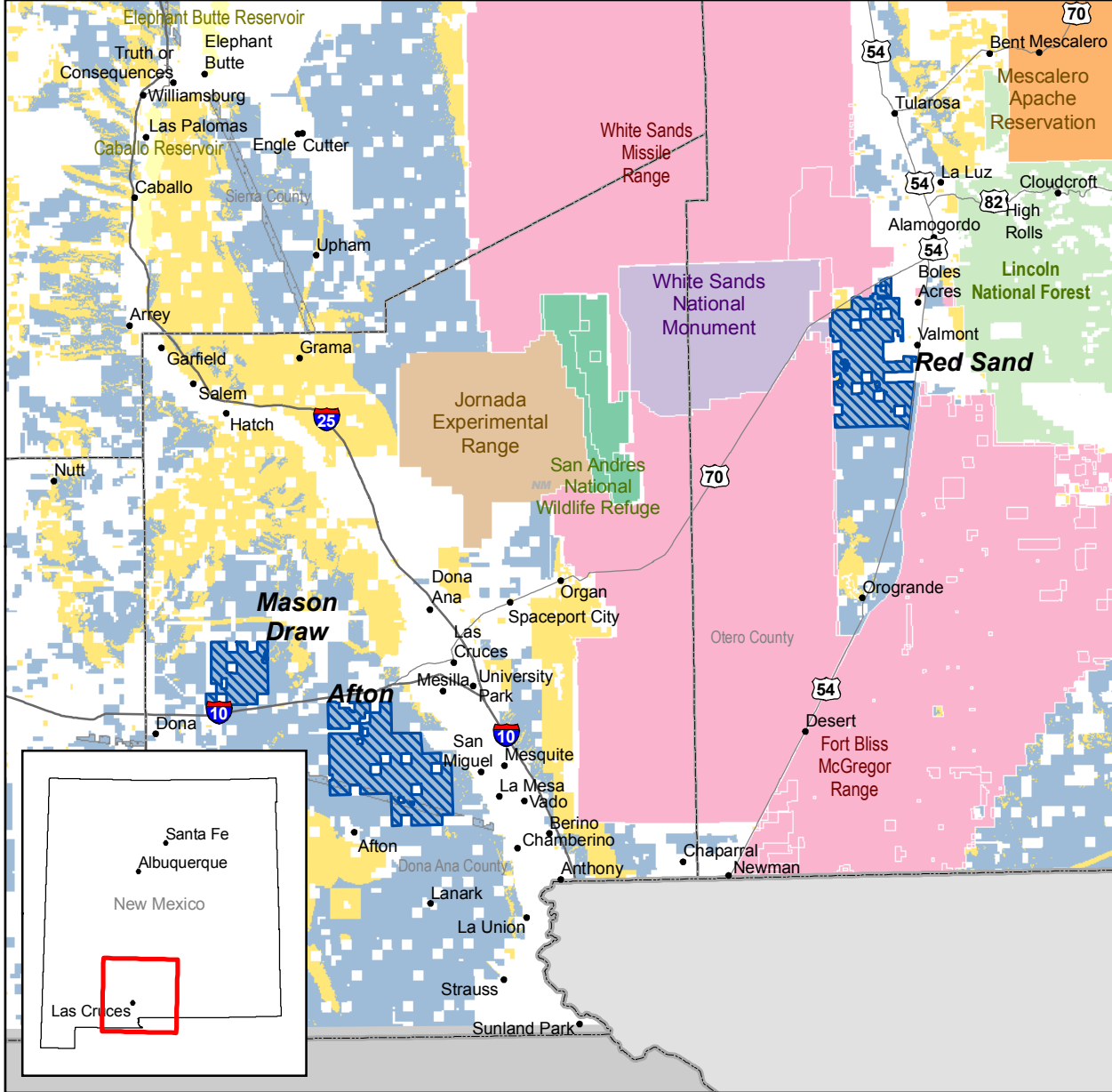


Solar Energy Study Areas in New Mexico

Map Prepared June 5, 2009



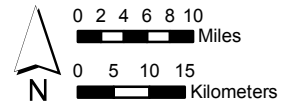
Property of the U.S. Departments of Energy and the Interior
for Use in Preparation of their Programmatic Environmental Impact Statement
to Develop and Implement Agency-Specific Programs for Solar Energy Development



Surface Management Agency
As of 3/26/2009

Tribal Lands	DOD	NPS
BLM	DOE	OTHER
BOR	FWS	USFS

- State Line
- County Boundary
- Solar Energy Study Area (As of 6/5/2009)
- Existing Designated Corridor (See Note 2) (As of 6/5/2009)
- BLM Lands Being Analyzed for Solar Development in PEIS (As of 6/5/2009)



NOTE 1: Revisions to the National Landscape Conservation System included in Public Law 111-11 are not yet reflected in this map.
NOTE 2: Designated Corridors are developed for federal land use planning purposes only and are not applicable to state-owned or privately-owned land. SOL141