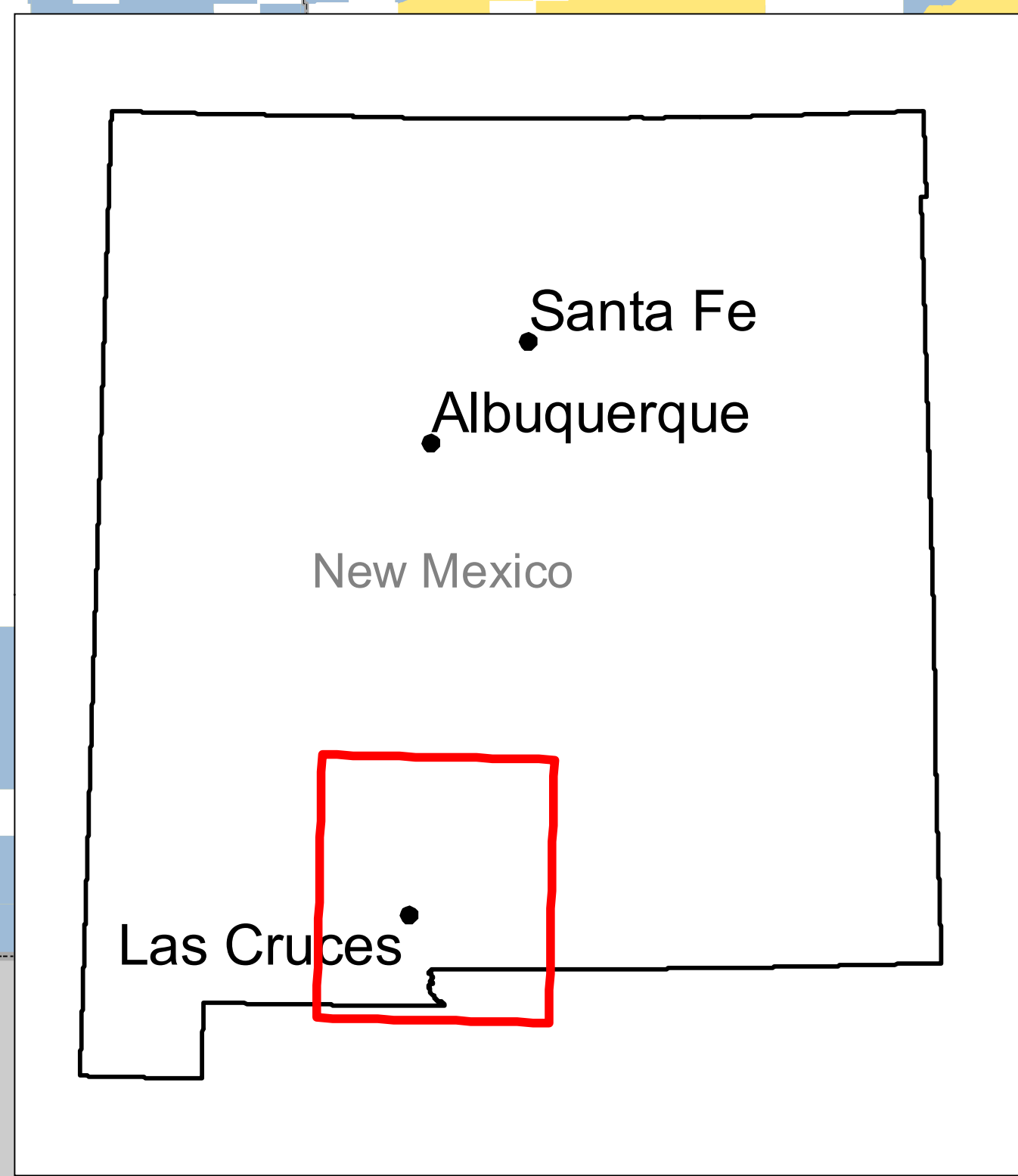
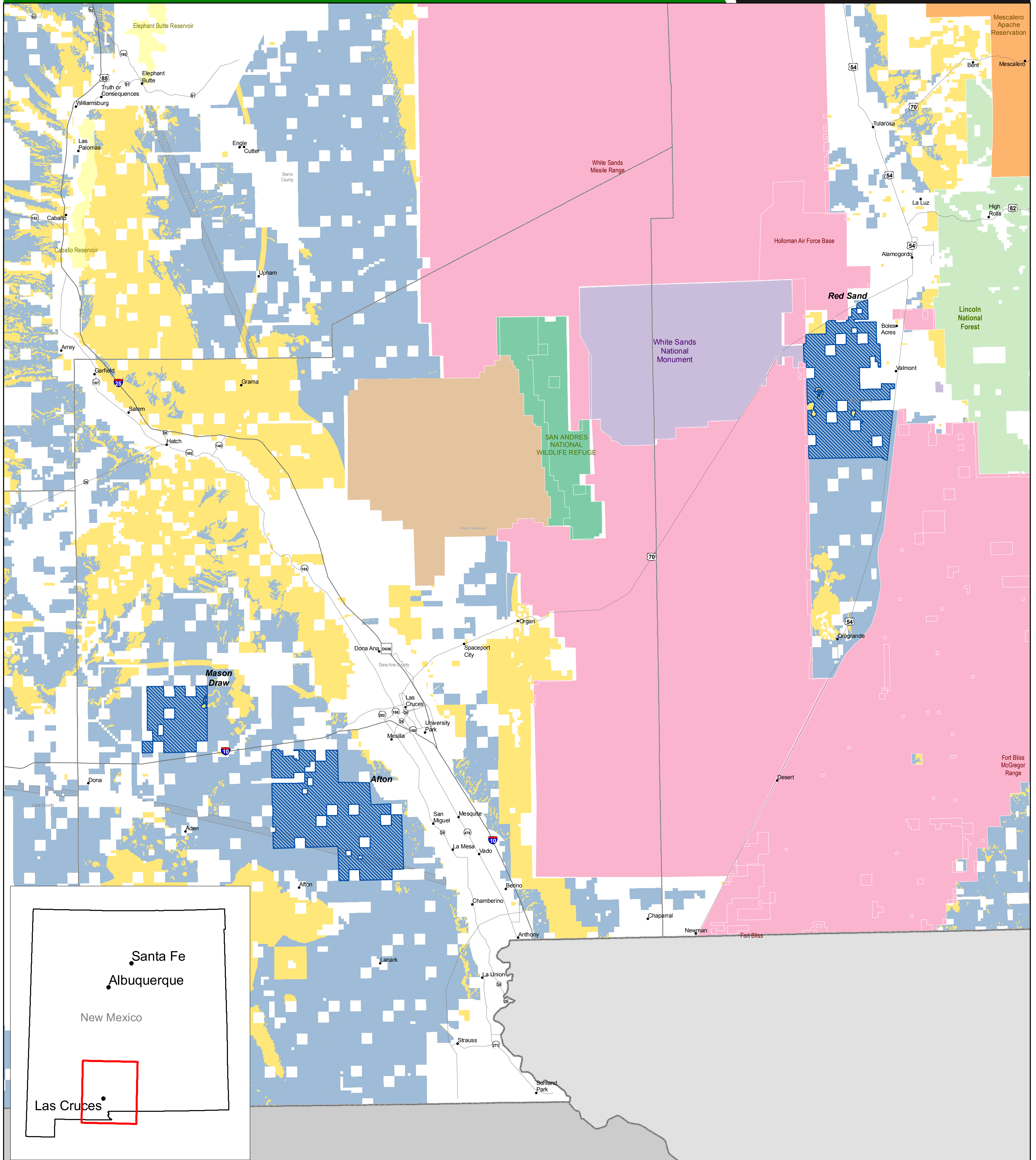


Solar Energy Study Areas in New Mexico

Map Prepared June 5, 2009

Property of the U.S. Departments of Energy and the Interior for Use in preparation of their Programmatic Environmental Impact Statement to Develop and Implement Agency-Specific Programs for Solar Energy Development



Surface Management Agency
As of 3/26/2009

Orange	Tribal Lands	Pink	DOD	Purple	NPS
Yellow	BLM	Brown	DOE	Light Green	OTHER
Light Yellow	BOR	Dark Green	FWS	Light Blue	USFS

Black line	State Line	Blue hatched	Existing Designated Corridor (See Note 2) (As of 6/5/2009)
Grey line	County Boundary	Blue hatched	Solar Energy Study Area (As of 6/5/2009)
Blue hatched		Blue hatched	BLM Lands Being Analyzed for Solar Development in PEIS (As of 6/5/2009)

NOTE 1
Revisions to the National Landscape Conservation System included in Public Law 111-11 are not yet reflected in this map.

NOTE 2
Designated Corridors are developed for federal land use planning purposes only and are not applicable to state-owned or privately-owned land.

