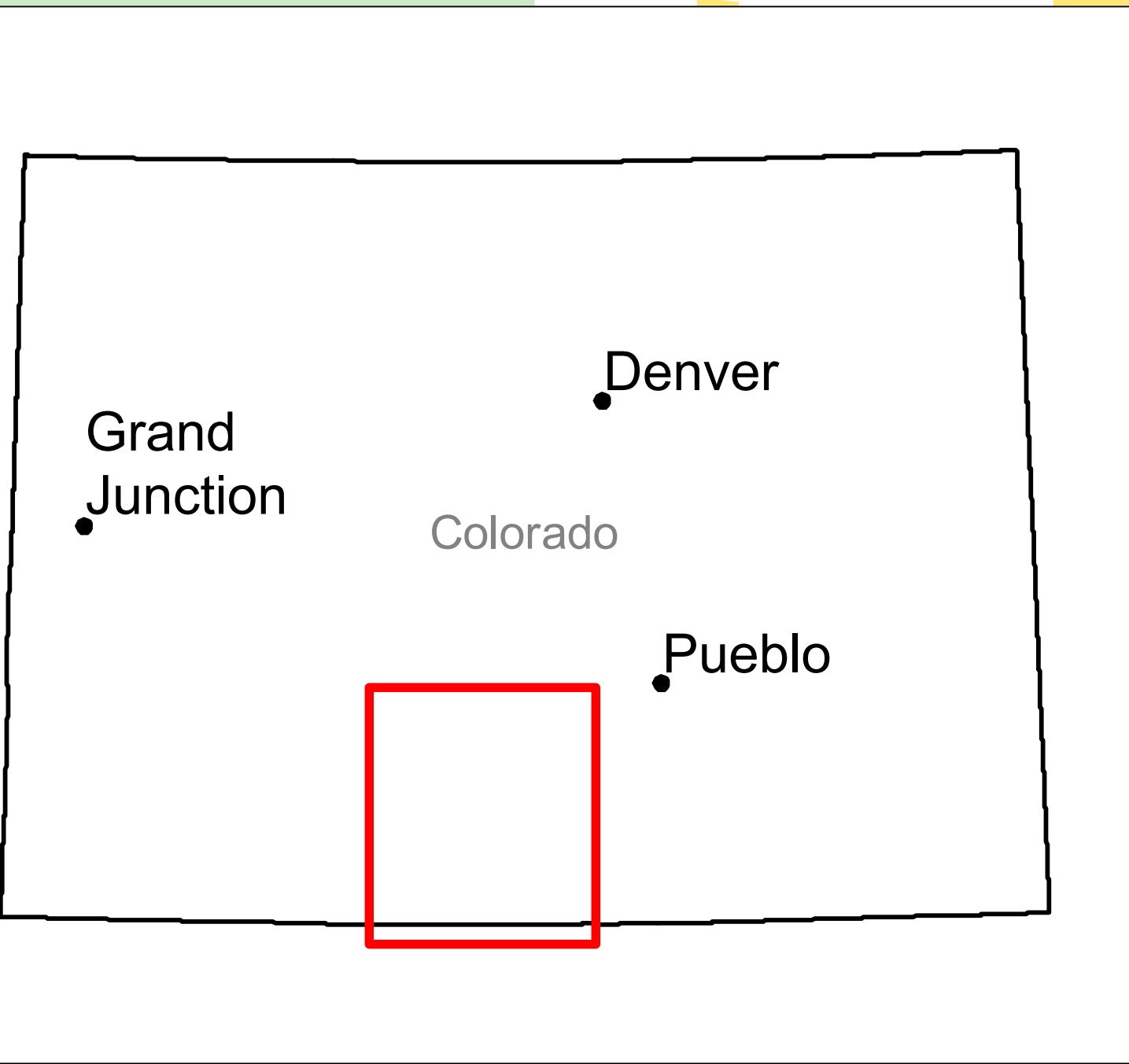
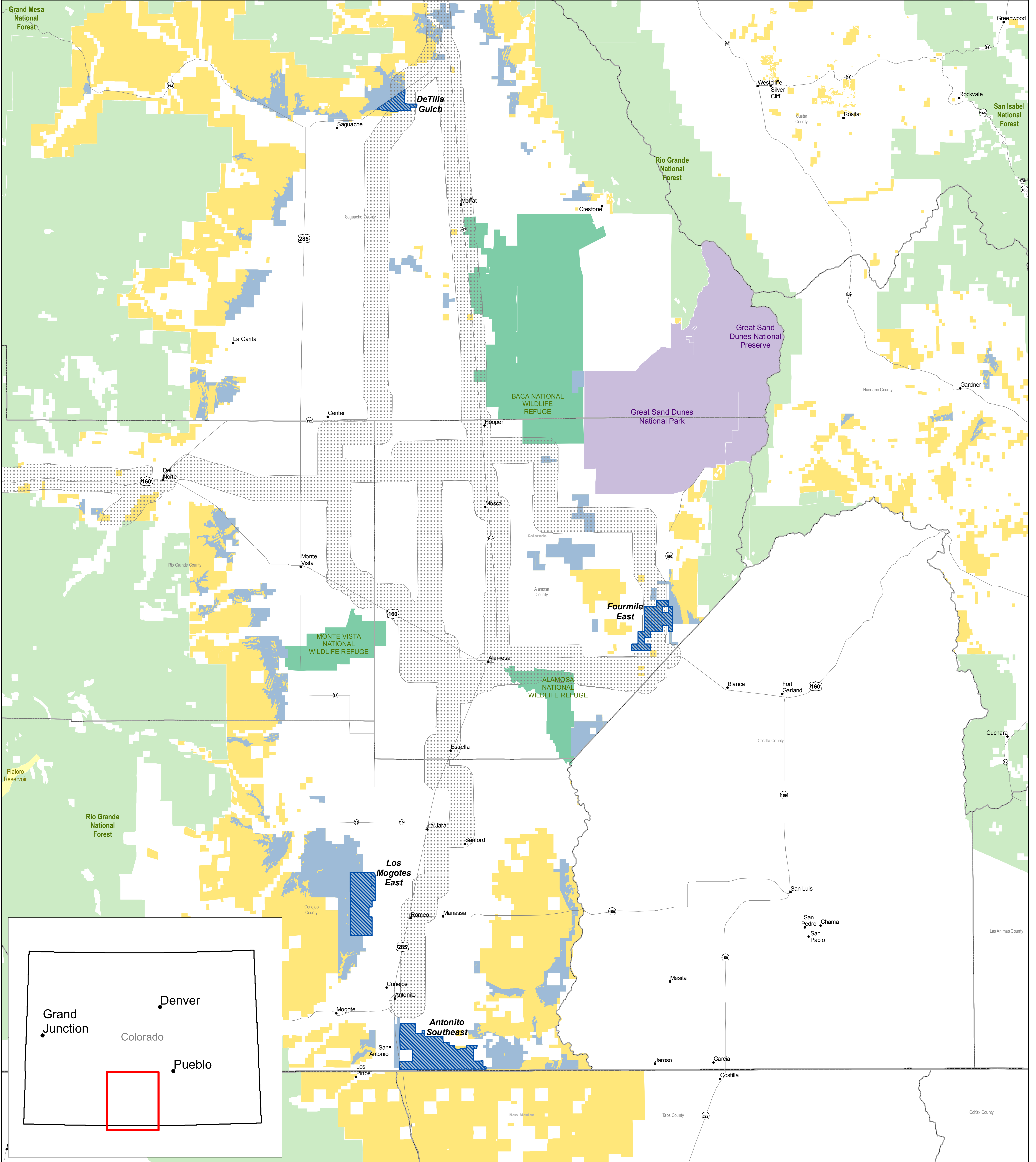


# Solar Energy Study Areas in Colorado

Map Prepared June 5, 2009

Property of the U.S. Departments of Energy and the Interior for Use in preparation of their Programmatic Environmental Impact Statement to Develop and Implement Agency-Specific Programs for Solar Energy Development



Surface Management Agency <small>As of 3/28/2009</small>			
Tribal Lands	DOD	NPS	
BLM	DOE	OTHER	
BOR	FWS	USFS	

State Line	Existing Designated Corridor (See Note 2) <small>(As of 6/5/2009)</small>
County Boundary	Solar Energy Study Area <small>(As of 6/5/2009)</small>
	BLM Lands Being Analyzed for Solar Development in PEIS <small>(As of 6/5/2009)</small>

**NOTE 1**  
Revisions to the National Landscape Conservation System included in Public Law 111-11 are not yet reflected in this map.

**NOTE 2**  
Designated Corridors are developed for federal land use planning purposes only and are not applicable to state-owned or privately-owned land.

