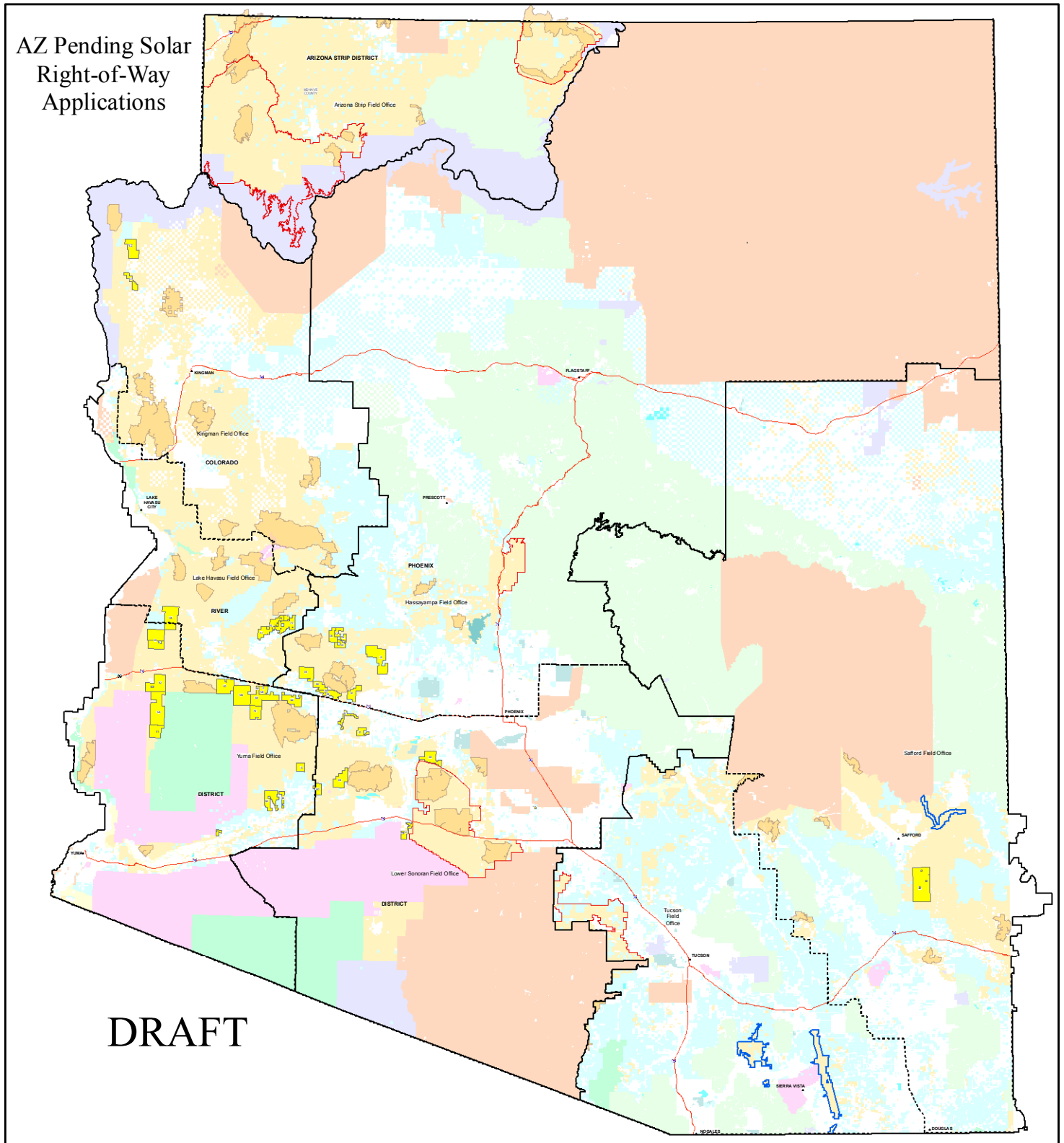


AZ Pending Solar Right-of-Way Applications



DRAFT

LEGEND

- Solar ROW Application
- Bureau of Land Management (BLM)
- BLM Wilderness Area
- National Forest Lands (USFS)
- Forest Service Wilderness Area
- National Park Service (NPS)
- USFWS Service, National Wildlife Refuges
- USFWS Service Wilderness Area
- Indian Lands or Reservations
- Bureau of Reclamation (BOR)
- Military Reservations/Corps of Engineers
- Private Lands
- State Lands
- State Wildlife Area
- City, State, County Parks
- County Lands
- BLM National Monument
- BLM National Conservation Area
- BLM Field Office Boundary
- BLM District Boundary



0 25 50 100 Miles

No warranty is made by the Bureau of Land Management for the use of the data for purposes not intended by the BLM.

Map updated September 18, 2009

CaseFile	Applicant	ID	Type	Acres	FieldOffice
AZA3878	ETA Engineering, Inc.	ET	Photovoltaic	161.78	Lower Sonoran FO
AZA3434	Boulevard Assoc. LLC	DL	CSP Through	754.30	Havasampa FO
AZA3436	Boulevard Assoc. LLC	DL	CSP Through	6271.49	Havasampa FO
AZA3437	Boulevard Assoc. LLC	DL	CSP Through	3275.43	Lower Sonoran FO
AZA3438	Boulevard Assoc. LLC - Mountain Spring	DL	CSP Through	6700.68	Kingman FO
AZA3439	Boulevard Assoc. LLC - Senter	DL	CSP Through	15275.79	Kingman FO
AZA3431	Aurora A2 LLC	A4	CSP Through	9859.47	Havasampa FO
AZA3433	Boulevard Assoc. LLC	DL	CSP Through	24297.34	Lake Havasu FO
AZA3437	Optisolar	LI	Photovoltaic	6383.15	Lower Sonoran FO
AZA3438	Optisolar	LI	Photovoltaic	6386.23	Lower Sonoran FO
AZA3435	Iberdrola	ML	CSP Through	30298.03	Yuma FO
AZA3434	Iberdrola	ML	CSP Through	13562.35	Havasampa FO
AZA3425	Iberdrola	ML	CSP Through	5764.64	Lower Sonoran FO
AZA3426	Iberdrola	ML	CSP Through	30298.03	Yuma FO
AZA3427	Iberdrola	ML	CSP Through	34638.36	Yuma FO
AZA3454	Horizon Wind	GL	CSP Through	12495.89	Havasampa FO
AZA3454	Next Light Renewable Power, LLC	KI	CSP Through	20777.41	Yuma FO
AZA3450	Next Light Renewable Power, LLC	KI	CSP Through	16441.89	Yuma FO
AZA3456	Next Light Renewable Power, LLC	K4	CSP Through	33445.04	Yuma FO
AZA3458	Next Light Renewable Power, LLC	K5	CSP Through	18986.87	Yuma FO
AZA3460	Solar Reserve	I1	CSP Tower	15038.09	Yuma FO
AZA3466	Solar Reserve	I2	CSP Tower	9862.52	Yuma FO
AZA3468	Solar Reserve	I3	CSP Tower	3688.38	Yuma FO
AZA3470	IQE Inc.	ML	CSP Through	12255.74	Yuma FO
AZA3474	Horizon Wind Energy, LLC	FI	Solar Monitoring	28228.31	Lake Havasu FO
AZA3474	Arizona Renewable Ventures, Inc.	FI	Photovoltaic	14813.13	Havasampa FO
AZA3479	LSR Jackrabbits, LLC	J1	CSP Tower	26776.50	Havasampa FO
AZA3479	LSR Jackrabbits, LLC	J2	CSP Through	6348.47	Lower Sonoran FO
AZA3484	Leopold Companies	H4	Power Tower	45502.58	Safford FO
AZA3477	Arizona Solar Investments	HF	CSP Through	13899.21	Havasampa FO
AZA3486	Solar Reserve	I1	CSP Tower	15038.09	Yuma FO
AZA3486	Willcat Quartrille LLC	P1	CSP Tower	12028.37	Yuma FO
AZA3494	Willcat Arizona LLC	P1	CSP Tower	1003.45	Yuma FO
AZA3496	Willcat Harcorer South LLC	P1	CSP Tower	2055.18	Lake Havasu FO
AZA3496	Willcat Harcorer South LLC	P1	CSP Tower	440.50	Lake Havasu FO
AZA3496	Willcat Harcorer South LLC	P1	CSP Tower	431.76	Lake Havasu FO
AZA3496	Willcat Harcorer South LLC	P1	CSP Tower	7451.73	Lake Havasu FO

NOTE: ACREAGES ARE APPROXIMATE AND INCLUDE APPROXIMATELY 28,050 ACRES OF OVERLAPPING APPLICATIONS. MONITORING SITES ARE NOT INCLUDED IN THIS TABLE.

TOTAL ACRES 494,283