

등록번호 2018-70ES-정0007

전 력 통 계 속 보

The Monthly Report on Major Electric Power Statistics

8

2018

제 478호



목 차

I. 통계도표	1. 주요 통계도표 및 요약 3
II. 발전 설비	2. 발전원별 12
	3. 발전회사별 14
	4. 에너지원별 20
	5. 행정구역별 21
	6. 발전소 건설현황 22
	III. 발전량
8. 발전회사별 26	
9. 에너지원별 32	
10. 행정구역별 33	
11. 연료사용량 34	
IV. 전력구입	12. 전력구입실적(종합) 38
	13. 발전원별 39
	14. 발전회사별 42
	15. 전력시장가격 및 구입단가 45
	16. PPA 46
	V. 전력판매
18. 계약종별 (판매량, 호수, 수입) 50	
19. 용도별 (판매량, 호수, 수입) 56	
20. 행정구역별 (판매량, 호수, 수입) 62	
21. 산업분류 및 행정구역별 70	
VI. 기타	22. 전력수급실적 78
	23. 인원 80

이용자를 위하여

1. 전력통계속보는 우리나라의 전력생산 및 공급에 관한 주요 실적을 대내외에 신속히 제공하기 위하여 매월 발행하는 통계자료이며, 잠정수치입니다
2. 통계수치는 세목과 총계(합계)가 각각 반올림되었으므로 세목의 합계가 총계와 일치하지 않는 경우도 있습니다.
3. 당월분이 미상[...]인 항목의 누계치는 전월까지의 누계치를 나타냅니다.
4. 전월호 수치와 일치되지 않는 것은 최근호에서 바로 잡은 것입니다.
5. 통계표에 사용된 부호의 뜻은 다음과 같습니다.
[-] : 해당사항 없음 [...] : 미 상
[p] : 잠정 (추후 확정치로 바뀜)
 ※ "기울임체" 또는 음영표시
[-] : 음수 (숫자 앞에 표시된 경우)
[r] : 정정
6. 문의사항은 한전 경영혁신처 출자관리부로 연락하여 주시기 바랍니다.
[문의처 : ☎ (061) 345-3326, 3327]

I. 통계도표

1. 주요 통계도표 및 요약

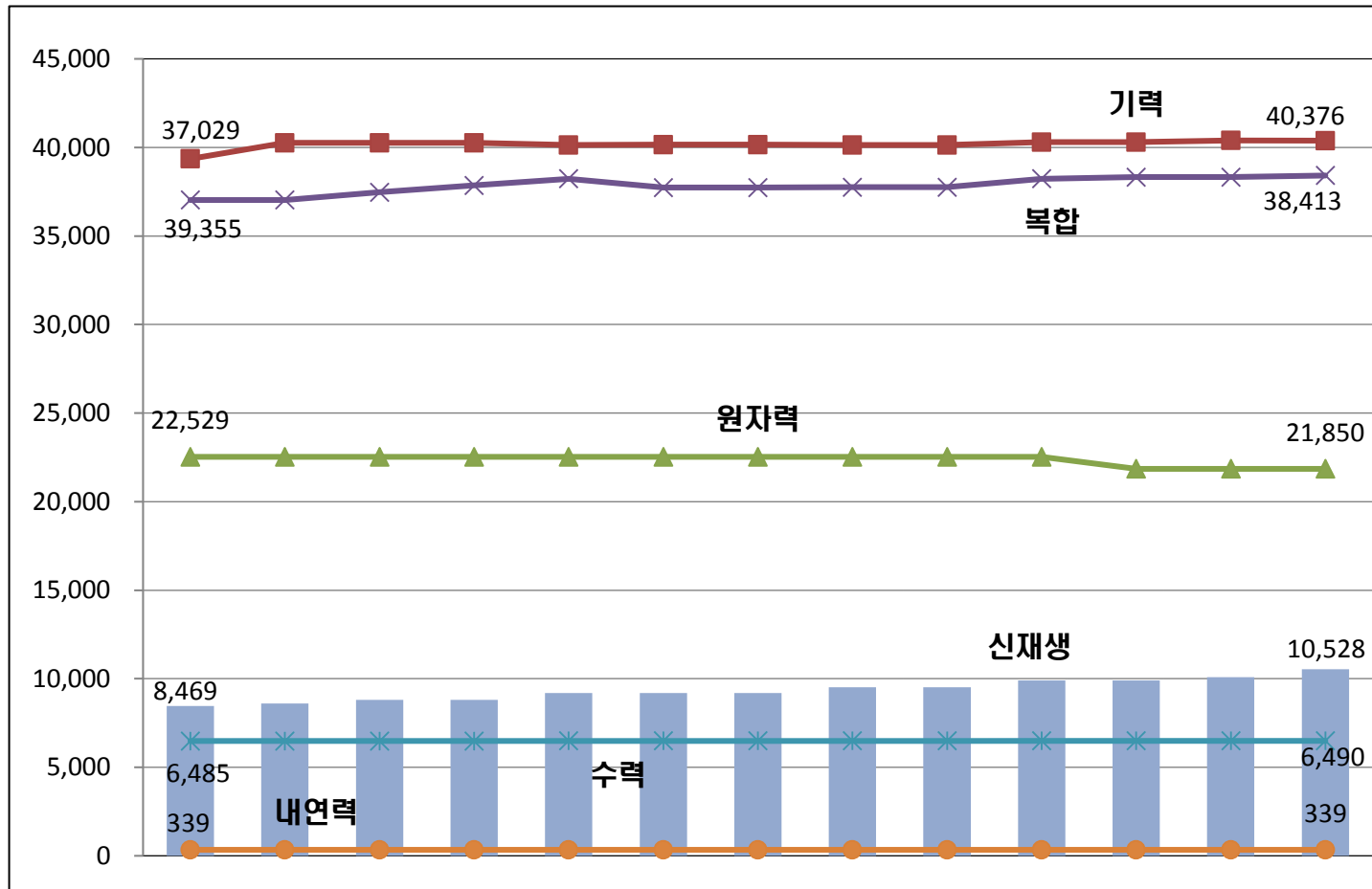
1. 주요통계도표

Graphics of Major Statistics

1-1 발전설비 추이 (발전원별)

Trend of Generating Capacity by Plant

(단위 : MW)



년 월	2017. 8	2017. 9	2017. 10	2017. 11	2017. 12	2018. 1	2018. 2	2018. 3	2018. 4	2018. 5	2018. 6	2018. 7	2018. 8
총발전설비	114,206	115,249	115,900	116,278	116,908	116,428	116,428	116,747	116,747	117,790	117,205	117,477	117,996
기 력	39,355	40,257	40,257	40,257	40,134	40,153	40,153	40,131	40,131	40,299	40,299	40,392	40,376
원자력	22,529	22,529	22,529	22,529	22,529	22,529	22,529	22,529	22,529	22,529	21,850	21,850	21,850
복 합	37,029	37,029	37,472	37,850	38,229	37,730	37,730	37,749	37,749	38,227	38,321	38,319	38,413
수 력	6,485	6,487	6,487	6,487	6,489	6,489	6,489	6,490	6,490	6,490	6,490	6,490	6,490
내연력	339	339	339	339	339	339	339	339	339	339	339	339	339
신재생	8,469	8,607	8,815	8,815	9,187	9,187	9,187	9,509	9,509	9,906	9,906	10,086	10,528

주1) 기력 : 무연탄, 유연탄, 중유, LNG, 집단

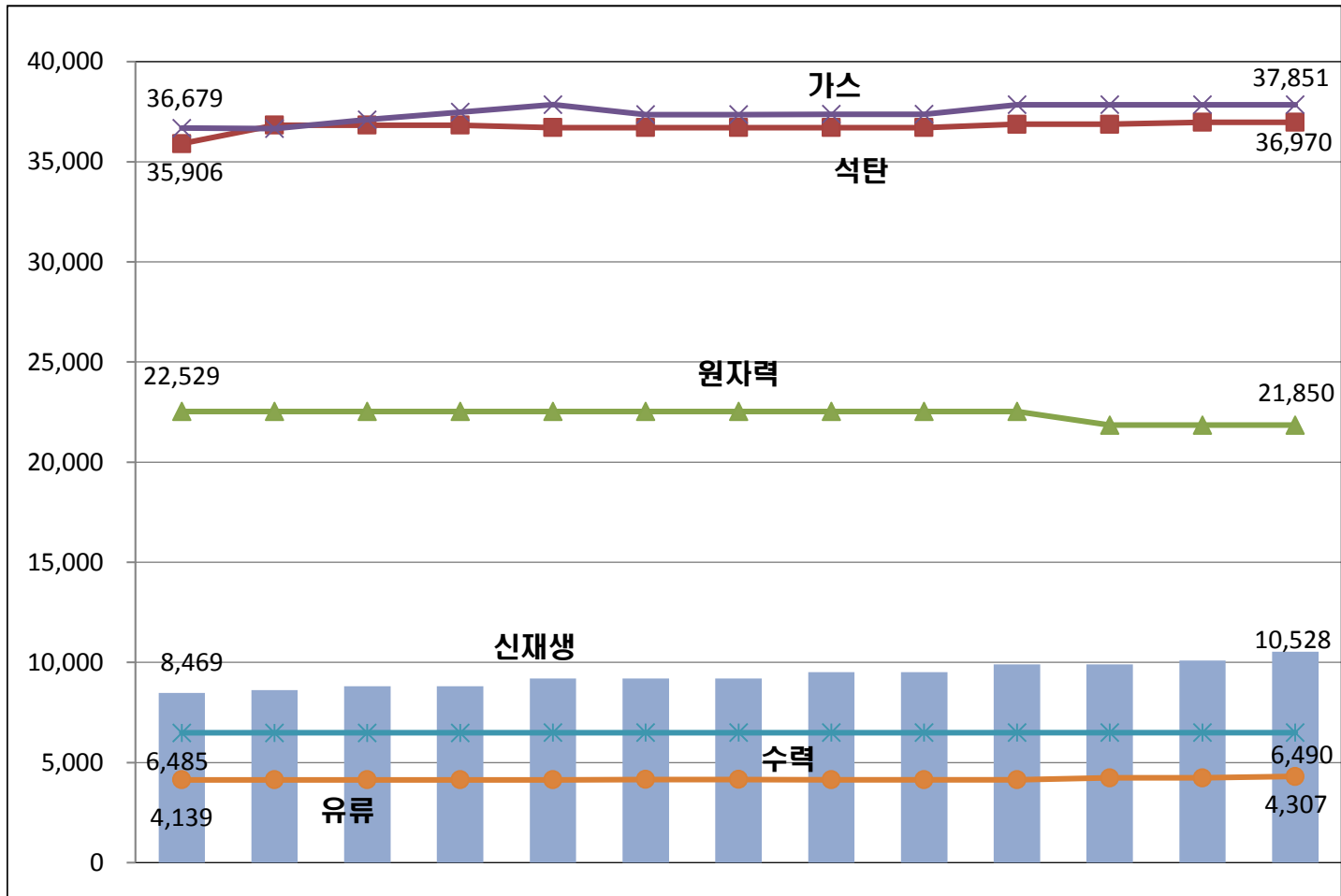
주2) 집단에너지 : 1개 이상의 집중된 에너지 생산시설(열병합시설, 자원회수시설 등)에서 생산된 에너지

주3) 대체에너지를 신재생에너지로 명칭변경(과거 데이터와 일관성 유지를 위해 수력은 별도 구분)

1-2 발전설비 추이 (에너지원별)

Trend of Generating Capacity by Source

(단위 : MW)



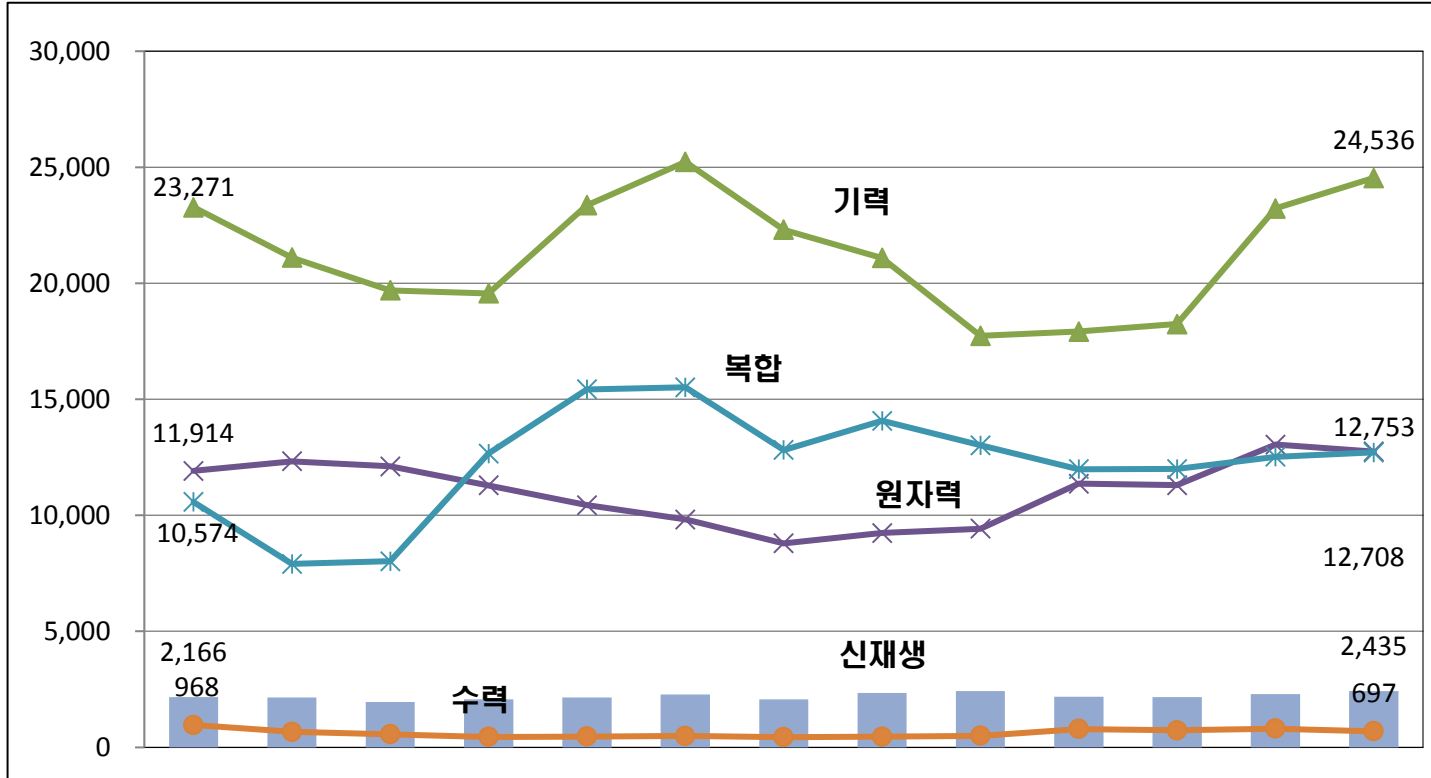
년 월	2017. 8	2017. 9	2017. 10	2017. 11	2017. 12	2018. 1	2018. 2	2018. 3	2018. 4	2018. 5	2018. 6	2018. 7	2018. 8
총발전설비	114,206	115,249	115,900	116,278	116,908	116,428	116,428	116,747	116,747	117,790	117,205	117,477	117,996
석 탄	35,906	36,832	36,832	36,832	36,709	36,709	36,709	36,709	36,709	36,877	36,877	36,970	36,970
원자력	22,529	22,529	22,529	22,529	22,529	22,529	22,529	22,529	22,529	22,529	22,529	21,850	21,850
가 스	36,679	36,655	37,097	37,476	37,854	37,358	37,358	37,374	37,374	37,853	37,853	37,851	37,851
수 력	6,485	6,487	6,487	6,487	6,489	6,489	6,489	6,490	6,490	6,490	6,490	6,490	6,490
유 류	4,139	4,139	4,139	4,139	4,139	4,155	4,155	4,136	4,136	4,136	4,230	4,230	4,307
신재생	8,469	8,607	8,815	8,815	9,187	9,187	9,187	9,509	9,509	9,906	9,906	10,086	10,528

주1) 2014년부터 집단에너지 에너지원별로 구분(유류→석탄,가스,유류)

1-3 발전전력량 추이 (발전원별)

Trend of Power Generation by Plant

(단위 : GWh, %)



년 월	2017. 8	2017. 9	2017. 10	2017. 11	2017. 12	2018. 1	2018. 2	2018. 3	2018. 4	2018. 5	2018. 6	2018. 7	2018. 8
총발전량	48,951	44,196	42,387	46,081	51,902	53,406	46,472	47,249	43,157	44,299	44,495	51,956	53,175
(증감률)	(6.9)	(-0.4)	(-0.7)	(3.5)	(5.4)	(7.6)	(1.9)	(0.3)	(2.6)	(3.3)	(2.3)	(4.6)	(8.6)
기 력	23,271	21,104	19,697	19,565	23,366	25,230	22,311	21,092	17,736	17,916	18,240	23,225	24,536
(증감률)	(13.4)	(10.3)	(8.4)	(0.8)	(1.0)	(9.6)	(8.6)	(2.1)	(-2.4)	(-3.3)	(0.3)	(2.2)	(5.4)
원자력	11,914	12,333	12,109	11,291	10,438	9,826	8,791	9,243	9,423	11,369	11,303	13,052	12,753
(증감률)	(-9.9)	(-18.7)	(3.9)	(9.5)	(-17.3)	(-25.0)	(-29.0)	(-29.8)	(-29.2)	(-16.8)	(-9.5)	(6.8)	(7.0)
복 합	10,574	7,910	8,019	12,666	15,429	15,519	12,813	14,071	13,022	11,992	11,996	12,522	12,708
(증감률)	(17.6)	(-2.7)	(-25.9)	(0.0)	(8.1)	(40.9)	(24.3)	(31.4)	(61.6)	(52.1)	(17.2)	(3.1)	(20.2)
수 력	968	674	567	451	468	490	440	463	498	791	732	808	697
(증감률)	(-29.6)	(38.8)	(19.7)	(2.5)	(-3.1)	(-8.9)	(-13.7)	(-8.0)	(-2.8)	(29.9)	(29.3)	(26.4)	(-28.0)
신재생	2,166	2,151	1,950	2,067	2,155	2,285	2,070	2,339	2,436	2,177	2,167	2,295	2,435
(증감률)	(18.4)	(40.7)	(19.7)	(24.1)	(22.2)	(20.5)	(14.6)	(14.3)	(18.7)	(2.5)	(10.1)	(22.9)	(12.4)

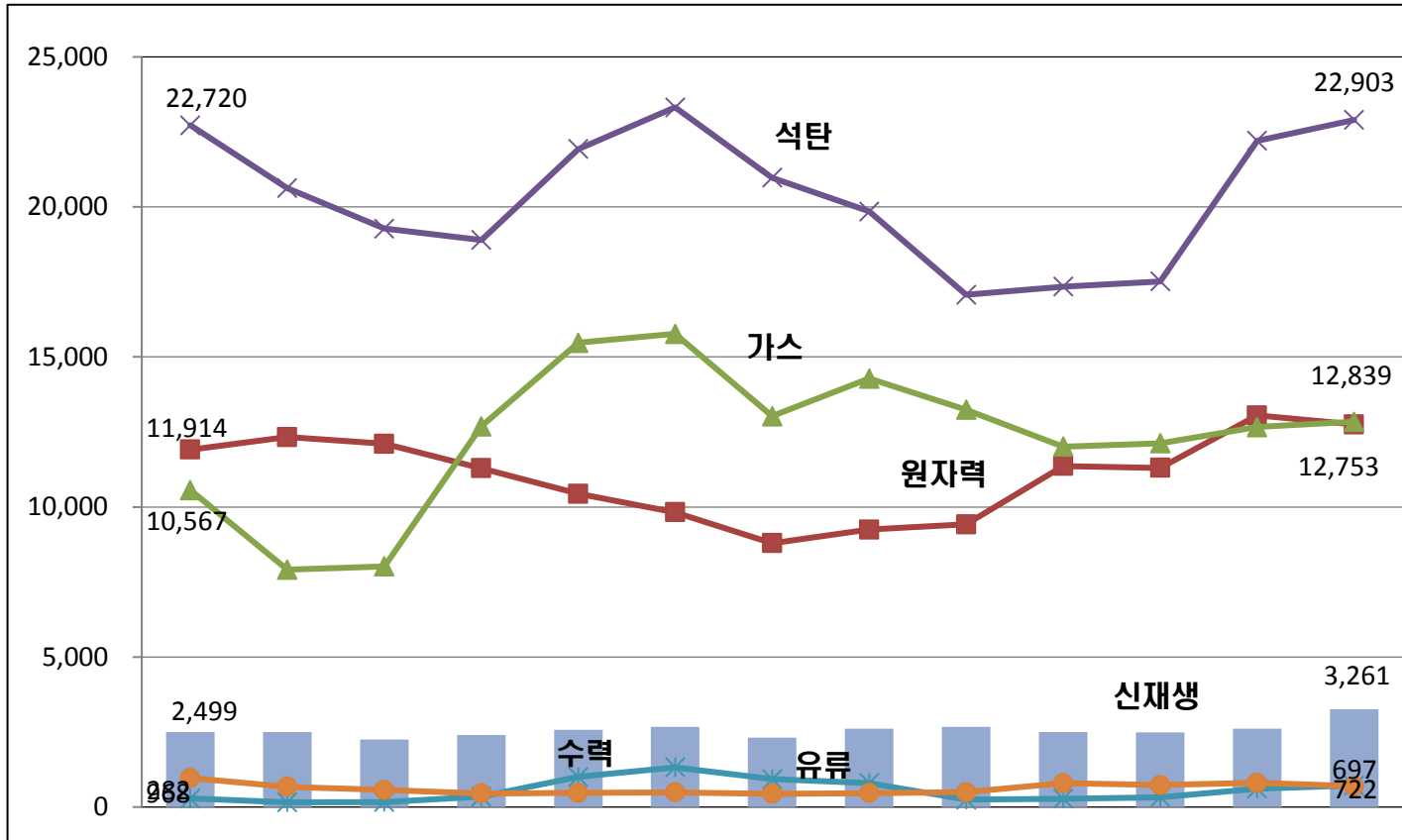
주1) ()내는 전년 동월대비 증감률

주2) 복합발전 : 1차 가스터빈, 2차 증기터빈(or 열공급) 발전형식

1-4 발전전력량 추이 (에너지원별)

Trend of Power Generation by Source

(단위 : GWh, %)



년 월	2017. 8	2017. 9	2017. 10	2017. 11	2017. 12	2018. 1	2018. 2	2018. 3	2018. 4	2018. 5	2018. 6	2018. 7	2018. 8
총발전량	48,951	44,196	42,387	46,081	51,902	53,406	46,472	47,249	43,157	44,299	44,495	51,956	53,175
(증감률)	(-0.4)	(5.5)	(-0.7)	(3.5)	(5.4)	(7.6)	(1.9)	(0.3)	(2.6)	(3.3)	(2.3)	(4.6)	(8.6)
원자력	11,914	12,333	12,109	11,291	10,438	9,826	8,791	9,243	9,423	11,369	11,303	13,052	12,753
(증감률)	(-18.7)	(-2.8)	(3.9)	(9.5)	(-17.3)	(-25.0)	(-29.0)	(-29.8)	(-29.2)	(-16.8)	(-9.5)	(6.8)	(7.0)
석탄	22,720	20,627	19,275	18,900	21,935	23,320	20,973	19,852	17,074	17,344	17,522	22,206	22,903
(증감률)	(14.2)	(21.5)	(13.4)	(3.7)	(3.6)	(10.5)	(10.7)	(-0.1)	(-7.8)	(-9.5)	(-0.9)	(0.9)	(0.8)
가스	10,567	7,911	8,021	12,690	15,478	15,773	13,026	14,279	13,244	12,011	12,123	12,662	12,839
(증감률)	(-9.0)	(-20.8)	(-30.7)	(-6.7)	(24.5)	(46.2)	(29.0)	(38.5)	(71.5)	(60.1)	(24.0)	(4.3)	(21.5)
유류	282	158	163	345	1,005	1,321	933	801	244	279	326	612	722
(증감률)	(-44.0)	(-37.0)	(-65.9)	(-34.6)	(-1.4)	(-29.8)	(-37.6)	(-13.2)	(-71.6)	(-62.9)	(-53.5)	(30.2)	(155.9)
수력	968	674	567	451	468	490	440	463	498	791	732	808	697
(증감률)	(38.8)	(7.2)	(19.7)	(2.5)	(-3.1)	(-8.9)	(-13.7)	(-8.0)	(-2.8)	(29.9)	(29.3)	(26.4)	(-28.0)
신재생	2,499	2,494	2,251	2,402	2,579	2,676	2,308	2,611	2,674	2,505	2,488	2,617	3,261
(증감률)	(36.6)	(59.4)	(41.8)	(53.5)	(59.9)	(20.6)	(5.4)	(13.3)	(58.8)	(51.5)	(10.0)	(20.0)	(30.5)

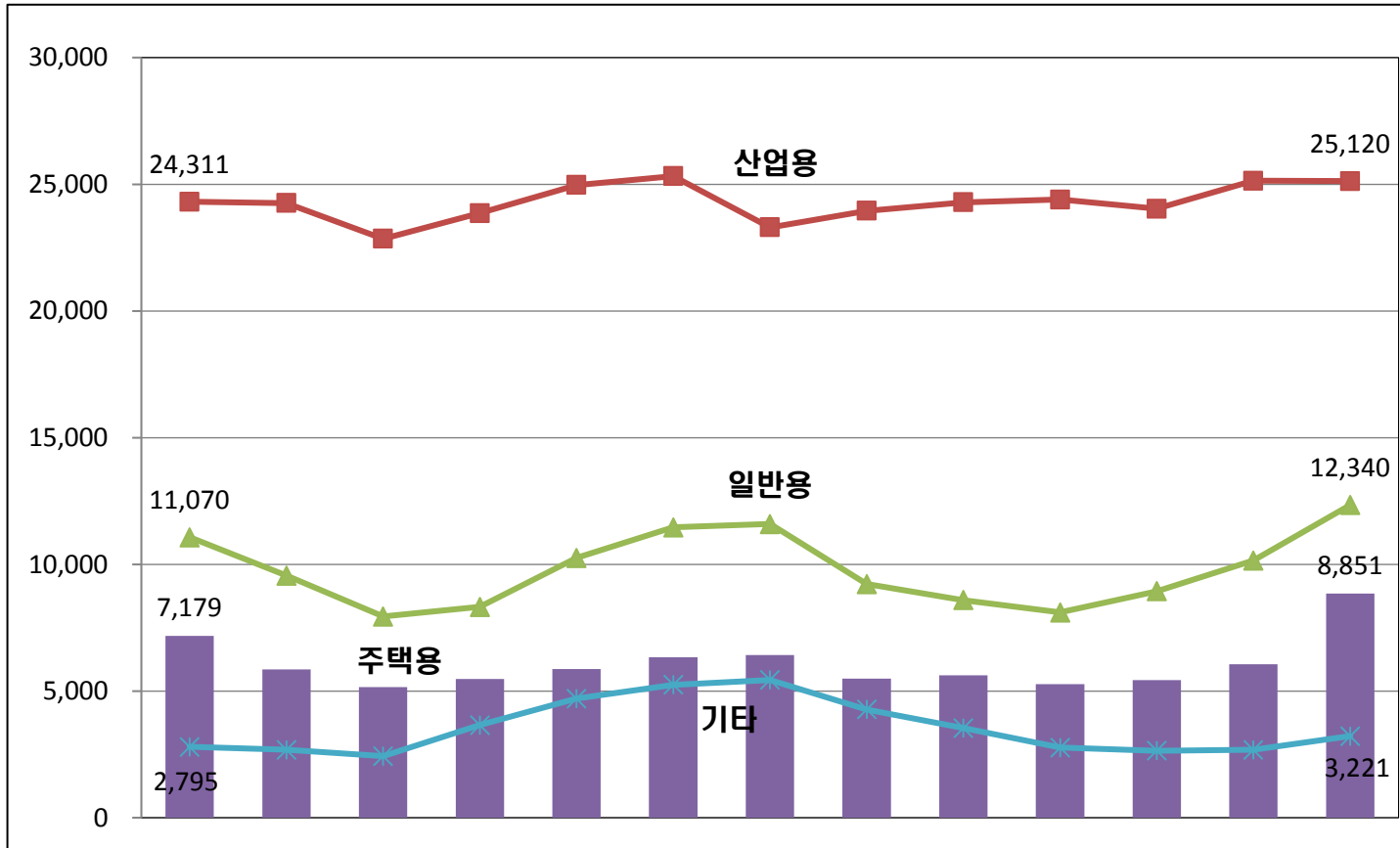
주1) ()내는 전년 동월대비 증감률

주2) 2014년부터 집단에너지 에너지원별로 구분(유류→석탄,가스,유류)

1-5 판매전력량 추이 (계약종별)

Trend of Power Sold by Segments

(단위 : GWh, %)



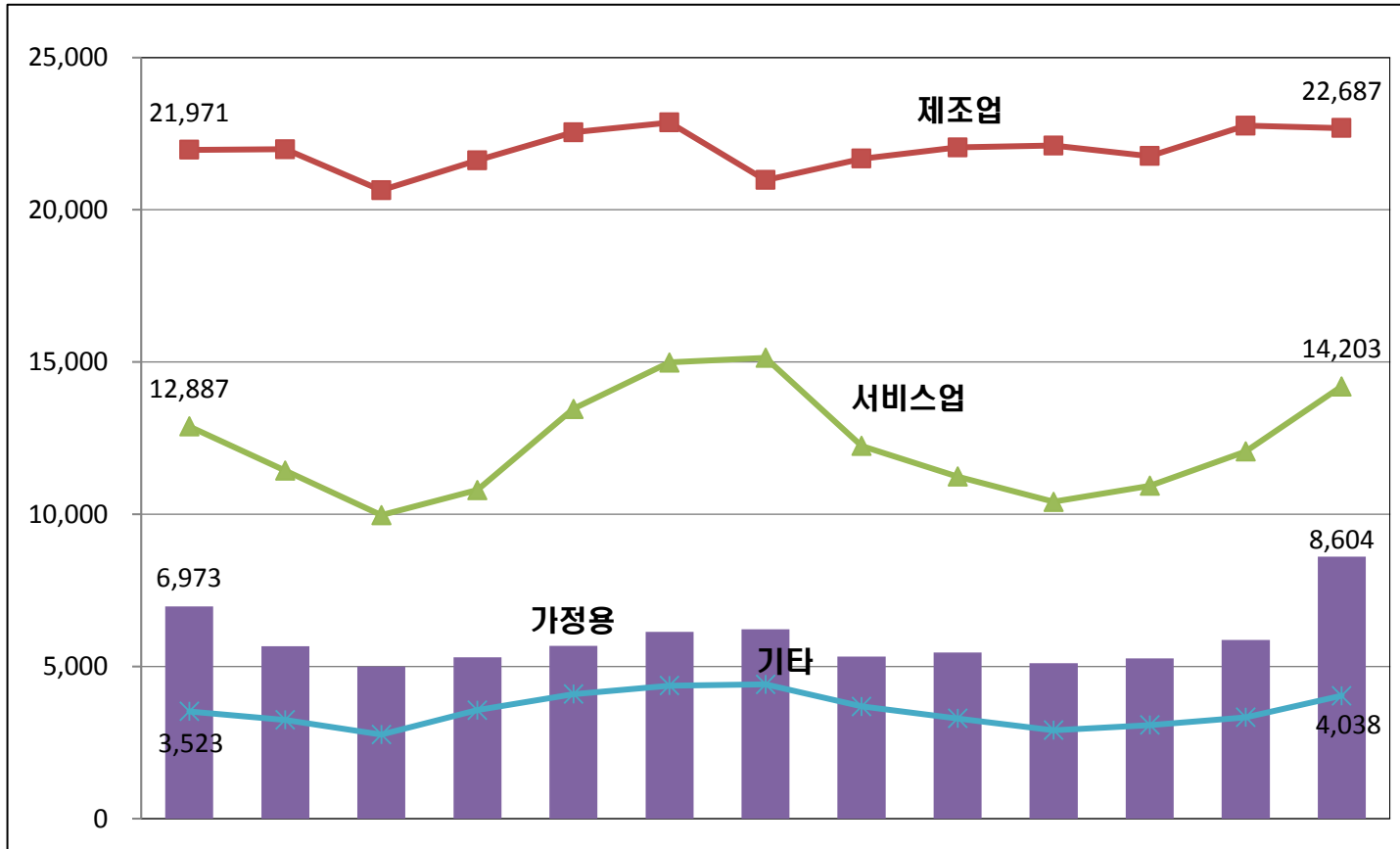
년 월	2017. 8	2017. 9	2017. 10	2017. 11	2017. 12	2018. 1	2018. 2	2018. 3	2018. 4	2018. 5	2018. 6	2018. 7	2018. 8
총판매량	45,354	42,336	38,369	41,293	45,781	48,362	46,750	42,936	42,033	40,531	41,046	44,030	49,532
(증감률)	(2.1)	(2.7)	(-0.5)	(2.6)	(5.2)	(7)	(5.2)	(0.9)	(3)	(4.6)	(3.5)	(1.9)	(9.2)
산업용	24,311	24,260	22,846	23,856	24,967	25,319	23,300	23,951	24,287	24,394	24,035	25,139	25,120
(증감률)	(3.7)	(7.0)	(-1.1)	(3.1)	(2.7)	(4.9)	(2)	(-0.5)	(4.3)	(4.9)	(2.6)	(1.7)	(3.3)
일반용	11,070	9,553	7,943	8,318	10,253	11,461	11,592	9,222	8,590	8,100	8,937	10,149	12,340
(증감률)	(1)	(-0.6)	(-0.0)	(2.3)	(10.3)	(11.6)	(11.1)	(3)	(2.9)	(4.7)	(5.6)	(2)	(11.5)
주택용	7,179	5,845	5,150	5,467	5,861	6,333	6,424	5,494	5,622	5,267	5,432	6,058	8,851
(증감률)	(0.14)	(-5.1)	(1.1)	(1.3)	(4.6)	(5.7)	(5.6)	(4.3)	(2)	(3.4)	(4.8)	(2.5)	(23.3)
기 타	2,795	2,678	2,430	3,652	4,699	5,248	5,434	4,269	3,534	2,769	2,641	2,684	3,221
(증감률)	(-1.4)	(-2.5)	(0.7)	(1.7)	(8.9)	(9.5)	(7.1)	(0.5)	(-3.5)	(3.7)	(1.7)	(1.9)	(15.3)

주1) 기타 : 교육용, 농사용, 가로등, 심야

1-6 판매전력량 추이 (용도별)

Trend of Power Sold by Uses

(단위 : GWh, %)



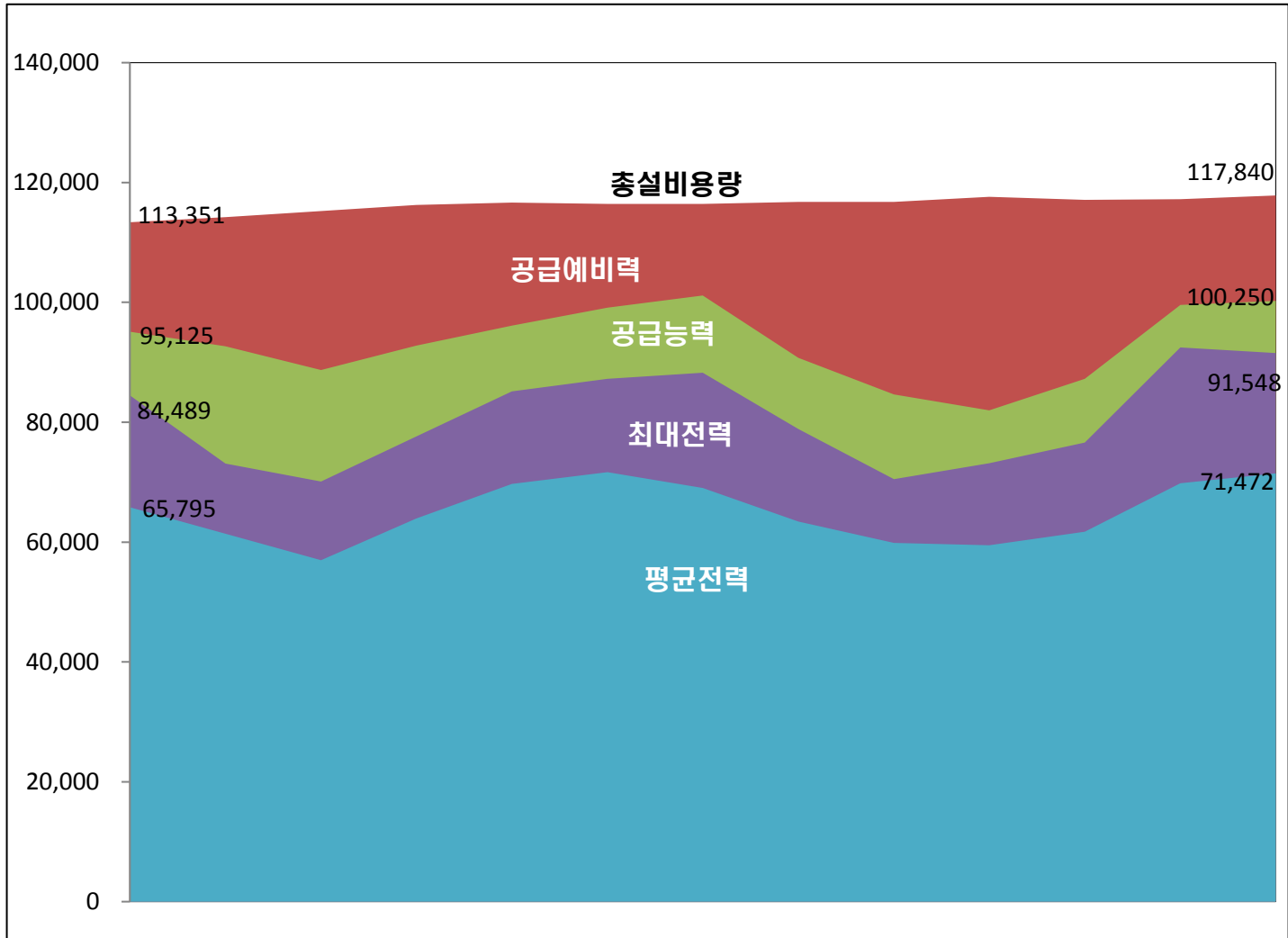
년 월	2017. 8	2017. 9	2017. 10	2017. 11	2017. 12	2018. 1	2018. 2	2018. 3	2018. 4	2018. 5	2018. 6	2018. 7	2018. 8
총판매량	45,354	42,336	38,369	41,293	45,781	48,362	46,750	42,936	42,033	40,531	41,046	44,030	49,532
(증감률)	(2.1)	(2.7)	(-0.5)	(2.6)	(5.2)	(7.0)	(5.2)	(0.9)	(3.0)	(4.6)	(3.5)	(1.9)	(9.2)
제조업	21,971	21,991	20,642	21,629	22,545	22,866	20,979	21,682	22,047	22,110	21,767	22,765	22,687
(증감률)	(3.8)	(7.1)	(-1.7)	(2.9)	(2.4)	(4.8)	(1.7)	(-1.1)	(4.2)	(4.9)	(2.9)	(1.7)	(3.3)
서비스업	12,887	11,433	9,970	10,795	13,461	14,989	15,138	12,242	11,237	10,408	10,936	12,062	14,203
(증감률)	(1.4)	(0.7)	(1.3)	(2.3)	(9.1)	(10.1)	(9.3)	(3)	(2.2)	(5.2)	(5.7)	(2.1)	(10.2)
가정용	6,973	5,665	4,994	5,302	5,679	6,136	6,221	5,326	5,453	5,109	5,265	5,872	8,604
(증감률)	(0)	(-5.4)	(0.9)	(1.0)	(4.2)	(5.5)	(5.3)	(4.1)	(1.9)	(3.2)	(4.7)	(2.4)	(23.4)
기 타	3,523	3,247	2,762	3,567	4,095	4,371	4,412	3,687	3,295	2,903	3,077	3,331	4,038
(증감률)	(-1.0)	(-2.7)	(0.3)	(3.7)	(10.2)	(10.8)	(9.4)	(1.3)	(-0.3)	(3.3)	(-2.0)	(2)	(14.6)

주1) 기타 : 공공용, 농수산업, 광업

1-7 전력수급 추이

Trend of Power Supply & Demand

(단위 : MW)



년 월	2017. 8	2017. 9	2017. 10	2017. 11	2017. 12	2018. 1	2018. 2	2018. 3	2018. 4	2018. 5	2018. 6	2018. 7	2018. 8
총설비용량	113,351	114,206	115,249	116,278	116,657	116,428	116,428	116,747	116,747	117,589	117,111	117,205	117,840
공급능력	95,125	92,665	88,736	92,807	96,095	99,147	101,148	90,761	84,634	82,000	87,256	99,570	100,250
최대전력	84,489	73,115	70,113	77,605	85,133	87,247	88,238	78,855	70,520	73,173	76,606	92,478	91,548
평균전력	65,795	61,383	56,970	63,957	69,720	71,668	69,017	63,436	59,860	59,466	61,725	69,834	71,472
공급예비력	10,636	19,550	18,623	15,202	10,962	11,900	12,910	11,906	14,114	8,827	10,650	7,092	8,702
공급예비율	12.6	26.7	26.6	19.6	12.9	13.6	14.6	15.1	20.0	12.1	13.9	7.7	9.5

주1) 최대전력 발생시점 기준 (단, 평균전력은 월간실적) [평균전력 = 총발전량 / (역일수×24)]

1-8 월간실적요약 (잠정)

Summary of Monthly Performance

구 분		전 년 동 월 대 비				전 년 동 기 대 비			
		2017. 8	2018. 8	증 감	증감률	2017. 1~8	2018. 1~8	증 감	증감률
발전설비	MW	114,206	117,996	3,790	3.3%	114,206	117,996	3,790	3.3%
발 전 량	GWh	48,951	53,175	4,224	8.6%	368,965	384,208	15,243	4.1%
구 입 량	GWh	46,731	50,891	4,160	8.9%	354,208	370,287	16,078	4.5%
구입단가	원/kWh	82.0	91.1	9.1	11.1%	85.7	92.7	7.0	8.2%
판 매 량	GWh	45,354	49,532	4,178.4	9.2%	339,968	355,219	15,251	4.5%
판매단가	원/kWh	122.9	120.7	- 2.1	-1.7%	110.7	110.1	- 0.6	-0.5%

최대전력	MW	84,489	91,548	7,059	8.4%	84,586	92,478	7,892	9.3%
평균전력	MW	65,795	71,472	5,677	8.6%	63,266	65,811	2,546	4.0%
예비율	%	12.6	9.5	- 3.1	-24.5%	12.3	7.7	- 4.6	-37.6%
부하율	%	77.9	78.1	0.2	0.3%	74.8	71.2	- 3.6	-4.9%
이용률	%	58.0	60.6	2.5	4.4%	55.4	55.8	0.4	0.7%
고객호수	천호	22,841	23,298	457	2.0%	22,841	23,298	457	2.0%

※ 발전원별 구입단가

발전원		원자력	유연탄	무연탄	유 류	LNG 복합	수 력	양 수	신재생 기타
당월	원/KWh	61.85	80.51	102.14	188.54	126.91	114.95	127.87	106.90
누계	원/KWh	61.88	87.27	103.47	161.48	118.89	105.84	124.58	99.51

주1) RPS 제외분임

주2) 기타 : 포항제철, 동양제철화학, 광양제철, LG석유여수, 대한유화열병합등

Ⅱ. 발전설비

2. 발전원별
3. 발전회사별
4. 에너지원별
5. 행정구역별
6. 발전소 건설현황

2. 발전원별 발전설비용량 Generating Capacity

구 분	발 전 자 회 사 및 한 전(도서)											타		
	수 력	기 력					복 합	내 연	원자력	신재생	계	수 력	기 력	
		무연탄	유연탄	유류	L N G	소 계							유연탄	유류
2008	4,450	1,125	22,580	4,525	1,538	29,768	11,289	307	17,716	-	63,529	1,055	-	2,151
2009	4,457	1,125	23,080	4,530	888	29,623	11,820	347	17,716	-	63,962	1,057	-	2,695
2010	4,462	1,125	23,080	4,552	888	29,645	13,386	351	17,716	-	65,560	1,062	-	3,742
2011	5,327	1,125	23,080	4,576	888	29,669	12,936	355	18,716	-	67,003	1,091	-	4,384
2012	5,331	1,125	23,409	3,950	888	29,371	12,936	367	20,716	127	68,848	1,115	-	2,768
2013	5,334	1,125	23,409	3,950	888	29,371	14,886	330	20,716	208	70,845	1,120	-	3,106
2014	5,343	1,125	25,149	2,950	388	29,611	16,074	330	20,716	231	72,305	1,124	-	3,791
2015	5,345	1,125	25,149	2,950	388	29,611	16,018	330	21,716	263	73,282	1,126	-	4,830
2016	5,350	1,125	29,421	2,950	250	33,746	16,018	329	23,116	658	79,217	1,135	1,489	279
2017	5,351	600	33,525	2,950	250	37,325	16,018	339	22,529	820	82,382	1,138	2,585	279
2017.08	5,349	600	32,599	2,950	-	36,149	16,018	339	22,529	807	81,190	1,136	2,708	279
2017.09	5,351	600	33,525	2,950	-	37,075	16,018	339	22,529	808	82,121	1,136	2,708	279
2017.10	5,351	600	33,525	2,950	-	37,075	16,018	339	22,529	808	82,121	1,136	2,708	279
2017.11	5,351	600	33,525	2,950	-	37,075	16,018	339	22,529	808	82,121	1,136	2,708	279
2017.12	5,351	600	33,525	2,950	-	37,075	16,018	339	22,529	820	82,132	1,138	2,585	279
2018.01	5,351	600	33,525	2,950	-	37,075	15,538	339	22,529	820	81,652	1,138	2,585	295
2018.02	5,351	600	33,525	2,950	-	37,075	15,538	339	22,529	820	81,652	1,138	2,585	295
2018.03	5,351	600	33,525	2,950	-	37,075	15,538	339	22,529	845	81,677	1,138	2,585	276
2018.04	5,351	600	33,525	2,950	-	37,075	15,538	339	22,529	845	81,677	1,138	2,585	276
2018.05	5,351	600	33,525	2,950	-	37,075	15,538	339	22,529	875	81,707	1,138	2,753	276
2018.06	5,351	600	33,525	2,950	-	37,075	15,632	339	21,850	875	81,122	1,138	2,753	276
2018.07	5,351	600	33,618	2,950	-	37,168	15,632	339	21,850	896	81,237	1,138	2,753	276
2018.08	5,351	600	33,618	2,950	-	37,168	15,726	339	21,850	896	81,330	1,138	2,753	259

주1) 2012. 6월부터 신재생 발전설비 분리수록

주2) 2016년부터 타사 기력 발전원별 구분 수록

(단위 : MW)

사				합 계										
L N G	복합	신재생	계	수 력	기 력					복합	내 연	원자력	신재생	계
					무연탄	유연탄	중 유	LNG	계					
-	5,755	-	8,961	5,505	1,125	22,580	6,677	1,538	31,919	17,044	307	17,716	-	72,491
-	5,755	-	9,507	5,515	1,125	23,080	7,225	888	32,317	17,575	347	17,716	-	73,470
-	5,714	-	10,518	5,525	1,125	23,080	8,294	888	33,386	19,100	351	17,716	-	76,078
-	6,863	-	12,339	6,418	1,125	23,080	8,960	888	34,053	19,799	355	18,716	-	79,342
-	6,863	2,211	12,957	6,446	1,125	23,409	6,718	888	32,139	19,799	367	20,716	2,338	81,806
-	8,587	3,311	16,124	6,454	1,125	23,409	7,056	888	32,477	23,473	330	20,716	3,519	86,969
-	11,753	4,242	20,911	6,468	1,125	25,149	6,741	388	33,402	27,826	330	20,716	4,474	93,216
-	13,024	5,387	24,367	6,471	1,125	25,149	7,780	388	34,441	29,043	330	21,716	5,649	97,649
242	16,684	6,820	26,649	6,485	1,125	30,910	3,229	492	35,756	32,703	329	23,116	7,477	105,866
196	22,210	8,367	34,775	6,489	600	36,109	3,229	446	40,384	38,229	339	22,529	9,187	117,158
220	21,011	7,662	33,015	6,485	600	35,306	3,229	220	39,355	37,029	339	22,529	8,469	114,206
196	21,011	7,799	33,128	6,487	600	36,232	3,229	196	40,257	37,029	339	22,529	8,607	115,249
196	21,454	8,007	33,779	6,487	600	36,232	3,229	196	40,257	37,472	339	22,529	8,815	115,900
196	21,832	8,007	34,157	6,487	600	36,232	3,229	196	40,257	37,850	339	22,529	8,815	116,278
196	22,210	8,367	34,775	6,489	600	36,109	3,229	196	40,134	38,229	339	22,529	9,187	116,908
198	22,192	8,367	34,775	6,489	600	36,109	3,245	198	40,153	37,730	339	22,529	9,187	116,428
198	22,192	8,367	34,775	6,489	600	36,109	3,245	198	40,153	37,730	339	22,529	9,187	116,428
196	22,210	8,664	35,070	6,490	600	36,109	3,226	196	40,131	37,749	339	22,529	9,509	116,747
196	22,210	8,664	35,070	6,490	600	36,109	3,226	196	40,131	37,749	339	22,529	9,509	116,747
196	22,689	9,031	36,083	6,490	600	36,277	3,226	196	40,299	38,227	339	22,529	9,906	117,790
196	22,689	9,031	36,083	6,490	600	36,277	3,226	196	40,299	38,321	339	21,850	9,906	117,205
196	22,687	9,190	36,240	6,490	600	36,370	3,226	196	40,392	38,319	339	21,850	10,086	117,477
196	22,687	9,632	36,665	6,490	600	36,370	3,209	196	40,376	38,413	339	21,850	10,528	117,996

3. 발전회사 및 발전원별 발전설비용량(1/2)
Generating Capacity by GENCO's and Type(1/2)

구 분	남 동							중 부			
	수 력	무연탄	유연탄	중 유	복 합	신재생	계	수 력	무연탄	유연탄	중 유
2008	606	325	6,580	530	900	-	8,941	1,004	400	4,000	165
2009	608	325	6,580	530	922	-	8,965	1,009	400	4,000	155
2010	608	325	6,580	540	922	-	8,976	1,009	400	4,000	155
2011	12	325	6,580	556	922	-	8,396	8	400	4,000	156
2012	12	325	6,909	-	922	31	8,199	8	400	4,000	150
2013	12	325	6,909	-	922	58	8,226	8	400	4,000	150
2014	18	325	8,649	-	922	62	9,976	8	400	4,000	150
2015	20	325	8,649	-	922	66	9,981	8	400	4,000	150
2016	20	325	8,989	-	922	76	10,332	13	400	4,000	150
2017	19	200	8,989	-	922	215	10,344	13	400	5,852	150
2017.08	19	200	8,989	-	922	212	10,341	13	-	4,926	150
2017.09	19	200	8,989	-	922	212	10,341	13	-	5,852	150
2017.10	19	200	8,989	-	922	212	10,341	13	-	5,852	150
2017.11	19	200	8,989	-	922	212	10,341	13	-	5,852	150
2017.12	19	200	8,989	-	922	215	10,344	13	-	5,852	150
2018.01	19	200	8,989	-	922	215	10,344	13	-	5,852	150
2018.02	19	200	8,989	-	922	215	10,344	13	-	5,852	150
2018.03	19	200	8,989	-	922	221	10,351	13	-	5,852	150
2018.04	19	200	8,989	-	922	221	10,351	13	-	5,852	150
2018.05	19	200	8,989	-	922	221	10,351	13	-	5,852	150
2018.06	19	200	8,989	-	922	221	10,351	13	-	5,852	150
2018.07	19	200	8,989	-	922	239	10,368	13	-	5,945	150
2018.08	19	200	8,989	-	922	239	10,368	13	-	5,945	150

주) 발전부문 분리 (2001. 4. 2)로 4월부터 자회사별 설비용량 수록

주) 2012. 6월부터 신재생 발전설비 분리수록

(단위 : MW)

중 부					서 부						
가 스	복 합	내 연	신재생	계	수 력	무연탄	유연탄	중 유	복 합	신재생	계
1,538	2,304	95	-	9,505	1,202	-	4,000	1,403	2,280	-	8,885
888	2,812	135	-	9,399	1,202	-	4,000	1,403	2,280	-	8,885
888	2,812	135	-	9,399	1,202	-	4,000	1,403	2,998	-	9,604
888	2,362	135	-	7,949	2	-	4,000	1,403	2,998	-	8,404
888	2,362	135	10	7,952	2	-	4,000	1,400	2,998	9	8,409
888	3,343	135	10	8,933	2	-	4,000	1,400	3,482	24	8,909
388	3,343	135	11	8,434	2	-	4,000	1,400	3,867	36	9,305
388	3,343	135	21	8,444	2	-	4,000	1,400	3,867	52	9,321
250	3,343	135	52	8,342	2	-	5,050	1,400	3,867	405	10,725
250	3,343	135	61	10,203	2	-	6,100	1,400	3,867	412	11,781
-	3,343	135	52	8,618	2	-	6,100	1,400	3,867	411	11,780
-	3,343	135	53	9,546	2	-	6,100	1,400	3,867	411	11,780
-	3,343	135	53	9,546	2	-	6,100	1,400	3,867	411	11,780
-	3,343	135	53	9,546	2	-	6,100	1,400	3,867	411	11,780
-	3,343	135	61	9,553	2	-	6,100	1,400	3,867	412	11,781
-	3,343	135	61	9,553	2	-	6,100	1,400	3,387	412	11,301
-	3,343	135	61	9,553	2	-	6,100	1,400	3,387	412	11,301
-	3,343	135	61	9,553	2	-	6,100	1,400	3,387	422	11,311
-	3,343	135	61	9,553	2	-	6,100	1,400	3,387	422	11,311
-	3,343	135	63	9,555	2	-	6,100	1,400	3,387	422	11,311
-	3,437	135	63	9,649	2	-	6,100	1,400	3,387	422	11,311
-	3,437	135	63	9,742	2	-	6,100	1,400	3,387	425	11,314
-	3,530	135	63	9,836	2	-	6,100	1,400	3,387	425	11,314

3. 발전회사 및 발전원별 발전설비용량(2/2)
Generating Capacity by GENCO's and Type(2/2)

구 분	남 부							동			
	수 력	유연탄	중 유	복 합	내연	신재생	계	수 력	무연탄	유연탄	중 유
2008	400	3,500	662	3,705	-	-	8,267	700	400	4,500	1,801
2009	400	4,000	674	3,705	-	-	8,779	700	400	4,500	1,803
2010	400	4,000	685	4,553	-	-	9,638	705	400	4,500	1,804
2011	0	4,000	686	4,553	-	-	9,239	5	400	4,500	1,810
2012	0	4,000	600	4,553	40	47	9,240	5	400	4,500	1,800
2013	0	4,000	600	4,553	-	47	9,200	5	400	4,500	1,800
2014	0	4,000	200	4,970	-	47	9,217	8	400	4,500	1,200
2015	0	4,000	200	4,915	-	47	9,162	8	400	4,500	1,200
2016	0	5,022	200	4,915	-	47	10,184	8	400	6,360	1,200
2017.12	3	6,044	200	4,915	-	47	11,209	8	400	6,540	1,200
2017.08	0	6,044	200	4,915	-	47	11,206	8	400	6,540	1,200
2017.09	3	6,044	200	4,915	-	47	11,209	8	400	6,540	1,200
2017.10	3	6,044	200	4,915	-	47	11,209	8	400	6,540	1,200
2017.11	3	6,044	200	4,915	-	47	11,209	8	400	6,540	1,200
2017.12	3	6,044	200	4,915	-	47	11,209	8	400	6,540	1,200
2018.01	3	6,044	200	4,915	-	47	11,209	8	400	6,540	1,200
2018.02	3	6,044	200	4,915	-	47	11,209	8	400	6,540	1,200
2018.03	3	6,044	200	4,915	-	53	11,214	8	400	6,540	1,200
2018.04	3	6,044	200	4,915	-	53	11,214	8	400	6,540	1,200
2018.05	3	6,044	200	4,915	-	75	11,236	8	400	6,540	1,200
2018.06	3	6,044	200	4,915	-	75	11,236	8	400	6,540	1,200
2018.07	3	6,044	200	4,915	-	76	11,237	8	400	6,540	1,200
2018.07	3	6,044	200	4,915	-	76	11,237	8	400	6,540	1,200

주) 2012. 6월부터 신재생 발전설비 분리수록

주) 세종천연가스발전소(집단)은 중부 복합으로 포함

(단위 : MW)

서			한국 수력 원자력				한 전			타사
복 합	신재생	계	수 력	원자력	신재생	계	수 력	내 연	신재생	계
2,100	-	9,501	541	17,716	-	18,256	-	173	-	8,961
2,100	-	9,504	541	17,716	-	18,256	-	173	-	9,508
2,100	-	9,510	541	17,716	-	18,256	-	177	-	10,519
2,100	-	8,815	5,306	18,716	-	24,021	-	182	-	12,339
2,100	14	8,819	5,303	20,716	16	26,035	-	193	1	12,957
2,586	52	9,343	5,307	20,716	17	26,039	-	195	1	16,124
2,972	58	9,138	5,307	20,716	17	26,039	-	195	1	20,911
2,972	59	9,139	5,306	21,716	17	27,039	-	195	1	24,367
2,972	59	11,000	5,306	23,116	17	28,439	1	194	1	26,649
2,972	63	11,183	5,306	22,529	22	27,857	1	204	1	34,775
2,972	63	11,183	5,306	22,529	22	27,857	1	204	1	33,015
2,972	63	11,183	5,306	22,529	22	27,857	1	204	1	33,128
2,972	63	11,183	5,306	22,529	22	27,857	1	204	1	33,779
2,972	63	11,183	5,306	22,529	22	27,857	1	204	1	34,157
2,972	63	11,183	5,306	22,529	22	27,857	1	204	1	34,775
2,972	63	11,183	5,306	22,529	22	27,857	1	204	1	34,775
2,972	63	11,183	5,306	22,529	22	27,857	1	204	1	34,775
2,972	65	11,186	5,306	22,529	22	27,857	1	204	1	35,070
2,972	65	11,186	5,306	22,529	22	27,857	1	204	1	35,070
2,972	71	11,191	5,306	22,529	22	27,857	1	204	1	36,083
2,972	71	11,191	5,306	21,850	22	27,179	1	204	1	36,083
2,972	71	11,191	5,306	21,850	22	27,179	1	204	1	36,240
2,972	71	11,191	5,306	21,850	22	27,179	1	204	1	36,665

주) 타사 세부 발전설비용량은 12, 13page 참고

3-1. 한전 및 발전자회사 상세 발전설비용량

Installed Generating Capacity by Companies

2018. 8. 31 현재

남동발전(주) 8.8%					남부발전(주) 9.6%				
발전소		호기		설비용량	발전소		호기		설비용량
기력	삼천포	560,000	X 4	3,240,000	기력	하동	500,000 X 8	4,000,000	
	영흥	800,000 X 2	200,000 X 2			200,000 X 2			
		870,000 X 4	5,080,000	1,022,000 X 2		2,044,000			
	력	영동	200,000 X 1	200,000	신인천	GT	150,000 X 8	1,800,000	
		여수	328,600 X 1	668,600		ST	150,000 X 4		
복합	분당	GT	77,758 X 8	922,064	한림복합	GT	35,000 X 2	105,000	
		ST	185,000 X 1			부산복합	ST		35,000 X 1
		ST	115,000 X 1				GT		150,000 X 8
신재생	바이오(영동#1)		1	125,000	합	ST	150,000 X 4	848,000	
	소수력		4	18,599		GT	183,000 X 3		
	태양광		25	32,996	안동복합	ST	299,000 X 1	234,500	
	풍력		3	46,750		GT	234,500 X 1		
	기타		6	34,180		ST	127,100 X 1		127,100
합계		64 대		10,368,189	신재생	소수력		2	2,810
						태양광		27	15,077
중부발전(주) 8.3%					동서발전(주) 9.5%				
기력	보령	500,000	X 8	4,000,000	기력	당진	500,000 X 8	4,000,000	
	신보령	1,019,024	X 1	1,019,024			1,020,000 X 1	1,020,000	
	제주	925,989	X 1	925,989		호남	250,000 X 2	500,000	
	75,000	X 2	150,000	동해	200,000 X 2		400,000		
복합	보령인천	GT	150,000 X 9	1,350,000	울산	400,000 X 3	1,200,000		
		GT	160,729 X 2	949,416		복합	GT	100,000 X 6	900,000
			163,979 X 2		ST		200,000 X 1		
			150,000 X 2		513,031	ST	100,000 X 1		
			ST	182,081 X 1	513,031	합	GT	100,000 X 2	2,071,900
	ST	180,950 X 1		GT	150,000 X 4				
	GT	150,000 X 1		GT	286,600 X 2				
내연	제주내연	GT	167,104 X 2	530,441	신재생	소수력		2	8,198
		ST	196,233 X 1	187,446		태양광		13	16,706
		GT	58,947 X 2	187,446		풍력		1	3,000
신재생	제주내연	GT	55,000 X 1	55,000	기타		7	51,080	
		GT	40,000 X 2	80,000	합계		60 대		11,190,884
						서부발전(주) 9.6%			
서부발전(주) 9.6%					한국수력원자력(주) 23.1%				
기력	태안	500,000 X 8		4,000,000	원자력	고리	650,000 X 1	2,550,000	
		1,050,000 X 2		2,100,000			950,000 X 2	3,400,000	
복합	평택	GT	286,300 X 2	868,500	신월성	신월성	1,400,000 X 1	2,100,000	
		ST	295,900 X 1				700,000 X 3	2,100,000	
합	서인천	GT	150,000 X 8	1,800,000	한빛	한빛	1,000,000 X 2	2,000,000	
		ST	75,000 X 8				950,000 X 2	5,900,000	
		GT	233,300 X 2	718,400	한울	한울	1,000,000 X 4	5,900,000	
ST	251,800 X 1		950,000 X 2	5,900,000					
신재생	IGCC		346,330 X 1	346,330	원자력계	23 대		21,850,000	
						양수	무주	300,000 X 2	600,000
					양양			250,000 X 4	1,000,000
						삼랑진	300,000 X 2	600,000	
합계		70 대		11,313,690					

4. 에너지원별 발전설비용량
Installed Generating Capacity by Source

(단위 : MW)

구 분	수 력	석 탄 화 력			유 류 화 력	가 스 화 력	원자력	집 단	신재생	계
		무연탄	유연탄	소 계						
2008	5,505	1,125	22,580	23,705	5,407	17,969	17,716	1,460	728	72,491
2009	5,515	1,125	23,080	24,205	5,438	17,850	17,716	1,610	1,136	73,470
2010	5,525	1,125	23,080	24,205	5,400	19,417	17,716	2,067	1,749	76,078
2011	6,418	1,125	23,080	24,205	5,405	20,116	18,716	2,623	1,859	79,342
2012	6,446	1,125	23,409	24,534	4,888	20,116	20,716	2,768	2,338	81,806
2013	6,454	1,125	23,409	24,534	4,850	23,790	20,716	3,106	3,519	86,969
2014	6,467	1,125	25,911	27,036	4,255	30,269	20,716	-	4,474	93,216
2015	6,471	1,125	26,202	27,327	4,243	32,244	21,716	-	5,649	97,649
2016	6,485	1,125	30,910	32,035	4,129	32,624	23,116	-	7,477	105,866
2017	6,489	600	36,109	36,709	4,139	37,854	22,529	-	9,187	116,908
2017.08	6,485	600	35,306	35,906	4,139	36,679	22,529	-	8,469	114,206
2017.09	6,487	600	36,232	36,832	4,139	36,655	22,529	-	8,607	115,249
2017.10	6,487	600	36,232	36,832	4,139	37,097	22,529	-	8,815	115,900
2017.11	6,487	600	36,232	36,832	4,139	37,476	22,529	-	8,815	116,278
2017.12	6,489	600	36,109	36,709	4,139	37,854	22,529	-	9,187	116,908
2018.01	6,489	600	36,109	36,709	4,155	37,358	22,529	-	9,187	116,428
2018.02	6,489	600	36,109	36,709	4,155	37,358	22,529	-	9,187	116,428
2018.03	6,490	600	36,109	36,709	4,136	37,374	22,529	-	9,509	116,747
2018.04	6,490	600	36,109	36,709	4,136	37,374	22,529	-	9,509	116,747
2018.05	6,490	600	36,277	36,877	4,136	37,853	22,529	-	9,906	117,790
2018.06	6,490	600	36,277	36,877	4,230	37,853	21,850	-	9,906	117,205
2018.07	6,490	600	36,370	36,970	4,230	37,851	21,850	-	10,086	117,477
2018.08	6,490	600	36,370	36,970	4,307	37,851	21,850	-	10,528	117,996

주1) 신재생 : (소)수력 설비용량 불포함

주2) 자가용설비 제외

주3) 2014년 부터 집단은 에너지원별로 발전량 분류

5. 행정구역별 발전설비용량

Installed Generating Capacity by Province

2018. 8. 31 현재

(단위 : MW)

구 분	수 력	기 력					복합	내 연	원자력	신재생	계
		무연탄	유연탄	유류	LNG	계					
서울	0.4	-	-	-	64	64	-	-	-	98	162
부산	0.1	-	19	-	-	19	1,846	-	4,550	166	6,581
대구	4	-	73	44	-	116	371	-	-	64	554
인천	13	-	5,080	-	24	5,104	8,553	36	-	211	13,917
광주	2	-	-	-	-	-	115	-	-	116	233
대전	-	-	-	88	48	136	-	-	-	27	164
울산	0.3	-	-	1,200	-	1,200	2,531	-	1,400	38	5,169
경기	676	-	247	1,443	60	1,750	15,257	0.5	-	823	18,506
강원	1,517	600	3,234	-	-	3,834	1,279	-	-	939	7,569
충북	511	-	-	58	-	58	-	-	-	366	936
충남	33	-	18,085	-	-	18,085	4,179	4	-	2,068	24,369
전북	675	-	755	-	-	755	718	7	-	1,240	3,395
전남	39	-	1,481	-	-	1,481	2,379	22	5,900	1,976	11,797
경북	1,580	-	156	-	-	156	362	19	10,000	1,426	13,542
경남	1,437	-	7,240	26	-	7,266	0	1	-	511	9,215
제주	0.5	-	-	350	-	350	292	251	-	422	1,316
세종	2	-	-	-	-	-	530	-	-	38	570
합계	6,490	600	36,370	3,209	196	40,376	38,413	339	21,850	10,528	117,996

주1) 자가용설비 제외

6. 발전소 건설현황

Power Plants under Construction

2018. 6. 30 기준

구 분	발 전 소 명	설비용량 (MW)	건 설 공 기	비 고 (회 사 명)
원자력	신고리#4	1,400×1	07. 09 ~ 미정	한국수력원자력(주)
	신한울#1 신한울#2	1,400×2	'10. 04 ~ 미정	한국수력원자력(주)
	신고리#5 신고리#6	1,400×2	'16. 06 ~ '23. 03	한국수력원자력(주)
복 합	서울복합#1,2	GT : 266*2 ST : 134*2	'13. 06 ~ '19. 08	중부발전 (주)
	신평택천연가스발전	GT : 319.2*2 ST : 304.5*1	'17. 01 ~ '19. 11	신평택발전(주)
	제주LNG 복합	GT : 80*2 ST : 40*2	'16. 05 ~ '18. 08	중부발전 (주)
기력(유연탄)	신서천화력	1,000×1	'15. 11 ~ '20. 03	중부발전 (주)
	고성하이화력#1,2	1,040×2	17. 02 ~ '21. 10	고성그린파워
	강릉안인화력 #1,2	1,040×2	17. 05 ~ '22. 06	강릉에코파워

주1) KPX홈페이지(www.kpx.or.kr) 발전소 건설사업 추진현황 자료 참고

Ⅲ. 발전량

7. 발전원별
8. 발전회사별
9. 에너지원별
10. 행정구역별
11. 연료사용량

7. 발전원별 발전량
Gross Generation

구 분	발 전 자 회 사 및 한 전(도서)											타		
	수 력	기 력					복 합	내 연	원자력	신재생	계	수 력	기 력	
		무연탄	유연탄	유류	L N G	소 계							유연탄	유류
2008	3,836	6,929	167,227	8,050	1,518	183,724	55,909	503	150,958	-	394,930	1,727	-	7,089
2009	4,091	7,978	185,826	12,075	762	206,640	47,580	697	147,771	-	406,779	1,550	-	8,368
2010	4,393	8,360	189,927	11,009	2,288	211,584	70,081	731	148,596	-	435,384	2,079	-	12,772
2011	4,815	8,504	191,012	9,634	2,233	211,383	71,668	821	154,723	-	443,409	3,016	-	20,657
2012	5,140	8,768	190,562	13,553	3,453	216,336	75,751	752	150,327	210	448,516	2,513	-	15,007
2013	5,679	8,054	193,064	13,941	3,526	218,585	84,561	741	138,784	406	448,756	2,715	-	14,403
2014	5,976	8,506	195,259	6,838	568	211,172	68,134	656	156,407	570	442,914	1,844	-	16,700
2015	4,427	7,438	199,895	8,822	222	216,378	45,923	643	164,762	625	432,758	1,369	-	19,755
2016	4,835	7,761	200,151	13,055	369	221,335	46,477	573	161,995	1,098	436,314	1,799	9,244	667
2017	5,263	4,427	222,760	5,225	220	232,631	36,957	513	148,427	2,693	426,484	1,733	14,424	696
2017.01~08	3,632	3,461	147,289	3,502	220	154,472	24,051	357	102,256	1,640	286,408	1,204	9,217	419
2017.08	667	369	21,147	333	-	21,850	3,398	57	11,914	348	38,235	301	1,407	10
2017.09	505	215	19,463	237	-	19,915	2,083	25	12,333	341	35,202	169	1,167	18
2017.10	429	280	18,055	160	-	18,495	2,120	44	12,109	148	33,344	138	1,169	26
2017.11	343	222	17,742	321	-	18,285	3,562	40	11,291	276	33,797	108	1,156	99
2017.12	354	248	20,211	1,004	-	21,464	5,140	47	10,438	289	37,733	113	1,717	133
2018.01~08	3,549	1,623	149,353	4,664	-	155,640	33,327	397	85,760	2,294	280,967	1,370	12,207	949
2018.01	378	139	21,702	1,243	-	23,083	5,221	56	9,826	385	38,949	112	1,659	230
2018.02	337	124	19,614	729	-	20,467	4,163	47	8,791	294	34,099	103	1,406	210
2018.03	357	91	18,502	779	-	19,372	4,422	40	9,243	327	33,762	106	1,385	118
2018.04	364	126	15,641	179	-	15,947	4,185	43	9,423	374	30,335	134	1,480	75
2018.05	508	137	15,804	274	-	16,214	3,628	54	11,369	182	31,955	283	1,600	59
2018.06	490	204	16,042	247	-	16,494	3,496	56	11,303	169	32,008	242	1,493	100
2018.07	592	391	20,400	578	-	21,369	3,894	55	13,052	172	39,134	216	1,605	77
2018.08	523	412	21,647	636	-	22,695	4,317	46	12,753	391	40,725	174	1,579	80

주1) 2012. 6월부터 신재생 발전량 분리수록
주2) 2016년부터 타사 기력 발전원별 구분 수록

(단위 : GWh)

L N G	사			합 계										
	복합	신재생	계	수 력	기 력					복합	내 연	원자력	신재생	계
					무연탄	유연탄	유류	LNG	계					
-	18,610	-	27,425	5,563	6,929	167,227	15,139	1,518	190,812	74,519	503	150,958	-	422,355
-	16,906	-	26,825	5,641	7,978	185,826	20,444	762	215,009	64,486	697	147,771	-	433,604
-	24,424	-	39,276	6,472	8,360	189,927	23,781	2,288	224,356	94,506	731	148,596	-	474,660
-	29,811	-	53,484	7,831	8,504	191,012	30,291	2,233	232,040	101,479	821	154,723	-	496,893
-	35,131	8,408	61,058	7,652	8,768	190,562	28,560	3,453	231,343	110,882	752	150,327	8,618	509,574
-	39,839	11,434	68,391	8,394	8,054	193,064	28,344	3,526	232,988	124,400	741	138,784	11,841	517,147
-	46,011	14,501	79,056	7,820	8,506	195,259	23,538	568	227,872	114,146	656	156,407	15,072	521,971
-	57,514	16,693	95,332	5,796	7,438	199,895	28,577	222	236,133	103,437	643	164,762	17,318	528,090
3,605	70,398	18,414	104,127	6,634	7,761	209,395	13,721	3,974	234,851	116,875	573	161,995	19,512	540,441
226	88,516	21,452	127,046	6,995	4,427	237,184	5,920	446	247,977	125,473	513	148,427	24,145	553,530
137	57,397	14,184	82,557	4,836	3,461	156,505	3,921	357	164,245	81,448	357	102,256	15,823	368,965
4	7,176	1,818	10,716	968	369	22,554	343	4	23,271	10,574	57	11,914	2,166	48,951
5	5,827	1,810	8,994	674	215	20,629	255	5	21,104	7,910	25	12,333	2,151	44,196
7	5,900	1,802	9,042	567	280	19,223	186	7	19,697	8,019	44	12,109	1,950	42,387
25	9,104	1,791	12,283	451	222	18,898	420	25	19,565	12,666	40	11,291	2,067	46,081
52	10,289	1,865	14,169	468	248	21,928	1,138	52	23,366	15,429	47	10,438	2,155	51,902
1,489	71,317	15,909	103,242	4,919	1,623	161,561	5,613	1,489	170,285	104,644	397	85,760	18,203	384,208
257	10,298	1,900	14,457	490	139	23,361	1,473	257	25,230	15,519	56	9,826	2,285	53,406
228	8,650	1,777	12,373	440	124	21,020	938	228	22,311	12,813	47	8,791	2,070	46,472
217	9,649	2,012	13,486	463	91	19,888	897	217	21,092	14,071	40	9,243	2,339	47,249
234	8,837	2,062	12,822	498	126	17,121	255	234	17,736	13,022	43	9,423	2,436	43,157
44	8,364	1,994	12,344	791	137	17,404	332	44	17,916	11,992	54	11,369	2,177	44,299
154	8,500	1,998	12,486	732	204	17,535	347	154	18,240	11,996	56	11,303	2,167	44,495
173	8,628	2,123	12,823	808	391	22,006	655	173	23,225	12,522	55	13,052	2,295	51,956
182	8,391	2,044	12,450	697	412	23,227	716	182	24,536	12,708	46	12,753	2,435	53,175

8. 발전회사별 발전량(1/3)

Gross Generation by GENCO's (1/3)

구 분	남 동						
	수력	무연탄	유연탄	유 류	복 합	신재생	계
2008	419	2,060	44,471	622	3,800	-	51,371
2009	450	2,202	53,277	1,336	3,146	-	60,411
2010	504	2,397	52,854	1,529	4,375	-	61,658
2011	46	2,515	53,439	1,326	3,821	-	61,147
2012	55	2,629	55,948	181	4,558	43	63,415
2013	57	2,387	55,719	0	4,209	74	62,446
2014	66	2,529	62,104	0	2,650	86	67,435
2015	73	2,378	66,531	0	1,898	109	70,989
2016	74	2,102	67,215	-	2,189	116	71,696
2017	75	792	66,787	-	2,261	716	70,632
2017.01~08	48	459	43,315	-	1,434	364	45,620
2017.08	7	110	6,422	-	12	85	6,635
2017.09	7	71	5,985	-	29	88	6,179
2017.10	6	65	5,856	-	71	89	6,087
2017.11	6	88	5,483	-	244	86	5,907
2017.12	7	110	6,150	-	484	89	6,839
2018.01~08	41	263	42,228	-	1,379	672	44,583
2018.01	7	0	6,420	-	505	90	7,021
2018.02	6	0	5,814	-	424	85	6,328
2018.03	5	0	4,931	-	197	92	5,225
2018.04	4	0	3,944	-	34	73	4,055
2018.05	4	0	4,595	-	18	29	4,646
2018.06	3	0	4,180	-	4	98	4,286
2018.07	6	123	6,022	-	91	103	6,345
2018.08	5	141	6,323	-	106	101	6,676

(단위 : GWh)

중 부								
수력	무연탄	유연탄	유 류	가 스	복 합	내 연	신재생	계
694	2,007	28,007	753	1,518	9,761	237	-	42,976
778	2,639	30,805	739	762	9,954	366	-	46,042
744	2,858	33,536	701	2,288	15,168	429	-	55,724
21	3,019	33,309	744	2,233	13,997	495	-	53,818
12	3,039	31,141	901	3,453	13,343	474	14	52,377
19	2,923	33,271	951	3,526	17,272	486	17	58,464
18	2,788	33,380	824	568	14,615	414	16	52,623
19	2,527	32,259	797	222	9,839	401	24	46,089
20	2,734	31,415	790	369	9,428	324	72	45,152
31	1,095	40,717	804	220	9,734	245	107	52,954
18	1,095	26,667	528	220	6,584	180	74	35,366
2	-	4,014	77	-	860	32	8	4,993
3	-	3,650	64	-	498	4	7	4,226
4	-	3,333	64	-	464	23	7	3,896
3	-	3,096	72	-	925	17	7	4,120
3	-	3,971	76	-	1,263	22	12	5,346
20	-	26,156	547	-	7,279	207	120	34,328
3	-	4,035	79	-	1,290	31	17	5,454
2	-	3,709	74	-	889	25	13	4,712
2	-	2,958	79	-	877	16	17	3,950
2	-	2,328	44	-	1,203	20	14	3,611
2	-	2,489	46	-	776	32	15	3,360
2	-	2,744	73	-	636	35	14	3,505
4	-	3,808	78	-	672	30	13	4,603
4	-	4,085	74	-	935	18	16	5,133

8. 발전회사별 발전량 (2/3)

Gross Generation by GENCO's (2/3)

구 분	서 부						
	수력	무연탄	유연탄	중 유	복 합	신재생	계
2008	846	-	32,834	1,938	11,336	-	46,955
2009	919	-	33,083	3,648	8,078	-	45,728
2010	910	-	32,601	3,150	16,372	-	53,033
2011	4	-	33,725	2,613	18,472	-	54,815
2012	4	-	32,737	3,605	19,737	8	56,091
2013	4	-	33,884	3,677	20,480	27	58,072
2014	4	-	32,716	1,943	15,558	61	50,282
2015	4	-	32,462	3,578	11,923	122	48,090
2016	4	-	32,984	5,187	11,778	523	50,476
2017	3	-	38,749	1,082	6,638	1,459	47,930
2017.01~08	2	-	25,920	764	4,494	936	32,116
2017.08	0	-	3,483	52	712	220	4,468
2017.09	0	-	3,263	0	339	208	3,810
2017.10	0	-	3,057	0	419	13	3,489
2017.11	0	-	3,115	18	690	156	3,980
2017.12	0	-	3,394	299	695	147	4,535
2018.01~08	2	-	27,023	1,015	7,061	1,150	36,250
2018.01	0	-	3,563	395	756	234	4,947
2018.02	0	-	3,172	172	587	159	4,089
2018.03	0	-	3,670	52	795	191	4,708
2018.04	0	-	3,204	0	936	240	4,381
2018.05	0	-	3,239	20	921	81	4,261
2018.06	0	-	3,242	24	836	14	4,116
2018.07	0	-	3,400	145	1,031	13	4,590
2018.08	0	-	3,532	207	1,198	220	5,158

(단위 : GWh)

남 부						
수력	무연탄	유연탄	중 유	복 합	신재생	계
110	-	25,808	1,723	22,947	-	50,588
158	-	32,378	2,393	19,729	-	54,658
135	-	33,661	2,165	23,993	-	59,954
0	-	33,550	2,002	24,781	-	60,334
0	-	33,612	2,668	27,015	85	63,381
0	-	33,275	2,489	32,230	113	68,107
0	-	31,469	1,378	26,019	103	58,969
0	-	31,912	1,333	15,390	93	48,728
0	-	32,791	1,348	15,786	97	50,022
3	-	37,857	1,253	10,794	92	49,999
0	-	25,105	839	7,192	58	33,193
0	-	3,717	125	1,199	4	5,045
1	-	3,548	103	665	6	4,324
1	-	3,080	96	561	9	3,746
1	-	2,989	98	866	8	3,962
0	-	3,135	117	1,510	11	4,774
5	-	27,990	866	11,269	123	40,252
1	-	3,930	122	1,535	12	5,601
0	-	3,625	118	1,299	10	5,052
0	-	3,701	117	1,560	9	5,388
0	-	3,240	110	1,255	11	4,617
0	-	2,815	115	1,357	23	4,309
0	-	2,999	54	1,395	16	4,465
1	-	3,718	115	1,433	19	5,287
2	-	3,962	115	1,434	21	5,533

8. 발전회사별 발전량 (3/3)

Gross Generation by GENCO's (3/3)

구 분	등 서						
	수력	무연탄	유연탄	중 유	복 합	신재생	계
2008	469	2,863	36,107	3,108	8,065	-	50,612
2009	586	3,137	36,283	4,098	6,672	-	50,777
2010	597	3,105	37,277	3,555	10,173	-	54,707
2011	30	2,970	36,988	3,053	10,596	-	53,637
2012	28	3,100	37,124	6,368	10,978	42	57,641
2013	27	2,745	36,915	6,836	10,370	154	57,047
2014	26	3,190	35,590	2,693	9,290	282	51,071
2015	32	2,533	36,731	3,114	6,873	255	49,538
2016	25	2,925	35,746	5,730	7,296	269	51,990
2017	23	2,540	38,649	2,086	7,530	291	51,119
2017.01~08	15	1,907	26,281	1,371	4,348	190	34,112
2017.08	2	260	3,512	80	616	28	4,496
2017.09	2	144	3,018	70	552	28	3,814
2017.10	2	216	2,729	0	604	27	3,579
2017.11	2	134	3,059	133	837	17	4,182
2017.12	2	138	3,562	513	1,188	29	5,432
2018.01~08	16	1,360	25,957	2,237	6,340	208	36,118
2018.01	3	139	3,755	646	1,135	30	5,708
2018.02	2	124	3,295	366	964	24	4,775
2018.03	2	91	3,242	531	993	15	4,874
2018.04	2	126	2,925	25	756	32	3,866
2018.05	2	137	2,666	93	556	32	3,484
2018.06	2	204	2,876	96	624	25	3,827
2018.07	2	269	3,452	240	666	21	4,650
2018.08	2	271	3,746	239	645	30	4,934

(단위 : GWh)

한 수 원				한 전			타 사
수 력	원자력	신재생	계	수 력	내 연	신재생	계
1,297	150,958	-	152,255	-	172	0	27,426
1,201	147,771	-	148,971	-	191	0	26,824
1,502	148,596	-	150,098	-	211	0	39,276
4,714	154,723	-	159,437	-	222	0	53,484
5,029	150,327	5	155,362	-	233	0	61,063
5,568	138,784	22	144,374	-	247	0	68,391
5,859	156,406	22	162,287	-	246	0	79,056
4,295	164,762	22	169,080	-	245	0	95,332
4,708	161,995	19	166,722	4	250	1	104,127
5,124	148,427	27	153,578	3	268	1	127,046
3,546	102,256	18	105,820	3	177	1	82,557
655	11,914	3	12,572	0	25	0	10,716
491	12,333	3	12,827	0	21	0	8,994
415	12,109	2	12,526	0	22	0	9,042
330	11,291	2	11,624	0	23	0	12,283
342	10,438	2	10,781	0	25	0	14,169
3,465	85,760	21	89,246	0	190	1	103,242
365	9,826	2	10,192	0	25	0	14,457
326	8,791	2	9,120	0	22	0	12,373
347	9,243	3	9,593	0	24	0	13,486
356	9,423	3	9,782	0	22	0	12,822
501	11,369	3	11,872	0	22	0	12,344
482	11,303	3	11,788	0	21	0	12,486
579	13,052	3	13,634	0	25	0	12,823
509	12,753	3	13,264	0	28	0	12,450

주) 타사 세부 발전량은 24, 25page 참고

9. 에너지원별 발전량
Power Generation by Source

(단위:GWh)

구 분	수 력	석 탄 화 력			유 류 화 력	가 스 화 력	원자력	집 단	신재생	합 계
		무연탄	유연탄	소 계						
2008	5,561	5,010	168,498	173,508	10,094	75,809	150,958	5,336	1,090	422,355
2009	5,641	5,559	187,657	193,216	14,083	65,274	147,771	5,827	1,791	433,604
2010	6,472	4,393	193,523	197,916	12,878	96,734	148,596	8,080	3,984	474,660
2011	7,831	3,269	196,855	200,124	12,493	101,702	154,723	12,429	7,592	496,893
2012	7,652	7,113	191,718	198,831	15,156	113,984	150,327	13,061	10,563	509,574
2013	8,543	3,912	196,532	200,444	15,752	127,724	138,784	14,633	11,267	517,148
2014	7,820	4,633	198,813	203,446	24,950	114,654	156,407	-	14,695	521,971
2015	5,796	4,902	199,328	204,230	31,616	100,783	164,762	-	20,904	528,091
2016	6,634	5,984	207,820	213,803	14,221	120,852	161,995	-	22,936	540,441
2017	6,995	2,378	236,421	238,799	8,663	122,773	148,427	-	27,874	553,530
2017.01~08	4,836	1,861	156,201	158,061	6,991	78,673	102,256	-	18,148	368,965
2017.08	968	94	22,626	22,720	282	10,567	11,914	-	2,499	48,951
2017.09	674	122	20,504	20,627	158	7,911	12,333	-	2,494	44,196
2017.10	567	153	19,123	19,275	163	8,021	12,109	-	2,251	42,387
2017.11	451	121	18,779	18,900	345	12,690	11,291	-	2,402	46,081
2017.12	468	121	21,814	21,935	1,005	15,478	10,438	-	2,579	51,902
2018.01~08	4,919	1,866	159,328	161,194	5,238	105,956	85,760	-	21,140	384,208
2018.01	490	85	23,236	23,320	1,321	15,773	9,826	-	2,676	53,406
2018.02	440	71	20,903	20,973	933	13,026	8,791	-	2,308	46,472
2018.03	463	906	18,945	19,852	801	14,279	9,243	-	2,611	47,249
2018.04	498	90	16,984	17,074	244	13,244	9,423	-	2,674	43,157
2018.05	791	118	17,226	17,344	279	12,011	11,369	-	2,505	44,299
2018.06	732	206	17,315	17,522	326	12,123	11,303	-	2,488	44,495
2018.07	808	63	22,144	22,206	612	12,662	13,052	-	2,617	51,956
2018.08	697	327	22,576	22,903	722	12,839	12,753	-	3,261	53,175

※ 기술퇴체 및 음영표시부분은 잠정실적
 주1) 신재생 : (소)수력 발전량 불포함
 주2) 내연력은 유류가 주연료임.
 주3) 2014년 부터 집단은 에너지원별로 발전량 분류

10. 행정구역별 발전량

Power Generation by Province

2018. 8. 31 현재

(단위:GWh)

구 분	수 력	기 력					복합	내 연	원자력	신재생	계
		무연탄	유연탄	유류	LNG	계					
서울	0.0	-	-	-	5	5	-	-	-	42	47
부산	0.0	-	2	0	-	2	605	-	3,089	46	3,742
대구	0.2	-	0	0	-	0	135	-	-	9	144
인천	3	-	3,633	-	0	3,633	2,792	12	-	42	6,481
광주	1	-	-	-	-	-	10	-	-	15	25
대전	-	-	-	0	2	2	-	-	-	3	5
울산	0.1	-	-	247	-	247	885	-	726	6	1,864
경기	82	-	10	207	175	392	5,680	0.1	-	174	6,327
강원	141	412	1,913	-	-	2,325	285	-	-	201	2,951
충북	65	-	-	0	-	0	-	-	-	50	115
충남	8	-	11,041	2	-	11,043	535	0.7	-	858	12,445
전북	87	-	576	-	-	576	228	1	-	190	1,082
전남	6	-	890	63	-	953	1,076	5	1,934	430	4,404
경북	168	-	64	0.0	-	64	160	7	7,003	249	7,650
경남	137	-	5,097	6	-	5,103	0	0.1	-	59	5,299
제주	0.2	-	-	189	-	189	26	20	-	57	292
세종	-	-	-	-	-	-	294	-	-	6	300
합계	697	412	23,227	716	182	24,536	12,708	46	12,753	2,435	53,175

주1) 자가용설비 제외

11. 화력발전원별 연료사용량

Fuel Consumption by Thermal Power Plant

구 분	기 력							
	무 연 탄 발 전 소				유 연 탄 발 전 소			
	무연탄	유연탄	중유	경유	유연탄	중유	경유	중유
2008	2,534	544	145,656	2,358	62,692	2,032	34,416	1,820,308
2009	2,690	816	118,092	3,118	70,243	1,289	28,835	2,722,041
2010	2,404	1,674	65,909	2,029	74,729	2,752	26,285	2,536,571
2011	1,659	2,211	51,778	2,243	77,644	1,388	33,722	1,876,803
2012	1,960	3,908	50,560	1,056	76,081	2,166	30,900	3,061,789
2013	1,729	1,798	53,685	6,259	76,962	1,434	32,628	3,318,320
2014	2,044	1,500	49,602	2,627	76,188	1,069	26,607	1,438,691
2015	2,125	955	45,997	5,131	78,477	1,301	38,285	1,723,495
2016	2,528	609	61,513	5,626	77,436	2,610	67,458	2,659,993
2017	1,029	862	29,645	3,436	88,355	1,772	69,747	847,523
2017.01~08	831	622	29,645	2,552	57,712	776	55,468	575,788
2017.08	44	124	0	473	8,655	104	3,108	44,988
2017.09	43	62	0	592	7,977	825	5,454	20,682
2017.10	59	71	0	222	7,337	171	2,603	18,047
2017.11	45	54	0	27	7,148	0	2,038	47,017
2017.12	51	53	0	42	8,183	0	4,184	185,989
2018.01~08	556	154	0	792	60,729	1,213	35,746	783,476
2018.01	36	21	0	0	8,921	459	6,297	222,731
2018.02	32	20	0	463	8,043	0	5,859	125,238
2018.03	28	12	0	0	7,558	12	3,839	142,712
2018.04	43	12	0	0	6,285	153	5,097	22,475
2018.05	48	11	0	0	6,388	0	4,006	29,836
2018.06	92	1	0	0	6,407	268	3,207	31,969
2018.07	142	34	0	302	8,274	128	5,848	97,593
2018.08	135	42	0	27	8,853	192	1,593	110,921

주1) 한전 및 자회사 연료사용량임

[단위 : 천t (석탄), t(LNG), kℓ (유류)]

중 유 발 전 소					내 연 발 전 소		복 합 화 력 발 전 소	
중 유 발 전 소		L N G 발 전 소			내 연 발 전 소		복 합 화 력 발 전 소	
경유	L N G	중유	경유	L N G	중유	경유	경유	L N G
16,033	13,430	0	531	312,040	66,603	45,965	7,604	8,666,161
12,701	15,009	0	48	162,759	102,251	51,881	13,228	6,760,181
15,814	18,353	0	1	447,121	105,425	56,474	13,088	9,847,556
16,662	99,412	0	0	430,443	120,397	55,220	12,617	10,015,897
5,353	74,288	0	1	623,509	101,788	47,114	3,568	10,251,212
7,140	33,003	0	0	607,670	98,234	65,051	16,811	12,332,117
4,378	13,042	0	1	117,129	82,231	64,971	12,004	8,910,448
2,469	6,176	0	0	51,095	79,846	65,325	200	5,976,967
2,402	12,092	0	0	66,002	59,405	66,990	12,727	6,394,616
557	10,139	0	0	51,224	48,946	71,244	28,577	5,224,490
396	7,065	0	0	51,224	35,995	47,588	20,333	3,398,815
36	723	-	-	-	6,417	7,000	3,993	465,371
32	15	-	-	-	780	5,585	863	284,971
12	10	-	-	-	4,540	5,638	1,624	289,833
19	738	-	-	-	3,388	5,872	1,282	505,791
98	2,311	-	-	-	4,242	6,561	4,476	745,080
533	9,521	-	-	-	40,590	51,863	61,066	4,593,978
16	3,942	-	-	-	6,097	6,681	7,298	755,332
56	1,084	-	-	-	4,692	6,235	3,815	600,374
117	604	-	-	-	3,237	6,181	3,324	614,546
76	28	-	-	-	4,069	5,908	4,606	565,511
59	453	-	-	-	6,074	6,609	7,474	489,347
144	629	-	-	-	6,877	5,854	9,100	472,576
37	1,543	-	-	-	5,875	7,068	10,898	507,226
28	1,238	-	-	-	3,670	7,328	14,551	589,066

※ 기물임체 및 음영표시부분은 잠정실적

11-1. 에너지원별 연료사용량
Fuel Consumption for Generation

[단위 : t (석탄), t(LNG), kℓ (유류)]

구 분	석 탄 (t)			중 유	경 유	LNG
	무 연 탄	유 연 탄	계			
2008	2,534,021	63,236,233	65,770,254	2,034,600	106,907	8,275,500
2009	2,690,328	71,058,967	73,749,295	2,943,672	109,811	6,936,238
2010	2,404,050	76,402,994	78,807,044	2,710,657	113,691	10,313,030
2011	1,658,801	79,854,167	81,512,968	2,050,365	120,464	10,545,752
2012	1,796,721	79,988,533	81,785,254	3,216,304	140,700	11,234,359
2013	1,728,664	78,759,805	80,488,469	3,471,672	127,890	12,986,803
2014	2,043,992	77,688,128	79,732,120	1,571,593	110,588	9,040,619
2015	2,125,486	79,432,656	81,558,142	1,850,640	111,411	6,034,238
2016	2,528,364	78,044,996	80,573,360	2,783,521	155,203	6,472,710
2017	1,078,762	89,217,393	90,296,155	927,885	173,561	5,285,852
2017.01~08	831,164	58,333,711	59,164,875	642,204	126,337	3,457,103
2017.08	43,903	8,779,342	8,823,245	51,509	14,610	466,094
2017.09	58,404	8,038,532	8,096,936	22,287	12,525	284,986
2017.10	84,027	7,408,077	7,492,104	22,758	10,099	289,843
2017.11	53,858	7,201,401	7,255,259	50,405	9,238	506,528
2017.12	51,309	8,235,672	8,286,981	190,231	15,361	747,391
2018.01~08	582,249	60,882,674	61,464,923	825,278	149,999	4,603,499
2018.01	36,227	8,941,716	8,977,943	229,287	20,292	759,273
2018.02	31,553	8,063,136	8,094,689	129,930	16,427	601,458
2018.03	30,622	7,570,410	7,601,032	145,962	13,461	615,150
2018.04	42,501	6,297,285	6,339,786	26,698	15,688	565,540
2018.05	54,772	6,399,076	6,453,848	35,909	18,148	489,800
2018.06	96,701	6,407,357	6,504,058	39,114	18,305	473,205
2018.07	146,914	8,307,879	8,454,793	103,596	24,152	508,769
2018.08	142,959	8,895,815	9,038,774	114,783	23,528	590,303

- 주1) 시운전 연료 사용량 포함
- 주2) 한전 및 자회사 연료사용량임
- 주3) 기울임체 및 음영표시부분은 잠정실적

IV. 전력 구입

12. 전력구입실적 종합
13. 발전원별
14. 발전회사별
15. 전력시장 가격 및 정산단가
16. PPA (Power Purchase Agreement)

12. 전력구입실적 종합 (잠정)

Summary of Power Purchase Results (Market & PPA)

구분	월 별		단 위	2017년		2018년		증 감 률 (%)		점 유 율 (%)	
	구분	월 별		8월	1~ 8월	8월	1~ 8월	8월	1~ 8월	8월	1~ 8월
구입량	전력시장	기저	MWh	32,104,832	242,769,546	33,620,957	230,462,457	4.7	-5.1	66.1	62.2
		일반	"	14,030,434	104,286,755	16,290,126	131,236,913	16.1	25.8	32.0	35.4
		소계	"	46,135,266	347,056,301	49,911,083	361,699,370	8.2	4.2	98.1	97.7
	PPA	"	595,827	7,151,988	979,650	8,587,363	64.4	20.1	1.9	2.3	
	계	"	46,731,092	354,208,289	50,890,733	370,286,734	8.9	4.5	100.0	100.0	
구입금액	전력시장	기저	백만원	2,218,535	17,950,128	2,482,367	18,039,394	11.9	0.5	53.6	52.5
		일반	"	1,531,044	11,470,036	1,998,668	15,155,222	30.5	32.1	43.1	44.1
		소계	"	3,749,579	29,420,164	4,481,035	33,194,616	19.5	12.8	96.7	96.7
	PPA	"	81,890	936,914	152,904	1,147,531	86.7	22.5	3.3	3.3	
	계	"	3,831,469	30,357,079	4,633,939	34,342,146	20.9	13.1	100.0	100.0	
구입단가	전력시장	기저	원/kWh	69.10	73.94	73.83	78.27	6.8	5.9	81.1	84.4
		일반	"	109.12	109.99	122.69	115.48	12.4	5.0	134.7	124.5
		소계	"	81.27	84.77	89.78	91.77	10.5	8.3	98.6	99.0
	PPA	"	137.44	131.00	156.08	133.63	13.6	2.0	171.4	144.1	
	평균	"	81.99	85.70	91.06	92.74	11.1	8.2	100.0	100.0	
한계가격	SMP	"	76.40	82.55	91.02	91.42	19.1	10.7	0.0	0.0	

주1) 기저발전기는 원자력, 석탄(유연탄), 국내탄(무연탄) 발전기를 말함

주2) 시장 구입금액은 제약비 양수 정산금(Pumping Coff)이 반영된 금액임

주3) PPA는 2001.4월 발전분리이전 민간발전사업자로 전력구매계약분(Power Purchase Agreement) 포함임

주4) '07. 2월이후 구역전기사업자 시장구입분 포함

주5) 구입단가의 점유율은 평균 구입단가(기준=100) 대비 비율로 표시

주6) RPS 제외분임

13. 발전원별 전력구입실적 (2/3)

Power Purchase Results by Energy Sources (2/3)

(단위 : 억원)

구 분	구 입 금 액									
	원자력	유연탄	무연탄	유 류	LNG 복합	수 력	양 수	신재생	기타	합 계
2014	81,917	119,940	7,063	16,705	184,701	3,330	8,655	16,573	281	439,165
2015	98,360	132,699	7,306	14,079	134,448	1,787	4,833	15,725	274	409,511
2016	104,892	147,322	6,263	14,624	111,020	1,862	3,846	15,024	288	405,141
2017	85,734	177,549	3,849	9,485	131,632	2,186	4,503	18,032	455	433,426
2017.01~08	58,449	123,029	3,059	6,488	86,403	1,572	3,107	11,832	263	294,202
2017.08	6,474	15,998	300	788	11,428	435	480	1,568	24	37,496
2017.09	6,224	13,886	165	526	8,191	185	423	1,499	33	31,133
2017.10	5,494	12,047	207	339	7,258	133	316	1,416	35	27,245
2017.11	7,418	12,312	182	592	12,243	130	289	1,541	63	34,770
2017.12	8,148	16,274	237	1,540	17,537	166	367	1,743	62	46,076
2018.01~08	50,561	134,081	1,520	8,610	117,650	2,031	3,244	13,869	381	331,946
2018.01	6,303	20,464	138	1,917	18,569	186	431	1,864	59	49,930
2018.02	5,365	17,673	119	1,287	14,882	163	365	1,582	52	41,488
2018.03	6,015	17,422	90	1,290	16,763	145	393	1,881	52	44,051
2018.04	5,111	15,570	154	436	13,134	168	301	1,767	44	36,687
2018.05	5,997	13,092	115	570	11,488	391	333	1,488	48	33,522
2018.06	6,513	13,896	175	634	12,754	361	369	1,614	48	36,363
2018.07	7,782	18,289	348	1,208	14,778	372	505	1,769	42	45,094
2018.08	7,475	17,675	381	1,267	15,281	246	546	1,904	35	44,810

주1) 구입금액은 제약비양수 정산금(Pumping Coff)이 반영된 금액임

주2) 전력기반기금의 지원금액 제외

13. 발전원별 전력구입실적 (3/3)

Power Purchase Results by Energy Sources (3/3)

(단위 : 원/kWh)

구 분	구 입 단 가									
	원자력	유연탄	무연탄	유 류	LNG 복합	수 력	양 수	신재생 ¹⁾	기타	합 계
2014	54.96	63.35	91.18	220.97	160.80	160.89	171.83	117.05	142.72	89.62
2015	62.61	68.34	107.78	149.91	126.31	118.39	132.82	99.51	103.79	82.71
2016	68.03	73.84	88.57	110.27	99.38	87.01	106.35	88.22	78.25	79.61
2017	60.76	78.97	95.89	165.40	111.99	96.95	107.96	90.03	82.00	83.31
2017.01~08	60.06	82.87	97.55	166.94	113.06	97.52	109.98	90.49	83.44	84.77
2017.08	57.30	75.26	90.03	214.67	112.67	92.64	110.72	87.09	74.66	81.27
2017.09	53.73	71.53	84.95	250.81	112.84	91.72	101.35	85.49	71.97	75.79
2017.10	47.07	65.88	81.20	152.00	95.01	83.08	87.21	86.04	70.95	67.62
2017.11	69.07	68.70	89.73	160.03	102.61	94.62	103.81	89.39	81.58	80.15
2017.12	83.25	78.46	104.27	147.31	122.75	115.54	127.92	95.32	90.39	95.16
2018.01~08	61.88	87.27	103.51	161.49	117.50	105.87	124.58	95.73	90.97	91.77
2018.01	66.30	91.56	110.45	137.15	124.02	119.91	142.06	96.23	91.60	98.27
2018.02	64.15	88.33	105.78	151.37	122.64	114.86	135.85	94.59	89.85	95.13
2018.03	69.70	92.77	109.13	158.80	126.92	118.45	132.27	101.25	100.97	100.48
2018.04	55.87	94.53	134.58	156.27	102.86	99.72	107.79	91.18	90.27	89.01
2018.05	55.44	79.13	93.62	158.71	101.60	95.42	106.47	87.37	87.08	80.52
2018.06	61.65	84.10	96.23	217.81	113.92	101.50	116.24	97.21	90.12	88.39
2018.07	61.83	87.04	97.66	180.63	120.06	105.73	127.02	97.95	87.09	91.03
2018.08	61.84	80.51	102.13	188.35	124.92	114.94	127.93	99.52	90.62	89.78

주1) 신재생은 RPS 제외분임

14. 발전회사별 전력구입실적 (1/3)

Power Purchase Results by Companies (1/3)

(단위 : GWh)

구 분	구 입 량							
	한수원	남 동	중 부	서 부	남 부	동 서	기 타	합 계
2014	154,894	63,876	50,181	48,391	56,686	48,550	67,441	490,018
2015	161,402	67,079	43,850	46,112	46,791	46,935	82,945	495,114
2016	158,668	67,721	42,896	48,380	47,969	49,260	93,986	508,879
2017	146,221	66,640	50,254	45,464	47,659	48,307	115,684	520,230
2017.01~08	100,859	43,083	33,596	30,537	31,684	32,259	75,038	347,056
2017.08	11,951	6,225	4,714	4,196	4,777	4,223	10,049	46,135
2017.09	12,076	5,755	3,959	3,540	4,057	3,550	8,144	41,080
2017.10	12,087	5,801	3,721	3,360	3,605	3,411	8,306	40,291
2017.11	11,071	5,586	3,920	3,763	3,783	3,964	11,295	43,382
2017.12	10,129	6,414	5,058	4,264	4,531	5,123	12,901	48,420
2018.01~08	85,167	42,154	32,714	34,485	38,508	34,299	94,372	361,699
2018.01	9,873	6,724	5,254	4,734	5,415	5,475	13,336	50,811
2018.02	8,691	5,992	4,496	3,876	4,837	4,541	11,178	43,609
2018.03	8,977	4,877	3,724	4,408	5,102	4,587	12,165	43,840
2018.04	9,507	3,901	3,511	4,211	4,486	3,739	11,862	41,218
2018.05	11,315	4,383	3,202	4,061	4,124	3,303	11,245	41,632
2018.06	11,043	3,964	3,273	3,880	4,201	3,566	11,215	41,142
2018.07	13,168	6,048	4,402	4,448	5,091	4,452	11,928	49,537
2018.08	12,594	6,266	4,851	4,869	5,251	4,635	11,444	49,911

주1) '07. 2월이후 구역전기사업자 시장구입분 포함
 주2) 기타 : IPP중 전력시장에 참여하고 있는 발전사업자

주3) RPS 제외분임

14. 발전회사별 전력구입실적 (2/3)

Power Purchase Results by Companies (2/3)

(단위 : 억원)

구 분	구 입 금 액							
	한수원	남 동	중 부	서 부	남 부	동 서	기 타	합 계
2014	91,854	43,412	49,238	48,262	61,732	44,273	100,394	439,165
2015	103,935	47,417	38,258	41,150	42,536	39,779	96,436	409,511
2016	109,485	48,468	36,213	41,414	41,554	41,686	86,321	405,141
2017	91,134	51,828	44,096	41,757	43,474	44,516	116,620	433,426
2017.01~08	62,235	35,030	30,634	29,233	29,915	31,209	75,945	294,202
2017.08	7,150	4,400	3,947	3,789	4,339	3,785	10,086	37,496
2017.09	6,712	3,869	3,120	2,980	3,421	3,107	7,924	31,133
2017.10	5,854	3,472	2,710	2,468	2,775	2,602	7,363	27,245
2017.11	7,756	4,034	3,068	2,963	3,028	3,032	10,889	34,770
2017.12	8,577	5,423	4,563	4,113	4,335	4,565	14,499	46,076
2018.01~08	54,691	37,888	31,627	33,801	38,317	33,654	101,968	331,946
2018.01	6,808	6,006	5,359	4,995	5,697	5,792	15,273	49,930
2018.02	5,796	5,075	4,448	4,014	4,924	4,692	12,538	41,488
2018.03	6,466	4,537	3,931	4,675	5,440	4,756	14,247	44,051
2018.04	5,491	5,194	3,350	3,812	4,046	3,209	11,584	36,687
2018.05	6,503	3,414	2,803	3,539	3,730	2,858	10,675	33,522
2018.06	7,043	3,329	3,129	3,641	4,107	3,403	11,711	36,363
2018.07	8,472	5,170	4,291	4,452	5,135	4,534	13,039	45,094
2018.08	8,112	5,163	4,317	4,672	5,237	4,410	12,899	44,810

주1) 거래금액은 제약비양수 정산금(Pumping Coff)이 반영된 금액임

주2) 전력기반기금의 지원금액 제외

14. 발전회사별 전력구입실적 (3/3)

Power Purchase Results by Companies (3/3)

(단위 : 원/kWh)

구 분	구 입 단 가							평 균
	한수원	남 동	중 부	서 부	남 부	동 서	기 타	
2014	59.30	67.96	98.12	99.73	108.90	91.19	148.86	89.62
2015	64.39	70.69	87.25	89.24	90.91	84.75	116.27	82.71
2016	69.00	71.57	84.42	85.60	86.63	84.62	91.84	79.61
2017	62.33	77.77	87.75	91.85	91.22	92.15	100.81	83.31
2017.01~08	61.71	81.31	91.18	95.73	94.42	96.74	101.21	84.77
2017.08	59.83	70.68	83.73	90.29	90.82	89.64	100.37	81.27
2017.09	55.58	67.22	78.82	84.18	84.34	87.52	97.31	75.79
2017.10	48.44	59.86	72.83	73.44	76.98	76.29	88.64	67.62
2017.11	70.06	72.22	78.25	78.75	80.05	76.49	96.40	80.15
2017.12	84.68	84.54	90.23	96.47	95.66	89.12	112.39	95.16
2018.01~08	64.22	89.88	96.68	98.02	99.50	98.12	108.05	91.77
2018.01	68.96	89.32	101.99	105.53	105.20	105.78	114.53	98.27
2018.02	66.69	84.70	98.94	103.58	101.80	103.34	112.17	95.13
2018.03	72.02	93.04	105.55	106.06	106.62	103.68	117.12	100.48
2018.04	57.76	133.14	95.42	90.53	90.19	85.82	97.66	89.01
2018.05	57.48	77.90	87.52	87.16	90.45	86.53	94.94	80.52
2018.06	63.79	83.97	95.59	93.85	97.76	95.42	104.43	88.39
2018.07	64.34	85.49	97.46	100.11	100.86	101.85	109.32	91.03
2018.08	64.41	82.40	89.00	95.95	99.73	95.15	112.72	89.78

15. 전력시장 가격 및 정산단가
Market Price & Unit Cost of Settlement

(단위 : 원/kWh)

구 분	시 장 가 격	가 격 결 정 요 소 별 정 산 단 가			
	S M P	S E P	C P	기 타	계
2014	142.27	69.32	9.11	11.19	89.62
2015	101.76	64.23	9.59	8.89	82.71
2016	77.06	62.12	9.58	7.92	79.61
2017	81.77	59.66	11.82	11.83	83.31
2017.01~08	82.55	60.48	12.31	11.98	84.77
2017.08	76.40	55.77	14.66	10.85	81.27
2017.09	73.21	53.38	11.18	11.23	75.79
2017.10	72.84	50.25	6.08	11.29	67.62
2017.11	81.48	59.90	9.49	10.77	80.15
2017.12	90.77	66.75	15.72	12.69	95.16
2018.01~08	91.42	67.63	12.13	12.01	91.77
2018.01	92.23	67.73	18.13	12.40	98.27
2018.02	90.75	66.95	15.39	12.79	95.13
2018.03	101.47	78.16	11.10	11.23	100.48
2018.04	90.91	68.68	5.08	15.24	89.01
2018.05	87.64	66.41	4.84	9.27	80.52
2018.06	89.79	68.53	9.43	10.43	88.39
2018.07	87.27	62.85	15.18	13.00	91.03
2018.08	91.02	63.05	15.21	11.52	89.78

주1) 가격결정요소 정산단가는 SMP, 정산보정계수 등으로 산출됨

주2) SEP : 가격결정발전계획에 포함되어 발전한 전력량에 대한 정산금

CP : 공급가능용량에 대하여 지급하는 정산금(용량정산금)

기타 : CON, COFF, XPRG, EBCO, A/S 등

주3) RPS 제외분임

16. 전력구입실적 (PPA, 2018년 잠정)

원 별	구 분	단위	2017		2018		증 감 률 (%)		점 유 율 (%)	
			8월	1~8월	8월	1~8월			2018년 8월 기준	
복 합 력	시설용량	MW	2,826	2,826	2,826	2,826	-	-	39.4	
	사업자 수	개	4	4	4	4	-	-	0.0	
	구입전력량	MWh	263,232	4,477,578	490,313	4,986,422	86.3	11.4	50.0	
	구입금액	백만원	48,743	628,412	86,384	733,292	77.2	16.7	56.5	
	단가	원/kWh	185.17	140.35	176.18	147.06	-4.9	4.8	112.9	
구 전 소	시설용량	MW	299	299	325	325	8.8	8.8	4.5	
	사업자 수	개	13	13	13	13	-	-	0.0	
	구입전력량	MWh	-	67,266	-	97,086	-	44.3	0.0	
	구입금액	백만원	-	7,205	-	10,796	-	49.8	0.0	
	단가	원/kWh	-	107.12	-	111.20	-	3.8	0.0	
신 재 생	소 수 력	시설용량	MW	6	6	7	7	15.7	15.7	0.1
		사업자 수	개	29	29	33	33	13.8	13.8	0.1
		구입전력량	MWh	1,779	6,394	1,001	8,457	-43.7	32.3	0.1
		구입금액	백만원	155	437	181	761	16.8	74.1	0.1
		단가	원/kWh	86.89	68.32	180.29	89.93	107.5	31.6	115.5
	바이오 / 폐기물	시설용량	MW	13	13	14	14	6.2	6.2	0.2
		사업자 수	개	32	32	33	33	3.1	3.1	0.1
		구입전력량	MWh	2,879	21,044	2,232	20,370	-22.5	-3.2	0.2
		구입금액	백만원	200	1,761	257	2,064	28.5	17.2	0.2
		단가	원/kWh	69.57	83.66	115.36	101.32	65.8	21.1	73.9
	풍력 / 연료 전지	시설용량	MW	1	1	1	1	77.8	77.8	0.0
		사업자 수	개	5	5	8	8	60.0	60.0	0.0
		구입전력량	MWh	58	77	676	4,361	1075.6	5564.0	0.1
		구입금액	백만원	4	6	78	425	1,836	7201.7	0.1
		단가	원/kWh	70.09	75.53	115.40	97.37	65	28.9	73.9
	태 양 광	시설용량	MW	2,791	2,791	3,996	3,996	43.2	43.2	55.7
		사업자 수	개	24,518	24,518	32,526	32,526	32.7	32.7	99.7
		구입전력량	MWh	327,880	2,579,630	485,428	3,470,667	48.1	34.5	49.6
		구입금액	백만원	32,789	299,094	66,004	400,193	101.3	33.8	43.2
		단가	원/kWh	100.00	115.94	135.97	115.31	36.0	-0.5	87.1
신 재 생 합 계	시설용량	MW	2,810	2,810	4,017	4,017	42.9	42.9	56.0	
	사업자 수	개	24,584	24,584	32,600	32,600	32.6	32.6	99.9	
	구입전력량	MWh	332,595	2,607,144	489,338	3,503,855	47.1	34.4	50.0	
	구입금액	백만원	33,147	301,297	66,520	403,443	100.7	33.9	43.5	
	단가	원/kWh	99.66	115.57	135.94	115.14	36.4	-0.4	87.1	
총 계	시설용량	MW	5,936	5,936	7,169	7,169	20.8	20.8	100.0	
	사업자 수	개	24,601	24,601	32,617	31,027	32.6	26.1	100.0	
	구입전력량	MWh	595,827	7,151,988	979,650	8,587,363	64.4	20.1	100.0	
	구입금액	백만원	81,890	936,914	152,904	1,147,531	86.7	22.5	100.0	
	단가	원/kWh	137.44	131.00	156.08	133.63	13.6	2.0	100.0	

주1) PPA 실적은 익월 확정

주2) 구역전기 : 허가받은 공급구역 내 전기와 열을 동시에 공급

주3) 구입단가의 점유율은 평균 구입단가(기준=100) 대비 비율로 표시

V. 전력 판매

17. 전력판매실적 (종합)
18. 계약종별 (판매량, 호수, 판매수입)
19. 용도별 (판매량, 호수, 판매수입)
20. 행정구역별 (판매량, 호수, 판매수입)
21. 산업분류 및 행정구역별

17. 전력판매실적 종합
Customers and Power Sold

구 분	고객호수 (1,000호)			*요금적용 전 력 (MW)	판 매 량		
	저 압	고 압	계		저 압	고 압	계
2008	18,152	268	18,419	320,352	105,899,262	279,170,875	385,070,137
2009	18,444	283	18,727	327,755	107,171,717	287,302,920	394,474,637
2010	18,929	301	19,229	336,721	114,075,391	320,084,837	434,160,228
2011	19,494	321	19,815	360,388	113,074,851	341,995,410	455,070,261
2012	20,131	345	20,476	369,577	113,901,911	352,691,037	466,592,949
2013	20,648	370	21,018	376,165	113,026,842	361,821,738	474,848,580
2014	21,131	402	21,532	140,036	108,403,354	369,188,347	477,591,701
2015	21,602	428	22,030	142,781	109,711,778	373,943,038	483,654,816
2016	22,097	456	22,553	150,900	112,113,687	384,925,217	497,038,904
2017	22,588	489	23,077	155,122	112,410,997	395,335,389	507,746,386
2017.01~08	22,365	476	22,841	151,566	76,216,513	263,751,217	339,967,730
2017.08	22,365	476	22,841	151,566	10,186,052	35,167,680	45,353,733
2017.09	22,413	480	22,893	152,141	8,926,696	33,409,406	42,336,101
2017.10	22,436	483	22,918	152,968	7,661,819	30,706,986	38,368,804
2017.11	23,005	486	23,492	155,293	8,941,551	32,351,623	41,293,174
2017.12	22,588	489	23,077	155,122	10,664,418	35,116,158	45,780,576
2018.01~08	22,783	515	23,298	159,069	79,544,405	275,674,364	355,218,769
2018.01	22,544	492	23,037	154,823	12,046,124	36,315,617	48,361,741
2018.02	22,580	495	23,075	155,093	12,612,225	34,137,591	46,749,816
2018.03	23,127	498	23,625	157,359	9,897,741	33,038,709	42,936,450
2018.04	22,705	502	23,207	157,874	9,036,602	32,995,949	42,032,551
2018.05	22,666	505	23,172	155,871	7,858,071	32,672,449	40,530,519
2018.06	22,702	508	23,210	156,722	7,967,861	33,077,784	41,045,645
2018.07	22,737	511	23,248	157,412	8,560,585	35,469,365	44,029,950
2018.08	22,783	515	23,298	159,069	11,565,196	37,966,902	49,532,098

주) 요금적용전력 : 순수주택용 및 심야(갑)를 제외한 그 밖의 종별에 있어서 기본요금의 계산기준이 되는 전력

(MWh)	판 매 수 입 (백만원)			판 매 단 가 (원/kWh)			
전년대비(%)	저 압	고 압	계	전년대비(%)	저 압	고 압	계
4.5	9,851,805	20,476,953	30,328,758	5.7	93.03	73.35	78.76
2.4	10,017,898	22,957,121	32,975,019	8.7	93.48	79.91	83.59
10.1	10,961,119	26,428,952	37,390,071	13.4	96.09	82.57	86.12
4.8	11,134,184	29,512,868	40,647,051	8.7	98.47	86.30	89.32
2.5	11,965,669	34,272,151	46,237,820	13.8	105.05	97.17	99.10
1.8	12,562,775	37,925,598	50,488,373	9.2	111.15	104.82	106.33
0.6	12,579,344	40,564,727	53,144,071	5.3	116.04	109.88	111.28
1.3	12,738,706	41,224,980	53,963,686	1.5	116.11	110.24	111.57
2.8	12,969,536	42,317,987	55,287,523	2.5	115.68	109.94	111.23
2.2	12,565,544	43,048,467	55,614,011	0.6	111.78	108.89	109.53
1.9	8,588,483	29,036,342	37,624,825	-0.1	112.69	110.09	110.67
2.1	1,308,028	4,264,659	5,572,686	-2.3	128.41	121.27	122.87
2.7	1,040,493	3,349,838	4,390,331	7.4	116.56	100.27	103.70
-0.5	807,127	2,905,292	3,712,420	-2.4	105.34	94.61	96.76
2.6	936,982	3,730,287	4,667,269	0.5	104.79	115.30	113.03
5.2	1,192,458	4,026,708	5,219,166	2.2	111.82	114.67	114.00
4.5	8,970,298	30,130,918	39,101,216	3.9	112.77	109.30	110.08
7.0	1,338,878	4,185,700	5,524,578	7.2	111.15	115.26	114.23
5.2	1,396,101	3,930,558	5,326,659	3.8	110.69	115.14	113.94
0.9	1,047,829	3,262,146	4,309,975	2.0	105.87	98.74	100.38
2.9	917,269	3,148,556	4,065,825	2.8	101.51	95.42	96.73
4.6	826,372	3,093,074	3,919,445	3.6	105.16	94.67	96.70
3.5	903,859	3,747,281	4,651,140	1.6	113.44	113.29	113.32
1.9	1,082,185	4,240,826	5,323,012	1.9	126.41	119.56	120.90
9.2	1,457,804	4,522,777	5,980,581	7.3	126.05	119.12	120.74

18. 계약종별 판매량
Power Sold by Segments

구 분	주 택 용 (증감률)	일 반 용 (증감률)	교 육 용 (증감률)	산 업 용 (증감률)
2008	57,877,514 3.9	86,827,003 5.6	5,783,324 9.0	203,474,609 4.4
2009	59,427,250 2.7	89,619,320 3.2	6,465,449 11.8	207,215,867 1.8
2010	63,199,602 6.3	97,410,032 8.7	7,452,576 15.3	232,672,176 12.3
2011	63,523,655 0.5	99,504,065 2.1	7,568,016 1.5	251,490,648 8.1
2012	65,483,733 3.1	101,592,760 2.1	7,860,449 3.9	258,101,933 2.6
2013	65,814,572 0.5	102,196,338 0.6	7,947,317 1.1	265,372,531 2.8
2014	64,457,263 -2.1	100,760,879 -1.4	7,438,374 -6.4	272,551,573 2.7
2015	65,618,610 1.8	103,679,346 2.9	7,690,600 3.4	273,547,997 0.4
2016	68,056,786 3.7	108,616,888 4.8	8,079,392 5.1	278,827,855 1.9
2017	68,543,760 0.7	111,297,776 2.5	8,316,290 2.9	285,969,563 2.6
2017.01~08	46,219,365 0.9	75,231,075 2.2	5,531,719 2.3	190,041,030 2.4
2017.08	7,178,603 0.1	11,069,642 1.0	679,138 2.6	24,310,597 3.7
2017.09	5,845,405 -5.1	9,553,092 -0.6	660,478 0.6	24,259,509 7.0
2017.10	5,150,467 1.1	7,942,894 0.0	506,575 -4.7	22,845,707 -1.1
2017.11	5,467,026 1.3	8,318,063 2.3	647,233 -0.1	23,856,131 3.1
2017.12	5,861,497 4.6	10,252,652 10.3	970,285 15.9	24,967,186 2.7
2018.01~08	49,481,483 7.1	80,391,860 6.9	5,911,642 6.9	195,544,757 2.9
2018.01	6,332,809 5.7	11,461,392 11.6	961,968 18.6	25,319,198 4.9
2018.02	6,424,302 5.6	11,591,616 11.1	932,289 15.6	23,299,768 2.0
2018.03	5,493,719 4.3	9,222,230 3.0	763,361 -0.2	23,951,281 -0.5
2018.04	5,621,765 2.0	8,589,889 2.9	661,056 -0.5	24,286,864 4.3
2018.05	5,267,406 3.4	8,100,094 4.7	549,391 7.6	24,393,927 4.9
2018.06	5,432,409 4.8	8,937,372 5.6	601,962 2.7	24,035,096 2.6
2018.07	6,058,032 2.5	10,149,480 2.0	703,825 -0.7	25,138,638 1.7
2018.08	8,851,041 23.3	12,339,788 11.5	737,789 8.6	25,119,985 3.3

주) 증감률은 전년동기 대비

(단위 : MWh, %)

농 사 용 (증감률)		가 로 등 (증감률)		심 야 (증감률)		계	(증감률)
8,869,459	8.0	2,847,241	1.9	19,390,987	-0.4	385,070,137	4.5
9,671,357	9.0	2,954,231	3.8	19,121,163	-1.4	394,474,637	2.4
10,654,295	10.2	3,081,490	4.3	19,690,056	3.0	434,160,228	10.1
11,231,538	5.4	3,145,498	2.1	18,606,840	-5.5	455,070,261	4.8
12,776,045	13.8	3,158,091	0.4	17,619,937	-5.3	466,592,949	2.5
13,865,837	8.5	3,156,226	-0.1	16,495,759	-6.4	474,848,580	1.8
14,504,731	4.6	3,221,008	2.1	14,657,873	-11.1	477,591,701	0.6
15,702,468	8.3	3,341,240	3.7	14,074,556	-4.0	483,654,816	1.3
16,579,843	5.6	3,462,314	3.6	13,415,826	-4.7	497,038,904	2.8
17,250,850	4.0	3,556,775	2.7	12,811,372	-4.5	507,746,386	2.2
11,371,196	4.0	2,306,177	3.0	9,267,169	-6.3	339,967,730	1.9
1,463,315	-3.0	268,178	2.1	384,260	-4.8	45,353,733	2.1
1,361,333	-5.9	284,606	2.7	371,678	1.0	42,336,101	2.7
1,143,337	3.2	303,997	2.8	475,826	-0.4	38,368,804	-0.5
1,712,545	7.2	324,830	2.3	967,347	-5.8	41,293,174	2.6
1,662,440	11.6	337,165	1.3	1,729,352	4.5	45,780,576	5.2
12,300,863	8.2	2,332,769	1.2	9,255,393	-0.1	355,218,769	4.5
1,841,471	11.5	342,722	1.2	2,102,181	5.5	48,361,741	7.0
1,941,556	10.5	324,590	1.5	2,235,691	2.0	46,749,816	5.2
1,568,362	4.1	299,774	1.0	1,637,722	-2.5	42,936,450	0.9
1,400,540	2.0	295,190	1.4	1,177,247	-11.8	42,032,551	3.0
1,174,852	3.5	272,122	0.1	772,728	2.7	40,530,519	4.6
1,257,092	1.0	264,162	0.6	517,551	2.6	41,045,645	3.5
1,293,885	4.3	257,956	0.4	428,134	0.2	44,029,950	1.9
1,823,105	24.6	276,251	3.0	384,138	0.0	49,532,098	9.2

18-1. 계약종별 수용호수
Power Sold by Segments

구 분	주 택 용 (증감률)		일 반 용 (증감률)		교 육 용 (증감률)		산 업 용 (증감률)	
	수량	증감률	수량	증감률	수량	증감률	수량	증감률
2008	12,553,340	1.3	2,503,422	2.1	33,703	3.2	329,458	2.0
2009	12,682,652	1.0	2,552,298	2.0	33,907	0.6	337,683	2.5
2010	12,904,238	1.7	2,632,860	3.2	34,376	1.4	348,096	3.1
2011	13,181,372	2.1	2,710,906	3.0	34,625	0.7	358,220	2.9
2012	13,514,464	2.5	2,817,597	3.9	34,788	0.5	367,888	2.7
2013	13,822,791	2.3	2,893,935	2.7	19,912	-42.8	377,411	2.6
2014	14,117,408	2.1	2,954,628	2.1	20,217	1.5	387,533	2.7
2015	14,419,050	2.1	3,016,678	2.1	20,489	1.3	396,862	2.4
2016	14,728,391	2.1	3,088,632	2.4	20,663	0.8	405,771	2.2
2017	15,085,547	2.4	3,115,221	0.9	20,972	1.5	413,877	2.0
2017.08	14,976,433	2.4	3,095,219	1.2	20,932	1.5	411,719	2.3
2017.09	15,012,379	2.4	3,096,919	1.1	20,953	1.6	412,344	2.2
2017.10	15,031,977	2.4	3,097,088	1.0	20,951	1.6	412,837	2.1
2017.11	15,061,771	2.4	3,103,677	0.9	20,960	1.5	413,470	2.1
2017.12	15,085,547	2.4	3,115,221	0.9	20,972	1.5	413,877	2.0
2018.01	15,107,320	2.3	3,123,469	1.3	20,987	1.2	414,519	2.0
2018.02	15,127,478	2.2	3,128,777	1.5	21,049	0.7	415,128	2.0
2018.03	15,142,821	2.1	3,128,977	1.6	21,068	0.5	415,509	1.9
2018.04	15,164,904	2.1	3,133,087	1.7	21,050	0.6	416,190	1.8
2018.05	15,181,226	2.0	3,135,303	1.8	21,030	0.5	417,010	1.9
2018.06	15,198,387	1.9	3,139,999	1.8	21,020	0.5	417,692	1.9
2018.07	15,218,750	1.8	3,144,810	1.8	21,005	0.4	418,405	1.8
2018.08	15,234,214	1.7	3,153,044	1.9	21,002	0.3	419,095	1.8

주) 증감률은 전년동기 대비

(단위 : 호, %)

농 사 용 (증감률)		가 로 등 (증감률)		심 야 (증감률)		계	(증감률)
1,195,544	4.6	883,533	7.6	920,048	5.1	18,419,048	2.1
1,200,032	0.4	985,102	11.5	935,737	1.7	18,727,411	1.7
1,260,276	5.0	1,117,657	13.5	931,947	-0.4	19,229,450	2.7
1,335,748	6.0	1,271,913	13.8	922,082	-1.1	19,814,866	3.0
1,432,599	7.3	1,398,414	9.9	910,149	-1.3	20,475,899	3.3
1,495,113	4.4	1,511,494	8.1	897,037	-1.4	21,017,693	2.6
1,565,503	4.7	1,604,510	6.2	882,470	-1.6	21,532,269	2.4
1,638,132	4.6	1,672,745	4.3	866,259	-1.8	22,030,215	2.3
1,710,781	4.4	1,751,669	4.7	846,812	-2.2	22,552,719	2.4
1,784,191	4.3	1,830,973	4.5	826,242	-2.4	23,077,023	2.3
1,686,661	4.4	1,818,703	5.5	831,528	-2.4	22,841,195	2.4
1,694,900	4.4	1,825,153	5.7	830,355	-2.3	22,893,003	2.4
1,698,970	4.3	1,828,193	5.6	828,422	-2.4	22,918,438	2.4
2,234,642	3.7	1,829,619	5.4	827,460	-2.4	23,491,599	2.4
1,784,191	4.3	1,830,973	4.5	826,242	-2.4	23,077,023	2.3
1,701,005	4.4	1,844,535	4.6	824,721	-2.4	23,036,557	2.3
1,700,712	4.4	1,858,576	4.9	823,016	-2.5	23,074,737	2.3
2,240,130	3.9	1,855,339	4.5	821,130	-2.5	23,624,976	2.2
1,792,838	3.9	1,859,965	4.6	818,947	-2.6	23,206,982	2.2
1,724,503	4.1	1,876,682	5.2	816,109	-2.6	23,171,864	2.2
1,732,789	3.9	1,886,840	5.5	813,575	-2.7	23,210,302	2.1
1,740,221	3.7	1,893,962	5.0	810,693	-2.8	23,247,846	2.0
1,750,210	3.8	1,912,507	5.2	807,968	-2.8	23,298,040	2.0

18-2. 계약종별 판매수입
Revenues from Sales by Segments

구 분	주 택 용 (증감률)		일 반 용 (증감률)		교 육 용 (증감률)		산 업 용 (증감률)	
	액	률	액	률	액	률	액	률
2008	6,654,217	4.5	8,274,673	3.0	454,427	11.0	13,477,191	7.1
2009	6,801,454	2.2	8,827,082	6.7	540,273	18.9	15,270,617	13.3
2010	7,574,769	11.4	9,637,138	9.2	650,061	20.3	17,830,665	16.8
2011	7,621,964	0.6	10,118,764	5.0	712,751	9.6	20,428,280	14.6
2012	8,099,666	6.3	11,428,850	12.9	855,547	20.0	23,959,882	17.3
2013	8,359,482	3.2	12,466,202	9.1	921,824	7.7	26,723,313	11.5
2014	8,066,377	-3.5	13,073,321	4.9	849,079	-7.9	29,116,999	9.0
2015	8,116,165	0.6	13,526,416	3.5	870,692	2.5	29,382,566	0.9
2016	8,270,443	1.9	14,164,678	4.7	900,914	3.5	29,866,595	1.6
2017	7,437,259	-10.1	14,515,430	2.5	857,124	-4.9	30,715,446	2.8
2017.01~08	5,089,036	-14.4	9,889,975	2.2	574,901	-5.0	20,637,602	3.3
2017.08	914,770	-20.2	1,568,509	0.3	82,834	-2.3	2,880,569	3.5
2017.09	633,586	29.7	1,215,767	1.1	70,477	-4.4	2,349,741	6.8
2017.10	511,163	-4.8	925,150	-0.3	47,803	-16.2	2,110,234	-2.5
2017.11	567,187	-11.9	1,104,006	2.6	69,022	-7.4	2,755,279	2.9
2017.12	636,287	-2.9	1,380,532	7.6	94,921	5.0	2,862,591	0.5
2018.01~08	5,453,675	7.2	10,486,152	6.0	619,314	7.7	21,060,626	2.0
2018.01	721,839	7.1	1,499,597	9.5	95,149	18.3	2,925,770	5.8
2018.02	739,366	6.9	1,512,490	9.2	93,206	15.7	2,685,522	-0.2
2018.03	565,797	6.5	1,136,612	3.0	76,406	3.1	2,312,708	0.6
2018.04	587,069	1.6	1,000,661	4.3	61,310	2.2	2,249,709	3.0
2018.05	528,194	3.6	951,857	3.6	51,130	8.3	2,254,814	3.5
2018.06	560,090	6.0	1,184,577	3.7	68,521	3.1	2,715,683	-0.2
2018.07	677,098	2.4	1,477,650	2.4	84,111	1.0	2,963,121	1.6
2018.08	1,074,221	17.4	1,722,708	9.8	89,481	8.0	2,953,301	2.5

주) 증감률은 전년동기 대비, '02. 1월부터 전력산업기반기금 제외

(단위 : 백만원, %)

농 사 용 (증감률)		가 로 등 (증감률)		심 야 (증감률)		계 (증감률)	
375,931	7.8	206,419	3.4	885,900	16.9	30,328,758	5.7
407,448	8.4	226,431	9.7	901,714	1.8	32,975,019	8.7
453,201	11.2	250,010	10.4	994,228	10.3	37,390,071	13.4
479,851	5.9	274,239	9.7	1,011,203	1.7	40,647,051	8.7
548,102	14.2	312,299	13.9	1,033,475	2.2	46,237,820	13.8
630,971	15.1	338,754	8.5	1,047,827	1.4	50,488,373	9.2
686,214	8.8	365,234	7.8	986,847	-5.8	53,144,071	5.3
742,907	8.3	378,804	3.7	946,137	-4.1	53,963,686	1.5
786,032	5.8	392,457	3.6	906,404	-4.2	55,287,523	2.5
820,635	4.4	403,631	2.8	864,486	-4.6	55,614,011	0.6
544,413	4.2	266,894	3.1	622,005	-6.5	37,624,825	-0.1
69,706	-0.3	31,900	2.3	24,399	-4.9	5,572,686	-2.3
65,585	-2.9	32,707	2.4	22,469	0.1	4,390,331	7.4
57,172	3.7	33,477	2.8	27,421	0.0	3,712,420	-2.4
74,358	6.8	35,013	2.5	62,404	-5.7	4,667,269	0.5
79,107	10.8	35,540	1.7	130,188	4.3	5,219,166	2.2
586,024	7.6	270,457	1.3	624,967	0.5	39,101,216	3.9
87,688	10.7	36,509	2.0	158,027	5.5	5,524,578	7.2
91,873	10.2	36,134	1.8	168,066	1.9	5,326,659	3.8
75,519	4.3	33,756	1.4	109,177	-2.2	4,309,975	2.0
68,236	2.8	34,350	1.5	64,489	-11.7	4,065,825	2.8
57,460	3.9	32,778	0.6	43,212	2.6	3,919,445	3.6
59,556	2.6	32,595	0.4	30,118	2.1	4,651,140	1.6
62,583	4.3	31,666	0.5	26,783	0.4	5,323,012	1.9
83,109	19.2	32,669	2.4	25,093	2.8	5,980,581	7.3

19. 용도별 판매량

Power Sold by Use & Industry

구 분	가정용 (증감률)		공공 및 서비스부문					
			공공용 (증감률)		서비스업 (증감률)		소 계 (증감률)	
2008	56,227,938	3.8	16,577,299	6.4	117,635,066	4.5	134,212,366	4.7
2009	57,595,481	2.4	17,932,259	8.2	121,202,975	3.0	139,135,233	3.7
2010	61,194,167	6.2	19,871,542	10.8	129,923,068	7.2	149,794,610	7.7
2011	61,564,249	0.6	20,539,309	3.4	130,762,275	0.6	151,301,584	1.0
2012	63,536,150	3.2	21,422,340	4.3	132,498,775	1.3	153,921,115	1.7
2013	63,970,472	0.7	21,982,156	2.6	132,054,876	-0.3	154,037,032	0.1
2014	62,675,310	-2.0	21,669,253	-1.4	128,629,516	-2.6	150,298,770	-2.4
2015	63,794,044	1.8	22,178,572	2.4	132,049,197	2.7	154,227,769	2.6
2016	66,173,065	3.7	22,908,419	3.3	137,982,086	4.5	160,890,505	4.3
2017	66,517,357	0.5	23,604,528	3.0	140,952,297	2.2	164,556,825	2.3
2017.01~08	44,876,716	0.8	15,838,211	2.3	95,291,865	1.5	111,130,076	1.6
2017.08	6,973,292	0.0	2,081,653	2.2	12,886,528	1.4	14,968,180	1.5
2017.09	5,664,935	-5.4	1,891,448	1.0	11,433,383	0.7	13,324,831	0.8
2017.10	4,994,141	0.9	1,622,337	1.4	9,970,487	1.3	11,592,824	1.3
2017.11	5,302,270	1.0	1,842,265	2.7	10,795,087	2.3	12,637,352	2.4
2017.12	5,679,295	4.2	2,410,267	11.5	13,461,475	9.1	15,871,742	9.4
2018.01~08	47,985,264	6.9	16,716,595	5.5	101,214,715	6.2	117,931,310	6.1
2018.01	6,136,057	5.5	2,512,534	12.0	14,988,553	10.1	17,501,087	10.4
2018.02	6,221,352	5.3	2,459,523	10.6	15,137,738	9.3	17,597,261	9.5
2018.03	5,325,911	4.1	2,087,112	1.5	12,241,877	3.0	14,328,989	2.8
2018.04	5,452,621	1.9	1,870,357	0.2	11,237,134	2.2	13,107,492	1.9
2018.05	5,108,532	3.2	1,697,216	5.7	10,408,427	5.2	12,105,642	5.2
2018.06	5,264,769	4.7	1,797,238	3.6	10,936,353	5.7	12,733,592	5.4
2018.07	5,871,826	2.4	2,040,130	0.6	12,061,724	2.1	14,101,854	1.9
2018.08	8,604,195	23.4	2,252,486	8.2	14,202,908	10.2	16,455,394	9.9

주) 증감률은 전년동기 대비

(단위 : MWh, %)

농수산업(증감률)		생 산 부 문						합 계 (증감률)	
		광 업 (증감률)		제조업 (증감률)		소 계 (증감률)			
8,388,827	7.6	1,446,109	-2.6	184,794,897	4.4	194,629,833	4.5	385,070,137	4.5
9,144,527	9.0	1,350,156	-6.6	187,249,239	1.3	197,743,923	1.6	394,474,637	2.4
10,041,853	9.8	1,682,954	24.6	211,446,643	12.9	223,171,451	12.9	434,160,228	10.1
10,574,980	5.3	1,928,241	14.6	229,701,207	8.6	242,204,428	8.5	455,070,261	4.8
12,074,001	14.2	1,616,370	-16.2	235,445,313	2.5	249,135,684	2.9	466,592,949	2.5
13,061,607	8.2	1,478,043	-8.6	242,301,427	2.9	256,841,077	3.1	474,848,580	1.8
13,556,457	3.8	1,570,929	6.3	249,490,235	3.0	264,617,621	3.0	477,591,701	0.6
14,644,964	8.0	1,630,853	3.8	249,357,185	-0.1	265,633,002	0.4	483,654,815	1.3
15,396,810	5.1	1,754,503	7.6	252,824,020	1.4	269,975,334	1.6	497,038,904	2.8
15,981,131	3.8	1,746,244	-0.5	258,944,828	2.4	276,672,203	2.5	507,746,386	2.2
10,572,411	3.7	1,250,663	9.8	172,137,864	2.3	183,960,938	2.4	339,967,730	1.9
1,327,537	-3.7	113,646	-21.1	21,971,077	3.8	23,412,260	3.2	45,353,733	2.1
1,233,218	-6.9	122,378	-12.4	21,990,739	7.1	23,346,336	6.2	42,336,101	2.7
1,031,663	2.7	107,854	-27.0	20,642,321	-1.7	21,781,839	-1.7	38,368,804	-0.5
1,592,970	7.1	131,846	-17.5	21,628,735	2.9	23,353,552	3.1	41,293,174	2.6
1,550,869	11.9	133,502	-20.8	22,545,168	2.4	24,229,539	2.8	45,780,576	5.2
11,426,011	8.1	972,045	-22.3	176,904,139	2.8	189,302,195	2.9	355,218,769	4.5
1,734,393	11.8	124,326	-18.4	22,865,879	4.8	24,724,598	5.1	48,361,741	7.0
1,839,290	10.5	113,269	-20.9	20,978,644	1.7	22,931,203	2.2	46,749,816	5.2
1,477,822	3.8	121,598	-23.4	21,682,129	-1.1	23,281,550	-0.9	42,936,450	0.9
1,299,131	1.3	125,971	-19.8	22,047,337	4.2	23,472,438	3.9	42,032,551	3.0
1,082,535	2.9	123,668	-19.6	22,110,143	4.9	23,316,345	4.6	40,530,519	4.6
1,156,084	0.5	123,942	-51.7	21,767,258	2.9	23,047,284	2.1	41,045,645	3.5
1,169,275	4.3	121,525	5.3	22,765,469	1.7	24,056,270	1.8	44,029,950	1.9
1,667,481	25.6	117,746	3.6	22,687,280	3.3	24,472,508	4.5	49,532,098	9.2

19-1. 용도별 수용호수
Power Sold by Use & Industry

구 분	가정용 (증감률)		공 공 및 서 비 스 부 문					
			공공용 (증감률)		서비스업 (증감률)		소 계 (증감률)	
2008	11,223,108	0.9	151,443	1.3	5,628,622	4.3	5,780,065	4.3
2009	11,298,003	0.7	155,654	2.8	5,851,575	4.0	6,007,229	3.9
2010	11,485,770	1.7	162,260	4.2	6,094,798	4.2	6,257,058	4.2
2011	11,742,234	2.2	168,155	3.6	6,337,426	4.0	6,505,581	4.0
2012	12,170,299	3.6	172,056	2.3	6,465,907	2.0	6,637,963	2.0
2013	12,468,753	2.5	178,004	3.5	6,636,398	2.6	6,814,402	2.7
2014	12,721,502	2.0	186,288	4.7	6,818,303	2.7	7,004,591	2.8
2015	12,969,708	2.0	196,858	5.7	6,987,499	2.5	7,184,357	2.6
2016	13,226,162	2.0	210,088	6.7	7,170,567	2.6	7,380,655	2.7
2017	13,479,459	1.9	208,780	-0.6	7,373,260	2.8	7,582,040	2.7
2017.08	13,399,901	2.0	216,864	5.5	7,304,603	2.9	7,521,467	2.9
2017.09	13,425,203	2.0	206,360	-0.1	7,333,823	3.1	7,540,183	3.0
2017.10	13,437,667	2.0	207,023	-0.3	7,342,475	3.0	7,549,498	2.9
2017.11	13,458,698	2.0	208,026	-0.3	7,358,679	3.0	7,566,705	2.9
2017.12	13,479,459	1.9	208,780	-0.6	7,373,260	2.8	7,582,040	2.7
2018.01	13,496,523	1.8	210,112	-0.7	7,397,722	2.9	7,607,834	2.8
2018.02	13,508,448	1.8	211,410	-0.4	7,422,715	3.1	7,634,125	3.0
2018.03	13,510,366	1.6	211,685	-0.5	7,431,556	3.0	7,643,241	2.9
2018.04	13,517,411	1.5	212,110	-0.2	7,453,264	3.1	7,665,374	3.0
2018.05	13,527,130	1.5	212,952	-0.1	7,476,352	3.3	7,689,304	3.2
2018.06	13,537,692	1.4	213,804	-0.2	7,495,614	3.3	7,709,418	3.2
2018.07	13,551,605	1.3	214,814	-0.5	7,511,314	3.2	7,726,128	3.1
2018.08	13,565,802	1.2	215,894	-0.4	7,536,529	3.2	7,752,423	3.1

주) 증감률은 전년동기 대비

(단위 : 호, %)

생 산 부 문								합 계 (증감률)	
농수산업(증감률)		광 업 (증감률)		제조업 (증감률)		소 계 (증감률)			
1,172,187	4.2	2,106	-19.7	241,582	-1.8	1,415,875	3.1	18,419,048	2.1
1,172,664	0.0	2,389	13.4	247,126	2.3	1,422,179	0.4	18,727,411	1.7
1,228,777	4.8	2,679	12.1	255,166	3.3	1,486,622	4.5	19,229,450	2.7
1,300,303	5.8	2,935	9.6	263,813	3.4	1,567,051	5.4	19,814,866	3.0
1,391,907	7.0	3,194	8.8	272,536	3.3	1,667,637	6.4	20,475,899	3.3
1,450,139	4.2	3,432	7.5	280,967	3.1	1,734,538	4.0	21,017,693	2.6
1,513,711	4.4	3,633	5.9	288,832	2.8	1,806,176	4.1	21,532,269	2.4
1,576,983	4.2	3,738	2.9	295,429	2.3	1,876,150	3.9	22,030,215	2.3
1,640,563	4.0	3,857	3.2	301,482	2.0	1,945,902	3.7	22,552,719	2.4
1,705,589	4.0	3,044	-21.1	306,891	1.8	2,015,524	3.6	23,077,023	2.3
1,611,431	4.0	3,045	-20.6	305,351	2.1	1,919,827	3.7	22,841,195	2.4
1,618,840	4.0	3,052	-20.8	305,725	2.0	1,927,617	3.6	22,893,003	2.4
1,622,235	3.9	3,050	-21.0	305,988	1.9	1,931,273	3.6	22,918,438	2.4
2,156,785	3.4	3,049	-20.9	306,362	1.8	2,466,196	3.2	23,491,599	2.4
1,705,589	4.0	3,044	-21.1	306,891	1.8	2,015,524	3.6	23,077,023	2.3
1,621,908	4.1	3,034	-21.5	307,258	1.7	1,932,200	3.6	23,036,557	2.3
1,621,394	4.0	3,028	-21.5	307,742	1.7	1,932,164	3.6	23,074,737	2.3
2,160,510	3.7	3,017	-21.9	307,842	1.6	2,471,369	3.3	23,624,976	2.2
1,712,969	3.5	3,025	-22.2	308,203	1.5	2,024,197	3.2	23,206,982	2.2
1,644,019	3.8	3,035	-22.1	308,376	1.5	1,955,430	3.4	23,171,864	2.2
1,651,444	3.6	3,028	-37.1	308,720	1.8	1,963,192	3.2	23,210,302	2.1
1,658,046	3.4	3,015	-0.5	309,052	1.4	1,970,113	3.1	23,247,846	2.0
1,667,277	3.5	3,010	-1.1	309,528	1.4	1,979,815	3.1	23,298,040	2.0

19-2. 용도별 판매수입
Power Sold by Use & Industry

구 분	가정용 (증감률)		공공 및 서비스부문					
			공공용 (증감률)		서비스업 (증감률)		소 계 (증감률)	
2008	6,479,036	4.4	1,303,614	6.3	9,968,824	4.4	11,272,438	4.6
2009	6,613,497	2.1	1,480,245	13.5	10,619,475	6.5	12,099,720	7.3
2010	7,357,877	11.3	1,687,900	14.0	11,592,833	9.2	13,280,733	9.8
2011	7,410,428	0.7	1,841,950	9.1	12,123,243	4.6	13,965,193	5.2
2012	7,881,562	6.4	2,180,065	18.4	13,638,488	12.5	15,818,554	13.3
2013	8,112,037	2.9	2,430,882	11.5	14,814,959	8.6	17,245,842	9.0
2014	7,827,744	-3.5	2,508,151	3.2	15,457,321	4.3	17,965,473	4.2
2015	7,870,506	0.5	2,601,869	3.7	16,018,006	3.6	18,619,874	3.6
2016	8,018,073	1.9	2,689,381	3.4	16,803,509	4.9	19,492,890	4.7
2017	7,217,140	-10.0	2,704,964	0.6	17,170,717	2.2	19,875,681	2.0
2017.01~08	4,942,834	-14.3	1,824,024	0.2	11,683,226	1.8	13,507,249	1.6
2017.08	890,624	-20.1	268,966	0.4	1,754,196	0.5	2,023,162	0.5
2017.09	613,908	31.2	214,426	-0.5	1,384,151	1.8	1,598,577	1.5
2017.10	494,991	-4.6	168,853	-3.9	1,099,127	0.3	1,267,980	-0.3
2017.11	549,798	-12.0	224,402	2.7	1,329,101	2.2	1,553,503	2.2
2017.12	615,609	-3.4	273,259	5.3	1,675,112	6.9	1,948,372	6.7
2018.01~08	5,283,694	6.9	1,931,030	5.9	12,362,143	5.8	14,293,173	5.8
2018.01	698,239	6.5	285,763	11.8	1,820,576	9.0	2,106,339	9.4
2018.02	714,462	6.3	280,799	9.7	1,830,489	8.2	2,111,288	8.4
2018.03	547,628	6.4	221,034	2.9	1,389,434	3.5	1,610,469	3.4
2018.04	568,671	1.4	191,056	2.3	1,212,704	4.1	1,403,760	3.8
2018.05	511,518	3.3	176,749	5.5	1,142,436	3.9	1,319,185	4.1
2018.06	542,388	5.9	220,841	2.7	1,380,178	3.8	1,601,019	3.7
2018.07	656,546	2.2	264,933	2.1	1,671,598	2.5	1,936,531	2.5
2018.08	1,044,240	17.2	289,855	7.8	1,914,728	9.2	2,204,584	9.0

주) 증감률은 전년동기 대비

(단위 : 백만원, %)

농수산업(증감률)		생 산 부 문				소 계 (증감률)		합 계 (증감률)	
		광 업 (증감률)		제조업 (증감률)					
360,411	7.2	115,261	-0.7	12,101,612	7.5	12,577,284	7.4	30,328,758	5.7
390,498	8.3	123,177	6.9	13,748,128	13.6	14,261,803	13.4	32,975,019	8.7
433,119	10.9	154,192	25.2	16,164,149	17.6	16,751,461	17.5	37,390,071	13.4
458,683	5.9	182,590	18.4	18,630,157	15.3	19,271,430	15.0	40,647,051	8.7
526,500	14.8	188,667	3.3	21,822,537	17.1	22,537,704	16.9	46,237,820	13.8
604,890	14.9	189,325	0.3	24,336,280	11.5	25,130,495	11.5	50,488,373	9.2
652,573	7.9	211,791	11.9	26,486,491	8.8	27,350,854	8.8	53,144,071	5.3
704,320	7.9	218,885	3.3	26,550,096	0.2	27,473,302	0.4	53,963,682	1.5
743,146	5.5	231,245	5.6	26,802,170	0.9	27,776,561	1.1	55,287,523	2.5
773,427	4.1	231,032	-0.1	27,516,730	2.7	28,521,189	2.7	55,614,011	0.6
515,113	3.9	165,718	9.4	18,493,910	3.2	19,174,741	3.2	37,624,825	-0.1
64,844	-0.8	17,718	-18.0	2,576,337	3.5	2,658,900	3.2	5,572,686	-2.3
60,731	-3.6	15,446	-12.6	2,101,670	7.0	2,177,846	6.5	4,390,331	7.4
52,784	3.0	13,147	-23.2	1,883,519	-3.1	1,949,449	-3.1	3,712,420	-2.4
69,800	6.4	18,068	-16.5	2,476,100	2.7	2,563,968	2.6	4,667,269	0.5
74,999	10.9	18,653	-20.1	2,561,532	0.3	2,655,185	0.4	5,219,166	2.2
554,106	7.6	132,572	-20.0	18,837,672	1.9	19,524,349	1.8	39,101,216	3.9
83,827	10.8	17,610	-17.7	2,618,563	5.8	2,720,000	5.7	5,524,578	7.2
88,224	10.2	16,407	-19.7	2,396,278	-0.7	2,500,909	-0.5	5,326,659	3.8
72,068	4.1	14,842	-20.9	2,064,968	0.0	2,151,878	-0.1	4,309,975	2.0
64,233	2.2	14,827	-18.2	2,014,335	2.7	2,093,394	2.5	4,065,825	2.8
54,130	3.9	14,518	-18.3	2,020,094	3.5	2,088,742	3.3	3,919,445	3.6
55,891	2.3	17,517	-47.8	2,434,325	0.0	2,507,733	-0.5	4,651,140	1.6
58,202	4.4	18,670	4.0	2,653,063	1.4	2,729,935	1.4	5,323,012	1.9
77,530	19.6	18,181	2.6	2,636,047	2.3	2,731,757	2.7	5,980,581	7.3

20. 행정구역별 판매량
Power Sold by Province

구 분	서 울	부 산	대 구	인 천	광 주	대 전	울 산	경 기	강 원
2008	44,096,350	18,709,380	13,265,254	19,915,366	7,044,868	8,087,633	24,132,175	81,848,570	13,895,753
2009	44,984,457	18,689,437	13,133,729	20,032,122	7,169,715	8,224,741	24,682,548	83,743,497	13,992,115
2010	47,295,093	20,263,682	14,479,996	21,827,577	7,860,057	8,867,405	26,515,702	93,074,875	14,848,027
2011	46,902,990	20,561,980	14,821,948	22,241,135	8,047,388	9,059,777	28,198,242	96,844,504	15,876,041
2012	47,234,102	20,664,842	14,954,958	22,651,946	8,130,493	9,160,107	29,362,724	100,291,952	15,904,382
2013	46,555,105	20,364,705	15,080,052	22,673,441	8,274,074	9,225,140	29,992,969	102,227,067	15,794,741
2014	45,018,862	19,980,898	14,858,786	22,578,048	8,197,276	9,102,524	30,115,124	102,180,707	15,778,145
2015	45,381,484	20,002,307	14,947,708	23,211,766	8,333,873	9,182,737	30,286,140	105,048,003	16,206,618
2016	46,493,234	20,467,093	15,268,114	23,875,857	8,558,369	9,379,633	32,095,217	109,403,901	16,498,768
2017	46,298,158	21,007,358	15,386,372	24,515,313	8,683,649	9,423,804	31,609,850	114,847,859	16,552,771
2017.01~08	31,345,801	14,063,579	10,394,804	16,454,673	5,862,457	6,388,957	21,076,287	76,646,546	11,066,076
2017.08	4,733,095	1,979,171	1,413,997	2,225,964	833,272	895,488	2,782,576	10,298,534	1,309,951
2017.09	3,998,064	1,848,565	1,306,140	2,043,139	758,365	787,503	2,706,478	9,494,123	1,242,820
2017.10	3,329,882	1,569,820	1,107,848	1,820,833	631,753	680,663	2,617,830	8,547,612	1,228,640
2017.11	3,488,082	1,675,282	1,220,287	1,979,776	680,055	730,894	2,511,997	9,438,810	1,413,444
2017.12	4,136,329	1,850,113	1,357,294	2,216,892	751,019	835,787	2,697,258	10,720,768	1,601,791
2018.01~08	32,817,310	14,406,207	10,698,776	16,919,746	5,974,370	6,610,083	22,247,569	82,897,440	11,419,294
2018.01	4,477,102	1,966,689	1,465,797	2,348,574	807,536	905,302	2,798,813	11,415,963	1,668,339
2018.02	4,469,940	1,898,871	1,433,194	2,195,442	798,506	885,432	2,600,426	11,183,300	1,674,745
2018.03	3,657,824	1,714,122	1,253,100	2,050,296	698,660	784,247	2,696,446	9,993,520	1,485,194
2018.04	3,503,967	1,675,122	1,230,455	1,959,511	685,493	752,264	2,620,459	9,563,138	1,370,294
2018.05	3,366,946	1,594,722	1,176,277	1,865,680	648,945	719,715	2,753,446	9,270,783	1,262,858
2018.06	3,686,242	1,647,154	1,232,515	1,981,285	688,052	758,538	2,778,506	9,487,505	1,250,381
2018.07	4,260,544	1,813,944	1,342,336	2,110,535	753,263	824,653	2,917,598	10,296,257	1,285,711
2018.08	5,394,746	2,095,583	1,565,102	2,408,422	893,915	979,932	3,081,875	11,686,973	1,421,772

주1) 2012년 10월부터 세종시 실적을 충남에서 분리

(단위 : MWh)

충 북	충 남	전 북	전 남	경 북	경 남	제 주	세종시	황 북	합 계
17,375,035	30,427,966	15,927,799	21,868,193	37,164,797	28,074,968	3,183,210	-	52,820	385,070,137
17,591,645	32,115,473	16,684,299	23,589,470	37,983,313	28,393,041	3,352,343	-	112,692	394,474,637
19,444,836	38,809,312	18,949,073	25,059,934	41,589,052	31,549,222	3,574,624	-	151,763	434,160,228
20,453,357	42,650,113	21,168,359	27,136,864	44,167,301	33,071,206	3,710,080	-	158,975	455,070,261
21,361,911	44,492,412	21,462,325	28,484,719	44,799,525	33,014,947	3,864,639	578,610	178,351	466,592,949
21,665,043	45,466,812	21,708,655	30,302,068	45,444,247	33,530,619	4,094,900	2,345,527	103,415	474,848,580
22,179,261	47,294,961	22,297,413	31,722,944	46,016,364	33,435,157	4,220,090	2,437,032	178,108	477,591,701
22,949,032	47,286,062	22,086,860	32,637,829	44,956,836	33,876,325	4,429,553	2,641,139	190,544	483,654,816
24,008,863	48,453,931	22,733,495	33,096,902	44,647,503	34,497,477	4,738,201	2,801,869	20,479	497,038,904
24,843,380	50,180,209	22,799,647	33,562,076	45,455,611	34,647,864	5,013,545	2,918,758	-	507,746,386
16,579,065	33,467,067	15,298,808	22,390,867	30,200,615	23,385,801	3,395,986	1,950,342	-	339,967,730
2,096,900	4,316,874	1,963,678	2,925,331	3,872,112	2,960,983	490,005	255,802	-	45,353,733
2,025,762	4,109,028	1,875,214	2,827,403	3,757,191	2,879,660	430,854	245,761	-	42,336,101
1,862,331	3,903,713	1,710,326	2,737,099	3,581,571	2,456,870	366,234	215,765	-	38,368,804
2,086,963	4,263,162	1,854,753	2,675,816	3,862,255	2,786,077	383,331	242,114	-	41,293,174
2,289,258	4,437,239	2,060,546	2,930,891	4,053,979	3,139,455	437,140	264,776	-	45,780,576
17,552,763	34,743,715	15,407,130	23,182,595	30,831,429	23,837,557	3,607,765	2,064,824	-	355,218,769
2,365,631	4,628,992	2,152,748	3,016,089	4,179,139	3,393,372	490,242	281,364	-	48,361,741
2,282,183	4,387,240	2,037,531	2,885,332	3,978,655	3,258,151	511,137	269,702	-	46,749,816
2,182,432	4,370,209	1,926,654	2,621,639	3,850,248	2,967,940	431,990	251,895	-	42,936,450
2,090,819	4,158,538	1,876,137	3,292,919	3,740,997	2,840,554	430,151	241,693	-	42,032,551
2,042,345	4,128,141	1,831,040	2,838,286	3,735,654	2,664,333	395,955	235,345	-	40,530,519
2,058,719	4,102,184	1,810,635	2,646,151	3,584,216	2,694,747	396,634	242,180	-	41,045,645
2,179,169	4,342,391	1,777,088	2,799,291	3,766,046	2,872,740	431,586	256,799	-	44,029,950
2,351,465	4,626,019	1,995,297	3,082,888	3,996,474	3,145,720	520,069	285,846	-	49,532,098

20-1. 행정구역별 수용호수
Power Sold by Province

구 분	서 울	부 산	대 구	인 천	광 주	대 전	울 산	경 기	강 원
2008	3,036,105	1,147,170	785,574	823,213	443,834	432,523	353,728	3,364,828	832,089
2009	3,061,319	1,152,245	791,320	834,374	451,057	443,519	360,482	3,448,837	850,629
2010	3,127,242	1,168,269	800,585	862,705	462,672	465,250	372,924	3,547,389	868,928
2011	3,213,280	1,192,817	820,940	884,924	471,124	483,447	385,869	3,666,846	886,990
2012	3,297,656	1,217,929	839,322	905,425	484,454	504,791	401,743	3,784,921	908,906
2013	3,396,721	1,238,164	851,861	916,535	504,496	513,418	414,659	3,889,183	930,463
2014	3,441,223	1,252,737	870,345	936,198	516,639	522,331	427,835	3,998,459	950,946
2015	3,467,528	1,263,051	891,935	955,702	526,471	538,213	440,557	4,117,575	975,262
2016	3,506,464	1,270,512	918,572	978,238	531,637	556,529	450,632	4,248,808	1,000,910
2017	3,563,803	1,279,193	929,637	1,005,645	543,151	576,795	459,420	4,369,707	1,026,182
2017.08	3,535,496	1,275,573	926,847	995,139	540,608	574,841	457,289	4,320,501	1,021,815
2017.09	3,550,203	1,276,680	927,963	996,966	541,069	574,501	457,975	4,331,136	1,025,501
2017.10	3,553,596	1,276,686	928,354	997,800	541,461	574,774	458,486	4,337,077	1,025,127
2017.11	3,559,243	1,278,002	930,700	1,007,393	546,681	577,065	459,898	4,413,518	1,048,342
2017.12	3,563,803	1,279,193	929,637	1,005,645	543,151	576,795	459,420	4,369,707	1,026,182
2018.01	3,568,052	1,279,814	930,326	1,002,065	543,790	577,942	459,801	4,366,245	1,035,102
2018.02	3,571,397	1,280,877	931,415	1,003,181	544,532	578,925	460,143	4,382,212	1,037,185
2018.03	3,574,997	1,281,113	931,937	1,011,497	548,960	580,863	461,377	4,444,917	1,061,128
2018.04	3,579,080	1,282,173	931,979	1,008,854	545,007	580,024	461,272	4,399,764	1,041,160
2018.05	3,581,952	1,282,566	941,259	1,004,353	544,992	579,982	461,935	4,398,611	1,043,604
2018.06	3,584,352	1,282,539	941,478	1,004,772	544,519	580,632	462,590	4,411,579	1,046,462
2018.07	3,587,078	1,282,496	941,858	1,008,080	544,409	581,290	463,045	4,415,672	1,053,752
2018.08	3,591,612	1,282,549	951,023	1,010,239	544,317	581,730	463,361	4,424,996	1,058,559

주1) 2012년 10월부터 세종시 실적을 충남에서 분리

(단위 : 호)

충 북	충 남	전 북	전 남	경 북	경 남	제 주	세 종	황 북	합 계
820,888	1,076,938	926,633	1,106,823	1,524,494	1,472,953	271,002	-	253	18,419,048
838,126	1,103,222	903,752	1,135,861	1,566,729	1,508,845	276,850	-	244	18,727,411
865,909	1,141,204	943,598	1,160,472	1,607,210	1,551,878	282,977	-	238	19,229,450
890,383	1,184,303	973,340	1,201,817	1,662,139	1,599,848	296,567	-	232	19,814,866
916,759	1,171,169	1,022,299	1,251,282	1,729,293	1,660,652	311,032	68,018	248	20,475,899
940,692	1,208,741	1,046,867	1,284,336	1,777,464	1,705,087	324,574	74,187	245	21,017,693
964,440	1,243,023	1,109,077	1,308,664	1,826,845	1,744,017	339,072	80,165	253	21,532,269
991,176	1,281,942	1,133,398	1,335,482	1,884,765	1,785,232	358,644	83,028	254	22,030,215
1,016,059	1,317,480	1,155,045	1,364,679	1,937,384	1,828,814	385,200	85,756	-	22,552,719
1,041,172	1,357,245	1,178,675	1,393,273	1,980,254	1,865,308	418,037	89,514	-	23,077,023
1,032,435	1,350,835	1,129,991	1,361,087	1,970,362	1,852,340	407,651	88,385	-	22,841,195
1,037,300	1,348,025	1,132,408	1,363,617	1,975,193	1,855,479	410,179	88,741	-	22,893,003
1,037,320	1,350,593	1,133,895	1,365,664	1,977,695	1,858,105	412,832	88,919	-	22,918,438
1,073,461	1,462,096	1,202,448	1,486,252	2,049,773	1,886,948	415,610	94,156	-	23,491,599
1,041,172	1,357,245	1,178,675	1,393,273	1,980,254	1,865,308	418,037	89,514	-	23,077,023
1,043,009	1,360,594	1,138,888	1,371,421	1,981,440	1,867,879	420,504	89,674	-	23,036,557
1,044,543	1,362,866	1,139,594	1,373,069	1,982,900	1,868,808	423,166	89,913	-	23,074,737
1,080,570	1,472,646	1,212,661	1,492,599	2,055,885	1,894,297	424,444	95,074	-	23,624,976
1,048,187	1,367,768	1,180,391	1,401,101	1,989,737	1,872,737	427,291	90,446	-	23,206,982
1,049,920	1,370,714	1,144,804	1,379,659	1,993,376	1,874,710	428,924	90,493	-	23,171,864
1,052,407	1,373,996	1,147,579	1,382,318	1,997,939	1,875,490	430,774	90,876	-	23,210,302
1,054,813	1,377,294	1,149,319	1,385,188	2,002,312	1,877,432	432,698	91,110	-	23,247,846
1,056,795	1,380,564	1,150,670	1,387,856	2,007,929	1,879,792	434,561	91,487	-	23,298,040

20-2. 행정구역별 판매수입
Revenues from Sales by Province

구 분	서 울	부 산	대 구	인 천	광 주	대 전	울 산	경 기	강 원
2008	4,302,551	1,643,211	1,151,365	1,607,001	614,390	686,162	1,602,512	6,638,495	1,012,823
2009	4,501,509	1,721,923	1,189,858	1,729,591	650,440	730,298	1,801,248	7,199,977	1,086,810
2010	4,846,210	1,922,698	1,347,202	1,937,354	728,565	810,455	2,030,167	8,219,118	1,205,228
2011	4,906,137	2,016,505	1,418,666	2,082,269	773,588	852,720	2,269,663	8,887,120	1,343,671
2012	5,383,569	2,248,093	1,585,661	2,319,376	863,255	949,373	2,654,266	10,240,834	1,493,253
2013	5,659,889	2,381,260	1,713,745	2,521,310	944,075	1,025,922	2,939,789	11,175,426	1,595,389
2014	5,680,548	2,427,186	1,758,557	2,641,306	976,283	1,055,864	3,101,611	11,717,220	1,681,741
2015	5,739,199	2,436,213	1,777,454	2,701,675	994,381	1,070,138	3,123,563	12,059,549	1,733,454
2016	5,868,162	2,488,514	1,807,333	2,777,111	1,016,102	1,090,996	3,280,840	12,509,491	1,761,664
2017	5,623,776	2,483,562	1,784,504	2,800,714	1,006,439	1,072,651	3,223,352	12,897,850	1,769,185
2017.01~08	3,853,167	1,681,044	1,216,353	1,899,874	686,120	733,948	2,178,271	8,694,063	1,191,674
2017.08	643,204	260,709	183,691	284,682	108,768	113,454	315,972	1,299,660	158,427
2017.09	469,779	208,561	146,596	219,571	85,345	86,095	247,885	1,015,030	130,037
2017.10	361,727	165,479	115,762	183,690	65,426	69,056	225,973	852,804	117,351
2017.11	424,959	201,272	142,716	234,120	79,081	84,825	278,656	1,091,397	153,381
2017.12	514,144	227,206	163,078	263,459	90,466	98,726	292,568	1,244,557	176,742
2018.01~08	4,023,974	1,714,803	1,248,475	1,951,802	700,438	756,906	2,238,504	9,358,557	1,228,044
2018.01	555,502	242,262	175,590	279,979	97,056	106,690	306,845	1,325,974	184,537
2018.02	554,225	235,262	171,835	264,502	96,392	104,578	281,339	1,294,655	183,742
2018.03	417,441	188,139	135,881	213,435	76,245	82,527	237,402	1,026,149	145,633
2018.04	385,249	178,387	127,531	200,218	79,699	76,408	229,649	954,723	129,919
2018.05	369,060	169,231	121,944	193,395	59,670	72,829	235,642	923,413	121,743
2018.06	452,255	198,954	144,712	230,222	80,960	87,951	292,208	1,101,223	139,758
2018.07	566,951	235,264	171,696	266,694	96,336	102,911	318,742	1,277,849	153,598
2018.08	723,291	267,304	199,287	303,356	114,080	123,012	336,677	1,454,572	169,114

주1) 2012년 10월부터 세종시 실적을 충남에서 분리

(단위 : 백만원)

충 북	충 남	전 북	전 남	경 북	경 남	제 주	세종시	황 북	합 계
1,253,661	2,105,480	1,171,536	1,499,802	2,573,001	2,206,084	256,161	-	4,523	30,328,758
1,372,511	2,420,069	1,314,066	1,733,395	2,844,214	2,396,035	272,896	-	10,180	32,975,019
1,576,903	3,000,269	1,534,765	1,920,097	3,255,930	2,741,124	300,365	-	13,621	37,390,071
1,743,519	3,462,635	1,779,957	2,166,866	3,629,242	2,981,297	318,036	-	15,162	40,647,051
2,035,731	4,023,488	2,006,064	2,516,016	4,124,256	3,361,508	355,901	57,217	19,958	46,237,820
2,228,088	4,427,404	2,189,246	2,849,156	4,536,713	3,648,079	399,809	240,213	12,862	50,488,373
2,404,226	4,845,985	2,348,936	3,142,491	4,832,442	3,815,579	423,569	267,927	22,599	53,144,071
2,492,080	4,887,134	2,354,871	3,234,407	4,729,548	3,863,688	448,730	293,519	24,084	53,963,686
2,595,575	5,013,098	2,393,194	3,279,749	4,685,944	3,919,435	484,466	312,832	3,017	55,287,523
2,668,982	5,168,387	2,373,202	3,282,888	4,735,971	3,891,083	505,631	325,898	-	55,614,011
1,797,616	3,482,426	1,608,955	2,215,615	3,177,087	2,645,541	343,326	219,746	-	37,624,825
252,876	496,027	229,237	316,314	443,578	376,424	57,507	32,155	-	5,572,686
204,317	389,099	184,063	257,505	364,553	311,579	44,205	26,189	-	4,390,331
176,856	349,677	158,502	234,237	328,395	252,157	33,838	21,488	-	3,712,420
233,621	461,972	199,644	273,702	421,567	319,905	38,786	27,658	-	4,667,269
256,572	485,213	222,037	301,829	444,370	361,901	45,477	30,817	-	5,219,166
1,896,684	3,604,569	1,612,435	2,271,352	3,221,079	2,679,637	362,805	231,053	-	39,101,216
266,058	507,100	234,251	313,620	460,502	385,923	49,911	32,693	-	5,524,578
255,443	476,556	221,138	296,228	436,611	371,336	51,176	31,637	-	5,326,659
210,553	399,573	182,292	261,094	364,356	303,217	40,374	25,662	-	4,309,975
197,962	378,190	173,701	261,542	346,682	283,886	38,304	23,773	-	4,065,825
193,710	371,570	168,776	247,704	341,026	270,741	35,943	23,041	-	3,919,445
232,941	450,401	196,735	269,872	389,146	315,631	40,548	27,624	-	4,651,140
260,556	495,542	206,908	297,849	431,369	360,692	48,674	31,381	-	5,323,012
279,462	525,637	228,632	323,442	451,388	388,212	57,875	35,241	-	5,980,581

20-3. 행정구역별 계약종별 판매량
Power Sold by Province & Segments

구	분	서 울	부 산	대 구	인 천	광 주	대 전	울 산	경 기
2017. 누계 (01~08)	주택용	9,123,891	3,130,481	2,221,973	2,669,008	1,350,043	1,327,012	1,028,773	11,390,435
	일반용	17,109,216	4,344,207	3,077,477	3,845,167	1,965,093	2,310,790	1,414,129	18,386,704
	교육용	1,141,565	310,443	231,952	231,028	197,044	263,545	126,036	1,034,788
	산업용	3,399,397	5,854,381	4,541,247	9,307,679	2,163,094	2,245,088	18,319,506	41,555,042
	농사용	11,501	73,620	54,243	86,699	54,583	19,894	54,878	1,602,039
	가로등	221,553	115,997	83,485	109,968	49,662	56,049	43,079	541,026
	심야	338,678	234,450	184,427	205,125	82,938	166,578	89,886	2,136,512
	계	31,345,801	14,063,579	10,394,804	16,454,673	5,862,457	6,388,957	21,076,287	76,646,546
2018. 누계 (01~08)	주택용	9,635,243	3,297,519	2,367,731	2,870,135	1,425,710	1,407,537	1,085,954	12,440,200
	일반용	17,889,916	4,564,340	3,263,138	4,216,440	2,063,255	2,419,455	1,475,887	20,083,231
	교육용	1,219,048	326,497	247,029	251,435	205,788	282,580	135,670	1,119,458
	산업용	3,501,555	5,795,364	4,502,741	9,177,718	2,095,763	2,254,987	19,361,574	44,812,286
	농사용	11,864	79,860	56,259	91,661	55,181	22,312	57,659	1,743,788
	가로등	212,946	117,789	83,316	111,194	50,755	56,484	44,383	557,295
	심야	346,738	224,838	178,561	201,164	77,918	166,728	86,442	2,141,182
	계	32,817,310	14,406,207	10,698,776	16,919,746	5,974,370	6,610,083	22,247,569	82,897,440
2017. 8	주택용	1,452,965	479,349	344,046	418,798	215,327	205,197	161,562	1,770,285
	일반용	2,562,825	678,848	459,166	574,796	300,264	342,206	213,953	2,635,153
	교육용	145,601	41,245	30,170	27,987	26,412	34,533	17,425	118,427
	산업용	474,693	742,744	552,044	1,169,019	275,234	295,295	2,372,642	5,429,519
	농사용	1,452	8,488	8,038	13,926	6,067	2,794	8,113	200,842
	가로등	24,647	12,935	9,474	12,122	5,478	6,450	5,034	62,201
	심야	70,912	15,561	11,058	9,315	4,490	9,013	3,847	82,108
	계	4,733,095	1,979,171	1,413,997	2,225,964	833,272	895,488	2,782,576	10,298,534
2018. 8	주택용	1,810,791	567,513	434,235	525,788	254,205	258,740	191,715	2,253,653
	일반용	2,810,493	724,171	508,546	654,277	324,847	377,611	229,558	3,025,131
	교육용	160,286	42,817	33,156	32,168	28,550	37,651	18,399	130,482
	산업용	503,153	723,853	558,476	1,159,138	268,853	286,442	2,624,044	5,875,659
	농사용	1,581	9,148	9,976	15,873	7,342	3,704	9,106	254,831
	가로등	24,136	13,226	9,638	12,292	5,801	6,637	5,341	65,376
	심야	84,307	14,856	11,075	8,886	4,318	9,145	3,712	81,842
	계	5,394,746	2,095,583	1,565,102	2,408,422	893,915	979,932	3,081,875	11,686,973

(단위 : MWh)

강 원	충 북	충 남	전 북	전 남	경 북	경 남	제 주	세 종	황 북	합 계
1,365,263	1,406,411	1,872,617	1,618,755	1,604,635	2,321,560	2,987,426	545,610	255,472	-	46,219,365
2,948,920	2,237,452	3,023,709	2,441,728	2,474,578	3,658,133	4,347,895	1,282,151	363,725	-	75,231,075
215,528	205,327	299,052	246,434	201,127	414,446	280,902	86,132	46,369	-	5,531,719
4,820,282	11,258,841	25,833,324	9,211,314	15,246,315	21,478,521	13,259,977	390,993	1,156,029	-	190,041,030
400,912	501,046	1,313,519	1,011,412	2,254,093	1,290,662	1,628,233	967,481	46,382	-	11,371,196
134,289	117,286	114,512	131,596	156,614	196,281	182,980	32,816	18,983	-	2,306,177
1,180,882	852,703	1,010,332	637,568	453,504	841,012	698,387	90,804	63,382	-	9,267,169
11,066,076	16,579,065	33,467,067	15,298,808	22,390,867	30,200,615	23,385,801	3,395,986	1,950,342	-	339,967,730
1,463,461	1,528,520	2,028,470	1,702,415	1,682,231	2,487,458	3,159,463	581,319	318,116	-	49,481,483
3,214,967	2,404,503	3,204,965	2,630,279	2,633,835	3,942,029	4,593,300	1,372,003	420,318	-	80,391,860
232,194	218,349	326,581	258,993	211,424	436,829	296,315	91,048	52,404	-	5,911,642
4,717,304	11,849,228	26,614,555	8,957,616	15,653,304	21,509,482	13,193,523	409,800	1,137,833	-	195,544,757
437,047	561,315	1,451,213	1,101,708	2,408,492	1,409,010	1,732,054	1,028,051	53,349	-	12,300,866
138,067	120,015	113,930	133,643	154,444	201,212	183,229	34,003	20,039	-	2,332,769
1,216,254	870,834	1,004,002	622,476	438,865	845,410	679,673	91,540	62,765	-	9,255,393
11,419,294	17,552,763	34,743,715	15,407,130	23,182,595	30,831,429	23,837,557	3,607,765	2,064,824	-	355,218,769
190,395	210,967	289,256	249,005	246,098	338,386	468,686	96,320	41,961	-	7,178,603
404,507	314,453	431,051	356,446	366,153	512,646	654,808	209,198	53,169	-	11,069,642
22,672	21,882	34,930	29,029	24,994	49,363	35,972	13,164	5,333	-	679,138
581,564	1,440,871	3,348,343	1,153,467	1,954,326	2,732,037	1,591,865	52,508	144,426	-	24,310,597
56,714	71,692	171,276	142,270	300,324	189,868	165,862	108,541	7,047	-	1,463,315
16,611	13,990	13,551	15,659	18,782	23,556	21,601	3,911	2,176	-	268,178
37,488	23,045	28,468	17,802	14,654	26,256	22,188	6,364	1,690	-	384,260
1,309,951	2,096,900	4,316,874	1,963,678	2,925,331	3,872,112	2,960,983	490,005	255,802	-	45,353,733
231,392	268,551	348,910	292,457	280,177	427,417	547,960	100,252	57,285	-	8,851,041
461,039	358,332	484,122	400,430	400,463	584,492	710,533	222,147	63,594	-	12,339,788
24,783	24,248	38,359	31,749	26,634	51,356	38,016	13,346	5,788	-	737,789
581,020	1,564,343	3,482,154	1,059,012	1,993,240	2,621,145	1,618,029	55,803	145,622	-	25,119,985
71,667	99,660	233,889	179,418	349,817	262,996	187,903	116,530	9,665	-	1,823,105
17,291	14,865	13,392	16,127	19,023	24,552	22,162	3,995	2,396	-	276,251
34,579	21,466	25,192	16,104	13,534	24,515	21,117	7,995	1,495	-	384,138
1,421,772	2,351,465	4,626,019	1,995,297	3,082,888	3,996,474	3,145,720	520,069	285,846	-	49,532,098

21. 산업분류별 판매량
Power Sold by Industry

구분	2017.08	2017.09	2017.10	2017.11	2017.12	2018.01		
가정용	6,973,292	5,664,935	4,994,141	5,302,270	5,679,295	6,136,057		
서비스	공공용	2,081,653	1,891,448	1,622,337	1,842,265	2,410,267	2,512,534	
	서비스업	12,886,528	11,433,383	9,970,487	10,795,087	13,461,475	14,988,553	
	전철	271,417	245,601	221,863	232,090	254,635	269,021	
	수도	478,640	455,364	445,608	439,548	465,683	474,733	
	사업자용	210,547	194,115	197,175	181,468	219,772	209,272	
	순수서비스	11,925,924	10,538,303	9,105,841	9,941,982	12,521,386	14,035,528	
소계	14,968,180	13,324,831	11,592,824	12,637,352	15,871,742	17,501,087		
생 산 부 문	농림어업	1,327,537	1,233,218	1,031,663	1,592,970	1,550,869	1,734,393	
	광업	113,646	122,378	107,854	131,846	133,502	124,326	
	제	식품	1,082,469	1,051,136	908,926	958,934	957,386	987,506
		식품제조	932,893	908,402	788,819	828,569	831,177	856,992
		음료제조	107,668	98,625	81,973	85,655	82,851	87,127
		담배제조업	41,908	44,109	38,134	44,711	43,357	43,387
		섬유, 의복	933,105	951,524	848,765	936,283	971,188	984,962
		섬유	810,382	828,698	749,796	821,868	844,388	852,840
		의복, 모피	61,713	60,411	47,314	53,420	61,527	64,080
	가죽, 신발	61,010	62,415	51,655	60,995	65,273	68,043	
	조	목재, 나무	147,343	151,319	141,090	162,733	176,299	180,728
		펄프, 종이	677,065	691,798	654,500	690,803	720,900	729,961
		출판, 인쇄	117,650	118,089	91,892	112,282	133,526	142,064
		석유, 화학	5,185,835	5,139,684	4,957,668	4,933,026	5,248,157	5,310,695
	업	석유정제	1,087,119	1,049,169	1,117,312	1,054,427	1,096,661	1,115,371
		화학제품	3,357,559	3,319,092	3,197,482	3,113,608	3,351,416	3,386,239
		고무, 플라스틱	741,157	771,423	642,873	764,992	800,080	809,085
		요업	970,166	1,012,789	996,144	1,109,776	1,113,711	979,449
		유리	225,717	220,778	204,700	220,680	228,178	233,675
		시멘트	744,449	792,011	791,444	889,096	885,533	745,774
1차 금속		3,735,856	3,789,517	3,787,783	3,753,466	3,839,115	3,878,581	
조립 금속		753,203	797,445	667,380	832,793	889,336	917,339	
기타 기계장비		851,271	879,635	725,835	889,785	993,416	1,033,578	
사무기기		42,993	42,503	40,445	43,092	44,446	42,454	
문	전기기기 제조	476,062	496,024	432,360	489,283	520,154	553,103	
	영상, 음향, 통신	4,333,783	4,100,505	4,055,340	3,976,118	4,089,825	4,146,570	
	의료, 광학기기	548,563	543,820	481,722	510,173	539,699	573,857	
	자동차 제조	1,391,979	1,486,956	1,239,506	1,509,135	1,508,554	1,572,083	
	기타 수송장비	351,758	360,265	290,680	333,849	360,497	376,455	
	가구 및 기타	326,870	330,771	280,053	338,510	386,266	403,219	
	재생재료 처리	45,105	46,959	42,232	48,691	52,695	53,275	
	소계	21,971,077	21,990,739	20,642,321	21,628,735	22,545,168	22,865,879	
계	23,412,260	23,346,336	21,781,839	23,353,552	24,229,539	24,724,598		
합계	45,353,733	42,336,101	38,368,804	41,293,174	45,780,576	48,361,741		

(단위 : MWh)

2018.02	2018.03	2018.04	2018.05	2018.06	2018.07	2018.08
6,221,352	5,325,911	5,452,621	5,108,532	5,264,769	5,871,826	8,604,195
2,459,523	2,087,112	1,870,357	1,697,216	1,797,238	2,040,130	2,252,486
15,137,738	12,241,877	11,237,134	10,408,427	10,936,353	12,061,724	14,202,908
258,123	230,083	225,845	224,550	232,712	263,298	293,876
463,586	447,428	442,733	442,243	455,216	472,738	500,536
205,543	196,132	208,829	229,607	192,023	176,505	164,984
14,210,487	11,368,234	10,359,727	9,512,026	10,056,402	11,149,183	13,243,513
17,597,261	14,328,989	13,107,492	12,105,642	12,733,592	14,101,854	16,455,394
1,839,290	1,477,822	1,299,131	1,082,535	1,156,084	1,169,275	1,667,481
113,269	121,598	125,971	123,668	123,942	121,525	117,746
918,808	908,916	935,230	966,592	1,021,075	1,091,563	1,145,788
802,959	784,272	807,582	836,702	873,894	933,806	990,052
77,871	85,607	86,482	88,998	102,714	111,496	113,754
37,978	39,037	41,166	40,892	44,468	46,261	41,983
931,687	899,474	924,302	901,479	891,090	913,588	902,898
797,257	783,605	807,266	793,766	782,174	798,378	779,218
67,812	55,525	56,768	51,159	51,708	55,406	63,490
66,619	60,344	60,267	56,554	57,208	59,805	60,190
170,714	163,323	158,556	153,201	148,150	150,577	142,503
672,703	704,181	664,207	677,374	671,297	692,757	685,444
140,973	114,410	109,739	100,703	107,928	116,866	121,855
4,844,428	5,049,774	5,032,064	5,252,097	5,157,983	5,295,118	5,333,156
1,013,548	1,023,298	947,819	1,070,813	1,050,671	1,128,234	1,146,551
3,060,931	3,278,901	3,338,046	3,445,142	3,360,391	3,391,561	3,439,171
769,949	747,575	746,199	736,142	746,921	775,322	747,433
905,870	1,019,496	1,044,776	1,050,748	1,048,305	1,026,459	965,976
211,521	225,528	215,409	218,009	216,659	226,166	225,604
694,349	793,969	829,367	832,740	831,647	800,293	740,372
3,502,259	3,663,661	4,231,168	3,936,576	3,598,867	3,739,776	3,599,563
865,581	810,367	790,793	749,839	763,762	782,734	758,429
1,022,588	894,368	881,725	827,911	840,057	880,102	886,190
38,275	35,492	34,459	33,771	34,587	37,033	37,985
510,537	533,581	512,581	519,181	522,733	551,528	553,697
3,779,249	4,127,896	4,038,120	4,249,021	4,244,567	4,624,403	4,722,638
470,024	549,706	542,901	562,078	565,360	606,158	622,117
1,424,202	1,474,756	1,444,467	1,438,506	1,437,602	1,476,648	1,450,273
325,672	335,758	311,614	322,548	341,668	389,659	362,801
403,920	348,596	340,231	319,989	325,047	343,389	348,998
51,155	48,373	50,404	48,528	47,177	47,110	46,970
20,978,644	21,682,129	22,047,337	22,110,143	21,767,258	22,765,469	22,687,280
22,931,203	23,281,550	23,472,438	23,316,345	23,047,284	24,056,270	24,472,508
46,749,816	42,936,450	42,032,551	40,530,519	41,045,645	44,029,950	49,532,098

21-1. 산업분류별 행정구역별 판매량
Power Sold by Industry & Province

구분	서울	부산	대구	인천	광주	대전	울산	경기	
가정용	1,771,830	546,573	416,774	514,219	248,508	247,400	186,663	2,215,373	
서비스	공공용	363,801	127,682	82,481	88,423	56,281	103,265	46,669	523,932
	서비스업	3,092,960	803,752	582,052	759,940	342,235	415,778	367,623	3,370,452
	전철	161,291	9,709	21,902	28,119	4,235	3,366	8	41,527
	수도	61,435	17,307	17,028	13,631	3,678	8,596	14,139	151,844
	사업자용	10,227	10,987	1,558	14,489	1,109	2,077	25,408	11,544
	순수서비스	2,860,007	765,748	541,564	703,701	333,213	401,740	328,067	3,165,536
	소계	3,456,762	931,435	664,533	848,363	398,516	519,044	414,291	3,894,384
농림어업	농림어업	1,443	9,634	8,747	15,119	6,664	3,420	8,748	247,178
	광업	193	1,662	489	3,526	154	80	1,218	21,642
제조업	식품	23,971	64,120	21,333	60,530	17,590	19,038	15,879	261,059
	식품제조	22,267	61,525	19,510	55,590	11,533	12,335	14,356	231,434
	음료제조	1,703	2,594	1,820	1,581	4,666	2,010	1,381	27,731
	담배제조업	-	1	3	3,359	1,391	4,693	142	1,894
제조업	섬유, 의복	48,799	39,821	78,324	5,283	19,102	3,189	82,882	158,649
	섬유	12,252	25,009	72,970	3,257	18,529	2,779	82,757	125,462
	의복, 모피	33,821	4,695	4,528	1,177	184	209	42	12,762
	가죽, 신발	2,727	10,117	826	849	389	201	83	20,425
제조업	목재, 나무	347	3,814	1,410	46,254	496	381	1,168	37,487
	펄프, 종이	3,965	2,190	37,002	4,881	3,541	43,763	51,676	159,506
	출판, 인쇄	26,969	2,783	4,383	6,557	1,816	1,366	287	61,334
	석유, 화학	10,030	34,772	33,845	138,108	29,103	55,133	1,500,207	595,471
제조업	석유정제	289	257	1,136	85,662	51	38	560,980	2,760
	화학제품	4,152	19,804	15,360	31,743	4,946	20,196	915,795	409,605
	고무, 플라스틱	5,589	14,711	17,348	20,703	24,107	34,899	23,432	183,106
	제조업	2,109	6,220	5,454	14,196	1,608	4,520	17,213	141,054
제조업	유리	604	1,695	808	2,158	511	2,687	14,124	72,014
	시멘트	1,506	4,526	4,646	12,038	1,097	1,833	3,088	69,040
	1차 금속	1,169	150,202	22,593	181,116	5,415	4,142	404,574	151,151
	조립 금속	5,286	73,605	52,204	56,551	12,662	5,239	34,676	179,390
제조업	기타 기계장비	13,791	80,809	43,740	77,462	16,076	7,066	14,186	301,516
	사무기기	359	17	5,554	470	424	253	291	25,322
	전기기기 제조	1,368	10,466	16,111	14,395	19,604	7,054	39,720	84,995
	영상,음향,통신	3,001	8,193	18,933	96,781	65,712	26,377	2,450	2,566,330
제조업	의료, 광학기	6,550	6,819	8,952	235,491	2,665	10,108	1,823	141,070
	자동차 제조	1,496	97,051	111,840	45,440	40,690	17,871	219,579	240,170
	기타 수송장비	2,102	21,076	5,246	4,345	553	566	83,791	7,454
	가구 및 기타	12,987	3,384	3,825	36,775	1,727	3,752	399	185,591
제조업	재생재료 처리	220	938	3,808	2,560	1,289	171	153	10,848
	소계	164,519	606,280	474,559	1,027,195	240,073	209,989	2,470,954	5,308,396
합계	166,155	617,575	483,795	1,045,839	246,891	213,489	2,480,920	5,577,217	
합계	5,394,746	2,095,583	1,565,102	2,408,422	893,915	979,932	3,081,875	11,686,973	

주1) 2012년 10월부터 세종시 실적을 충남에서 분리 주2) 개성지사 판매 부분

(단위 : MWh)

강 원	충 북	충 남	전 북	전 남	경 북	경 남	제 주	세종시 ¹⁾	황 북 ²⁾	합 계
220,129	260,174	336,791	282,482	268,063	408,638	527,243	96,708	56,629	-	8,604,195
125,424	108,101	100,862	102,633	89,819	139,621	134,077	30,926	28,489	-	2,252,486
500,940	415,555	615,109	460,290	558,585	748,585	849,392	255,643	64,016	-	14,202,908
4,023	643	-	1,632	153	2,742	14,523	-	-	-	293,876
16,157	26,849	26,383	14,312	26,092	30,684	47,409	17,966	7,024	-	500,536
8,572	2,221	5,778	1,630	4,575	57,147	2,951	4,511	198	-	164,984
472,188	385,841	582,948	442,715	527,765	658,013	784,508	233,165	56,794	-	13,243,513
626,364	523,657	715,971	562,923	648,403	888,206	983,469	286,569	92,505	-	16,455,394
67,364	92,491	219,794	158,950	308,852	233,219	163,636	112,927	9,295	-	1,667,481
31,656	9,287	13,725	5,095	5,838	16,313	5,444	380	1,047	-	117,746
53,457	123,424	121,381	140,244	51,587	55,567	89,971	16,388	10,249	-	1,145,788
42,183	106,178	99,864	129,700	48,837	45,939	70,731	8,237	9,833	-	990,052
10,015	15,878	7,219	9,405	2,259	6,025	11,193	8,039	235	-	113,754
1,260	1,369	14,298	1,139	491	3,604	8,048	112	181	-	41,983
1,107	26,534	19,824	56,740	13,350	318,294	28,203	583	2,214	-	902,898
873	18,023	15,642	51,832	12,559	315,911	19,475	41	1,848	-	779,218
95	587	1,043	2,269	419	866	763	16	15	-	63,490
139	7,924	3,139	2,638	373	1,517	7,965	526	351	-	60,190
1,447	3,489	11,042	22,875	2,013	5,808	4,297	101	74	-	142,503
2,175	75,836	63,350	102,542	7,690	28,971	70,451	828	27,078	-	685,444
374	2,235	4,393	773	731	4,659	2,672	260	262	-	121,855
13,742	219,183	699,034	277,821	1,222,724	330,107	149,471	1,885	22,519	-	5,333,156
60	2,042	316,089	333	173,550	2,462	830	2	10	-	1,146,551
7,712	126,727	290,746	258,209	1,019,404	242,149	60,164	1,166	11,291	-	3,439,171
5,969	90,414	92,200	19,278	29,770	85,495	88,478	716	11,217	-	747,433
269,866	179,850	68,579	47,996	43,303	101,908	31,998	1,695	28,406	-	965,976
8,775	10,673	21,266	28,403	2,213	32,928	6,105	216	20,425	-	225,604
261,091	169,177	47,313	19,593	41,090	68,980	25,893	1,479	7,981	-	740,372
93,910	37,872	864,903	178,713	410,892	793,839	296,762	67	2,242	-	3,599,563
2,502	59,895	46,995	10,835	9,983	73,894	133,674	239	799	-	758,429
2,620	30,945	54,670	12,891	5,627	66,308	156,506	107	1,871	-	886,190
80	1,565	808	132	51	825	406	-	1,427	-	37,985
2,866	119,976	67,558	11,245	17,959	64,339	73,866	68	2,105	-	553,697
3,547	410,333	1,040,826	40,427	3,075	377,545	42,613	2	16,493	-	4,722,638
9,269	65,106	80,125	6,790	5,101	19,424	18,800	919	3,105	-	622,117
8,982	46,831	183,925	62,671	5,727	185,140	175,847	52	6,961	-	1,450,273
9,012	4,809	2,988	2,793	47,630	11,562	158,836	38	-	-	362,801
1,062	54,815	7,884	1,259	1,479	5,844	27,682	177	357	-	348,998
241	3,158	1,453	9,102	2,810	6,064	3,870	77	208	-	46,970
476,259	1,465,857	3,339,739	985,847	1,851,732	2,450,098	1,465,928	23,486	126,370	-	22,687,280
575,279	1,567,634	3,573,257	1,149,892	2,166,421	2,699,630	1,635,008	136,793	136,712	-	24,472,508
1,421,772	2,351,465	4,626,019	1,995,297	3,082,888	3,996,474	3,145,720	520,069	285,846	-	49,532,098

21-2. 산업분류별 행정구역별 판매량(누계)

Power Sold by Industry & Province

(2018. 1 ~ 2018.8)

구분	서울	부산	대구	인천	광주	대전	울산	경기		
가정용	9,407,809	3,179,711	2,267,410	2,801,219	1,391,112	1,344,179	1,054,964	12,194,197		
서비스	공공용	2,540,251	914,744	587,529	647,355	398,567	698,141	343,035	3,906,738	
	서비스업	19,661,314	5,332,934	3,899,549	5,209,464	2,247,554	2,819,883	2,609,604	24,502,123	
	전철	1,034,395	69,828	151,497	197,749	26,011	24,045	60	318,473	
	수도	456,822	123,116	138,261	100,847	27,339	62,536	102,175	1,110,643	
	사업자용	69,943	124,730	8,497	122,306	6,477	13,029	245,462	78,066	
	순수서비스	18,100,153	5,015,260	3,601,294	4,788,563	2,187,726	2,720,272	2,261,907	22,994,940	
	소계	22,201,565	6,247,678	4,487,078	5,856,819	2,646,121	3,518,024	2,952,639	28,408,861	
생	농림어업	10,933	84,600	50,539	87,934	51,832	21,074	55,433	1,693,925	
	광업	1,931	14,429	3,678	30,257	1,060	584	10,703	188,219	
	제조	식품	154,446	366,965	143,517	446,103	114,680	138,835	124,846	1,800,587
		식품제조	144,417	353,660	128,192	410,147	75,254	84,276	115,975	1,603,049
		음료제조	10,029	13,288	15,303	10,370	30,271	12,604	7,987	179,567
		담배제조업	-	17	22	25,587	9,155	41,955	884	17,971
		섬유, 의복	337,368	338,058	675,738	44,784	180,101	27,624	619,893	1,405,504
		섬유	86,774	216,469	633,409	29,131	176,105	24,508	618,848	1,129,685
		의복, 모피	230,210	34,388	35,293	8,471	1,279	1,623	324	103,297
	가죽, 신발	20,384	87,201	7,036	7,183	2,717	1,493	721	172,522	
	제조	목재, 나무	2,923	30,504	11,699	411,776	4,458	2,973	9,976	346,706
		펄프, 종이	29,938	18,257	303,150	39,119	27,487	347,809	416,606	1,304,236
		출판, 인쇄	196,948	21,141	33,398	49,337	14,840	10,340	2,417	501,202
		석유, 화학	90,660	292,838	280,359	1,110,840	239,352	425,333	10,598,263	4,816,402
		석유정제	2,611	2,595	8,796	652,457	432	490	4,056,642	22,365
		화학제품	46,139	163,022	128,380	284,206	40,230	149,544	6,360,223	3,251,978
		고무, 플라스틱	41,910	127,221	143,183	174,178	198,690	275,299	181,398	1,542,058
	제조	요업	17,925	51,549	47,191	117,768	13,782	34,974	125,238	1,170,967
		유리	5,050	13,824	7,497	17,799	4,217	19,655	99,596	567,861
시멘트		12,874	37,725	39,694	99,968	9,565	15,320	25,642	603,107	
부	1차 금속	9,954	1,406,234	201,040	1,444,259	46,690	34,732	3,290,819	1,313,884	
	조립 금속	43,893	587,214	446,204	488,625	105,880	44,734	277,341	1,568,380	
	기타 기계장비	106,236	630,795	355,556	639,531	128,807	56,883	116,768	2,501,195	
	사무기기	2,525	1,297	38,847	3,837	3,207	1,862	3,026	196,415	
	전기기기 제조	10,429	83,224	123,042	111,187	148,713	55,065	287,524	675,905	
	영상,음향,통신	21,196	64,155	139,387	731,859	477,330	301,206	19,019	18,207,052	
	의료, 광학기	43,510	51,083	69,240	1,743,346	20,501	66,837	14,924	981,016	
	자동차 제조	14,240	737,297	919,970	390,258	330,861	143,333	1,615,216	1,933,085	
	기타 수송장비	14,785	159,160	43,124	36,489	3,349	4,093	647,376	62,068	
	가구 및 기타	96,054	31,578	30,351	313,324	13,044	28,165	3,240	1,532,080	
문	재생재료 처리	2,044	8,438	28,260	21,073	11,164	1,423	1,335	95,552	
	소계	1,195,073	4,879,788	3,890,072	8,143,516	1,884,245	1,726,222	18,173,829	40,412,238	
	계	1,207,936	4,978,818	3,944,289	8,261,707	1,937,137	1,747,880	18,239,966	42,294,382	
	합계	32,817,310	14,406,207	10,698,776	16,919,746	5,974,370	6,610,083	22,247,569	82,897,440	

강 원	충 북	충 남	전 북	전 남	경 북	경 남	제 주	세종시	합 계
1,389,619	1,474,586	1,952,553	1,643,656	1,608,053	2,370,783	3,032,086	559,492	313,832	47,985,264
1,027,004	884,363	774,006	775,517	679,203	1,108,871	1,002,546	213,044	215,682	16,716,595
4,466,141	3,503,528	5,081,160	3,546,025	3,991,238	6,039,996	6,166,351	1,655,147	482,678	101,214,715
35,248	5,627	-	13,024	1,006	21,913	98,631	-	-	1,997,507
121,390	196,983	200,607	105,322	186,955	227,637	358,216	132,355	48,006	3,699,212
59,097	12,691	66,633	10,448	29,354	690,282	18,167	26,635	1,077	1,582,895
4,250,407	3,288,227	4,813,920	3,417,230	3,773,922	5,100,164	5,691,337	1,496,157	433,596	93,935,100
5,493,145	4,387,891	5,855,166	4,321,542	4,670,441	7,148,867	7,168,897	1,868,191	698,361	117,931,310
416,236	524,990	1,373,136	991,008	2,163,585	1,241,033	1,601,067	1,007,434	51,207	11,426,011
253,444	77,257	110,694	40,566	43,586	135,935	48,115	3,005	8,579	972,045
381,990	824,967	852,498	1,046,456	356,024	397,986	644,545	109,690	71,342	7,975,479
301,317	711,143	689,866	968,618	337,435	324,596	512,538	57,420	68,356	6,886,259
67,543	102,598	50,077	68,857	13,896	42,248	76,725	51,288	1,395	754,049
13,130	11,226	112,556	8,981	4,693	31,142	55,282	981	1,591	335,172
8,472	219,991	171,831	460,553	106,628	2,492,725	235,159	3,886	21,165	7,349,480
6,685	155,520	139,256	421,054	100,442	2,473,505	164,444	267	18,404	6,394,504
769	3,849	9,784	18,884	3,441	7,556	6,499	140	140	465,947
1,019	60,622	22,791	20,615	2,745	11,664	64,216	3,479	2,621	489,029
13,301	34,955	91,464	196,545	18,311	49,877	40,484	962	839	1,267,752
17,413	598,804	523,944	779,223	62,935	237,446	548,929	13,037	229,593	5,497,924
4,821	18,454	34,789	6,195	5,109	31,789	19,646	1,711	2,401	954,539
114,390	1,669,514	5,368,168	2,797,145	9,473,332	2,567,268	1,242,704	13,412	175,336	41,275,315
883	18,255	2,428,774	3,913	1,269,054	21,242	7,312	24	462	8,496,307
63,111	941,242	2,204,426	2,633,858	7,958,041	1,879,204	507,938	7,978	80,862	26,700,383
50,396	710,017	734,967	159,373	246,236	666,822	727,453	5,410	94,013	6,078,626
2,208,421	1,566,077	577,571	392,673	376,623	828,344	283,834	14,695	213,448	8,041,080
72,658	87,247	177,304	221,956	18,917	249,901	50,565	1,835	156,688	1,772,571
2,135,763	1,478,829	400,267	170,717	357,705	578,443	233,269	12,860	56,760	6,268,509
791,014	316,571	6,703,718	1,466,156	3,534,108	7,040,099	2,530,378	637	20,159	30,150,451
23,376	505,340	385,943	93,813	81,743	623,811	1,152,838	2,175	7,533	6,438,845
23,995	248,542	438,405	107,267	44,540	539,749	1,309,688	905	17,656	7,266,518
864	11,638	6,369	1,555	1,502	6,501	4,449	-	10,163	294,057
25,873	862,098	474,030	90,760	146,132	518,797	614,941	491	28,729	4,256,941
29,150	2,867,935	7,610,401	291,558	26,006	2,697,629	333,584	4	114,991	33,932,464
63,988	434,966	590,106	54,758	35,038	154,829	143,475	5,001	19,462	4,492,202
77,112	409,955	1,527,287	522,202	45,086	1,558,934	1,438,481	563	54,655	11,718,536
71,378	44,956	24,818	24,277	349,845	89,014	1,191,094	349	-	2,766,175
8,904	424,250	58,727	10,083	11,793	48,116	218,714	1,341	3,625	2,833,388
2,389	29,027	12,098	69,141	22,174	51,894	34,449	785	1,746	392,991
3,866,850	11,088,039	25,452,166	8,410,357	14,696,930	19,934,811	11,987,392	169,643	992,845	176,904,139
4,536,530	11,690,286	26,935,996	9,441,931	16,904,101	21,311,779	13,636,574	1,180,081	1,052,632	189,302,195
11,419,294	17,552,763	34,743,715	15,407,130	23,182,595	30,831,429	23,837,557	3,607,765	2,064,824	355,218,769

VI. 기 타

22. 전력수급실적

23. 인원

22. 전력수급실적 (월별) Power Supply & Demand

(단위 : MW, %)

구 분	설비용량	공급능력	최대전력	발생일시		평균전력	설 비 예비력	설 비 예비율	공 급 예비력	공 급 예비율	평 균 부하율	평 균 이용률
2007	67,196	66,778	62,285	8.21(화)	15:00	46,019	4,911	7.9	4,493	7.2	73.9	67.4
2008	70,353	68,519	62,794	7.15(화)	15:00	48,082	7,559	12.0	5,725	9.1	76.6	66.5
2009	73,470	72,071	66,797	12.18(금)	18:00	49,498	6,673	10.0	5,274	7.9	74.1	67.4
2010	76,078	75,747	71,308	12.15(수)	18:00	54,185	4,770	6.7	4,439	6.2	76.0	71.2
2011	76,649	77,179	73,137	1.17(월)	12:00	56,723	3,512	4.8	4,042	5.5	77.6	71.5
2012	81,806	79,972	75,987	12.26(수)	11:00	58,012	5,819	7.7	3,985	5.2	76.3	71.1
2013	82,296	80,713	76,522	1.3(목)	11:00	59,035	5,774	7.5	4,191	5.5	77.1	67.9
2014	93,216	89,357	80,154	12.17(수)	11:00	59,586	13,062	16.3	9,203	11.5	74.3	63.9
2015	94,102	87,926	78,790	2.9(월)	11:00	60,284	15,312	19.4	9,136	11.6	76.5	61.7
2016	100,180	92,400	85,180	8.12(금)	17:00	61,694	15,000	17.6	7,220	8.5	72.4	58.3
2017	116,657	96,095	85,133	12.12(화)	10:00	63,181	31,524	37.0	10,962	12.9	74.2	54.0
2017 1-8	113,351	94,987	84,586	7.21(금)	17:00	63,266	28,765	34.0	10,401	12.3	74.8	55.4
8	113,351	95,125	84,489	8.07(월)	15:00	65,795	28,862	34.2	10,636	12.6	77.9	58.0
9	114,206	92,665	73,115	9.19(화)	16:00	61,383	41,091	56.2	19,550	26.7	84.0	53.7
10	115,249	88,736	70,113	10.10(화)	17:00	56,970	45,136	64.4	18,623	26.6	81.3	49.4
11	116,278	92,807	77,605	11.24(금)	10:00	63,957	38,673	49.8	15,202	19.6	82.4	55.0
12	116,657	96,095	85,133	12.12(화)	10:00	69,720	31,524	37.0	10,962	12.9	81.9	59.8
2018 1-8	117,205	99,570	92,478	7. 24(화)	17:00	65,811	24,727	26.7	7,092	7.7	71.2	55.8
1	116,428	99,147	87,247	1.25(목)	17:00	71,668	29,181	33.4	11,900	13.6	82.1	61.6
2	116,428	101,148	88,238	2. 6(화)	10:00	69,017	28,190	31.9	12,910	14.6	78.2	59.3
3	116,747	90,761	78,855	3. 8(목)	11:00	63,436	37,892	48.1	11,906	15.1	80.4	54.3
4	116,747	84,634	70,520	4. 5(목)	11:00	59,860	46,227	65.6	14,114	20.0	84.9	51.3
5	117,589	82,000	73,173	5. 17(목)	17:00	59,466	44,416	60.7	8,827	12.1	81.3	50.5
6	117,111	87,256	76,606	6. 25(월)	17:00	61,725	40,505	52.9	10,650	13.9	80.6	52.7
7	117,205	99,570	92,478	7. 24(화)	17:00	69,834	24,727	26.7	7,092	7.7	75.5	59.4
8	117,840	100,250	91,548	8.14(화)	17:00	71,472	26,292	28.7	8,702	9.5	78.1	60.6

※ 기울임체는 잠정실적

주1) 상기 실적은 최대전력 발생시점 기준임. 단, 평균전력, 평균부하율, 평균이용율은 최대전력 발생시점 기준이 아닌 해당월 전체 평균값임

주2) 설비예비율[%] = (설비용량-최대전력) / 최대전력×100

주3) 공급예비율[%] = (공급능력-최대전력) / 최대전력×100

주4) 부하율 [%] = (평균전력 / 최대전력)×100

주5) 이용률 [%] = (평균전력 / 설비용량)×100

22-1. 전력수급실적 (일별)

Power Supply & Demand by Day

구 분	설비용량	공급능력	최대전력	설 비 예비력	설 비 예비율	공 급 예비력	공 급 예비율
08월 01일 수	117,840	96,321	82,486	35,354	42.9	13,835	16.8
08월 02일 목	117,840	97,975	82,283	35,557	43.2	15,692	19.1
08월 03일 금	117,840	99,023	81,589	36,251	44.4	17,434	21.4
08월 04일 토	117,840	95,423	74,087	43,753	59.1	21,336	28.8
08월 05일 일	117,840	95,002	74,791	43,049	57.6	20,211	27.0
08월 06일 월	117,840	99,237	88,816	29,024	32.7	10,421	11.7
08월 07일 화	117,840	99,399	88,893	28,947	32.6	10,506	11.8
08월 08일 수	117,840	99,829	88,955	28,885	32.5	10,874	12.2
08월 09일 목	117,840	99,902	88,582	29,258	33.0	11,320	12.8
08월 10일 금	117,840	100,189	87,807	30,033	34.2	12,382	14.1
08월 11일 토	117,840	90,671	75,167	42,673	56.8	15,504	20.6
08월 12일 일	117,840	90,835	73,509	44,331	60.3	17,326	23.6
08월 13일 월	117,840	100,194	91,405	26,435	28.9	8,789	9.6
08월 14일 화	117,840	100,250	91,548	26,292	28.7	8,702	9.5
08월 15일 수	117,840	98,106	83,275	34,565	41.5	14,831	17.8
08월 16일 목	117,840	99,943	88,720	29,120	32.8	11,223	12.6
08월 17일 금	117,840	99,458	80,289	37,551	46.8	19,169	23.9
08월 18일 토	117,840	93,030	67,131	50,709	75.5	25,899	38.6
08월 19일 일	117,840	93,003	66,730	51,110	76.6	26,273	39.4
08월 20일 월	117,840	99,274	83,917	33,923	40.4	15,357	18.3
08월 21일 화	117,840	98,147	84,025	33,815	40.2	14,122	16.8
08월 22일 수	117,840	97,791	87,911	29,929	34.0	9,880	11.2
08월 23일 목	117,840	98,679	84,786	33,054	39.0	13,893	16.4
08월 24일 금	117,840	98,764	79,844	37,996	47.6	18,920	23.7
08월 25일 토	117,840	91,111	68,483	49,357	72.1	22,628	33.0
08월 26일 일	117,840	89,602	61,434	56,406	91.8	28,168	45.9
08월 27일 월	117,840	98,259	77,224	40,616	52.6	21,035	27.2
08월 28일 화	117,840	98,287	79,359	38,481	48.5	18,928	23.9
08월 29일 수	117,840	97,798	80,284	37,556	46.8	17,514	21.8
08월 30일 목	117,996	97,129	81,281	36,715	45.2	15,848	19.5
08월 31일 금	117,996	97,053	77,420	40,576	52.4	19,633	25.4

※ 음영부분은 일별 최대전력 중 가장 높은 수치임

23. 인원 (회사별)
Employees

구 분	한 전											
	임원	직속기구	기획본부	관리본부	기술본부	사업총괄 본부	건설본부	원전수출 본부	해외사업 본부	-		
2010	7	265	193	481	694	14,424	1,152	-	270	-		
2011	6	214	198	484	586	14,071	1,152	141	243	-		
구 분	임원	직속기구	기획본부	경영지원 본부	기술ENG 본부	조달 본부	개발사업 본부	마케팅& 운영본부	원전수출 본부	해외사업 본부		
2012	7	276	201	509	890	111	1,060	13,572	175	323		
구 분	임원	직속기구	기획본부	관리본부	영업본부	신성장 동력본부	전력 계통본부	원전 수출본부	해외 사업본부	지역본부		
2013	7	105	233	631	159	860	1,042	201	380	13,906		
구 분	임원	직속기구	기획본부	관리본부	영업본부	협력안전 본부	신성장동력 본부	전력계통 본부	해외 사업본부	원전수출 본부	지역본부	
2014	7	103	203	767	149	79	777	1,042	323	220	14,124	
구 분	임원	직속기구	기획본부	관리본부	영업본부	상생협력 본부	기술본부	전력계통 본부	해외 사업본부	원전수출 본부	지역본부	
2015	6	163	227	986	153	74	765	1,042	323	231	14,123	
2016	6	142	238	746	167	126	1,020	1,072	303	270	14,769	
2017	8	7	127	234	516	189	129	1,053	1,099	336	279	15,061
	9	7	127	235	519	196	130	1,069	1,081	333	279	14,790
	10	7	127	235	524	213	130	1,063	1,079	337	280	14,816
	11	6	127	235	524	196	130	1,065	1,077	334	277	14,826
	12	4	127	235	1,144	196	130	1,066	1,077	334	277	15,010
2018	1	4	130	237	526	201	132	1,076	1,111	338	276	15,561
	2	4	126	229	577	200	128	1,070	1,107	327	275	15,513
	3	4	126	227	597	199	128	1,057	1,072	322	274	15,159
	4	5	125	226	598	198	127	1,056	1,073	318	272	15,153
	5	5	125	225	597	198	126	1,055	1,074	319	270	15,235
	6	4	125	226	1,207	197	125	1,057	1,072	319	269	15,224
구 분	임원	직속기구	기획본부	관리본부	영업본부	상생발전 본부	기술혁신 본부	전력그리드 본부	해외 사업본부	원전사업 본부	지역본부	
2018	7	6	146	258	675	208	123	1,153	1,134	324	274	17,485
	8	7	146	258	675	209	123	1,157	1,131	324	276	17,469

주1) 발전부문 및 전력거래소 분리 (2001. 4. 2)

주2) 2018년 7월 이후 별정·청경 포함

주3) 파견자(미전적자)는 한전에 포함

(단위 : 명, %)

소계	발전자회사 및 거래소									합 계	증감률	
	남 동	중 부	서 부	남 부	동 서	수력 원자력	발전 소계	전력 거래소	계		한전	전 체
17,486	1,768	1,923	1,684	1,668	1,828	6,924	16,015	280	16,075	33,561	-2.2	-1.2
17,095	1,701	1,944	1,623	1,663	1,808	7,996	16,003	290	17,025	34,120	-2.2	1.7
소계	남 동	중 부	서 부	남 부	동 서	수력 원자력	발전 소계	전력 거래소	계	합 계	한전	전 체
17,124	1,804	2,043	1,745	1,811	1,988	8,367	17,758	290	18,048	35,172	0.2	3.1
소계	남 동	중 부	서 부	남 부	동 서	수력 원자력	발전 소계	전력 거래소	계	합 계	한전	전 체
17,524	1,995	2,008	1,850	1,872	1,925	8,682	18,332	319	18,651	36,175	2.3	2.9
소계	남 동	중 부	서 부	남 부	동 서	수력 원자력	발전 소계	전력 거래소	계	합 계	한전	전 체
17,794	2,094	2,110	2,014	1,806	2,205	8,857	19,086	324	19,410	37,204	1.5	2.8
소계	남 동	중 부	서 부	남 부	동 서	수력 원자력	발전 소계	전력 거래소	계	합 계	한전	전 체
18,093	2,181	1,736	1,971	1,955	2,167	10,262	20,272	331	20,603	38,696	1.7	4.0
18,859	2,194	2,292	2,025	2,034	2,282	10,825	21,652	362	22,014	40,873	4.2	5.6
19,030	2,149	2,353	2,033	2,062	2,307	11,086	21,990	340	22,330	41,360	3.9	4.6
18,766	2,140	2,335	2,035	2,065	2,307	11,089	21,971	341	22,312	41,078	2.8	2.7
18,811	2,145	2,333	2,032	2,061	2,329	11,091	21,991	342	22,333	41,144	2.2	2.4
18,797	2,157	2,332	2,029	2,058	2,327	11,098	22,000	370	22,370	41,167	1.1	2.0
19,600	2,163	2,394	2,137	2,180	2,368	11,220	22,462	0	22,462	42,062	3.9	2.9
19,592	2,166	2,392	2,139	2,188	2,436	11,241	22,561	341	22,902	42,494	3.9	3.9
19,556	2,166	2,393	2,140	2,189	2,436	11,257	22,581	342	22,923	42,479	2.9	3.5
19,165	2,170	2,389	2,142	2,214	2,436	11,268	22,619	366	22,985	42,150	2.6	3.5
19,151	2,160	2,389	2,140	2,216	2,442	11,272	22,619	354	22,973	42,124	2.0	3.2
19,229	2,185	2,389	2,137	2,218	2,442	11,271	22,642	355	22,997	42,226	2.5	3.4
19,825	2,183	2,449	2,169	2,214	2,436	11,226	22,677	355	23,032	42,857	4.8	4.0
소계	남 동	중 부	서 부	남 부	동 서	수력 원자력	발전 소계	전력 거래소	계	합 계	한전	전 체
21,786	2,287	2,530	2,280	2,297	2,538	11,845	23,777	355	24,132	45,918	14.3	11.1
21,775	2,286	2,527	2,281	2,296	2,533	11,840	23,763	355	24,118	45,893	14.4	11.0

2018 전력통계속보 (제 478호)

등록번호 : 2018-70ES-정0007

창간일 : 1979년 1월

발행일 : 2018년 9월 28일

발행처/인 : 한국전력공사 경영혁신처

편집인 : 출자관리부

차장 라홍욱 ☎ 061)345-3326

대리 장지훈 ☎ 061)345-3327

전력통계에 관한 정보는 한국전력공사 홈페이지
(<http://www.kepco.co.kr>) 지식센터/전기자료에서
확인하실 수 있습니다.