

Profile of Orange County

Southern California Association of Governments' (SCAG) Regional Council includes 67 districts which represent 191 cities in the SCAG region.



This profile report was prepared by the Southern California Association of Governments and shared with Orange County. SCAG provides local governments with services including planning data and information, technical and planning assistance (i.e. GIS training and growth visioning), and analyzing the impacts of infill development.



This Page Intentionally Left Blank

Table of Contents

- I. INTRODUCTION 1
- II. POPULATION 4
- III. HOUSEHOLDS 9
- IV. HOUSING 12
- V. TRANSPORTATION 18
- VI. EMPLOYMENT 19
- VII. RETAIL SALES 27
- VIII. EDUCATION 28
- IX. SCAG REGIONAL HIGHLIGHTS 31
- X. DATA SOURCES 32
- XI. METHODOLOGY 33
- XII. ACKNOWLEDGMENTS 37

This Page Intentionally Left Blank

I. Introduction

The purpose of this report is to provide current information and data for Orange County for planning and outreach efforts. Information on population, housing, transportation, employment, retail sales, and education can be utilized by the city to make informed planning decisions. The profile provides a portrait of the county and its changes since 2000, using average figures for SCAG Region as a comparative baseline. In addition, the most current data available for the region is also included in the Statistical Summary (page 3). This profile demonstrates the current trends occurring in Orange County.

The Southern California Association of Governments (SCAG) is the largest Metropolitan Planning Organization (MPO) in the nation. The SCAG region includes six counties (Imperial, Los Angeles, Orange, Riverside, San Bernardino and Ventura) and 191 cities. As the designated MPO, SCAG is mandated by federal and state law to research and develop a Regional Transportation Plan (RTP), which incorporates a Sustainable Communities Strategy (SCS). SCAG is currently undertaking a variety of planning and policy initiatives to foster a more sustainable Southern California.

In 2008, SCAG initiated the Local Profiles Project as a part of a larger initiative to provide a variety of services to its member cities and counties. Through extensive input from member jurisdictions, the inaugural Local Profiles Reports were released at the General Assembly in May 2009. The Profiles were last updated in 2011 to incorporate the 2010 Census information.

Local Profiles provide basic information about each member jurisdiction including, but not limited to, the following:

- How much growth in population has taken place since 2000?
- Has the local jurisdiction been growing faster or slower than the county or regional average?
- Have there been more or fewer school-age children?
- Have homeownership rates been increasing or decreasing?
- How and where do residents travel to work?
- How has the local economy been changing in terms of employment share by sectors?
- Have the local retail sales revenue recovered to pre-recession levels?

Answers to questions such as these provide a snapshot of the dynamic changes affecting each local jurisdiction.

New Features of the 2013 Report

Building on the foundation of the 2009 and 2011 Reports, the 2013 Local Profiles provide additional information related to income, housing, employment, and education. The expanded reports now also include the following: median household income, single-family and multi-family permits, types and age of the housing stock, foreclosures, major work destinations for residents, and educational attainment for residents. This additional information helps to provide a more complete profile of local jurisdictions.

Factors Affecting Local Changes Reflected in the 2013 Report

Overall, member jurisdictions since 2000 were impacted by a variety of factors at the national, regional and local levels. For example, the vast majority of member jurisdictions included in the 2013 Local Profiles reflect the national demographic trends toward an older and a more diverse population. Evidence of the slow process towards economic recovery is also apparent through gradual increases in employment, retail sales, building permits and home prices. Work destinations and commute times correlate with regional development patterns and the geographical location of the local jurisdictions, particularly in relation to the regional transportation system.

Uses of the Local Profiles

Following release at the SCAG General Assembly, the Local Profiles were posted on the SCAG website and used by interested parties for a variety of purposes including, but not limited to the following:

- Data and communication resources for elected officials, businesses and residents
- Community planning and outreach
- Economic development
- Visioning initiatives
- Grant application support

The primary user groups of the Profiles include member jurisdictions and state and federal legislative delegates of Southern California. This profile report is a SCAG member benefit and the use of the data within this report is voluntary.

Report Organization

This profile report has three sections. The first section presents a Statistical Summary for Orange County. The second section provides detailed information organized by subject areas and includes brief highlights on the impacts of the recent recession and recovery at the regional level. The third section, Methodology describes technical considerations related to data definitions, measurement, and data sources.

2012 STATISTICAL SUMMARY

<i>Category</i>	<i>Orange County</i>	<i>SCAG Region</i>	<i>Orange County relative to SCAG Region*</i>
2012 Population	3,055,792	18,242,331	[16.8%]
2012 Median Age (Years)	36.7	35.2	1.5
2012 Hispanic	34.3%	46.4%	-12.1%
2012 Non-Hispanic White	42.5%	32.1%	10.4%
2012 Non-Hispanic Asian	18.7%	12.4%	6.3%
2012 Non-Hispanic Black	1.4%	6.3%	-4.9%
2012 Non-Hispanic American Indian	.2%	.2%	.0%
2012 Non-Hispanic All Other	2.9%	2.5%	.4%
2012 Number of Households	995,933	5,870,003	[17%]
2012 Average Household Size	3.0	3.2	0
2012 Median Household Income (\$)	71,193	57,465	13,728
2012 Number of Housing Units	1,052,361	6,356,479	[16.6%]
2012 Homeownership Rate	59.1%	54.3%	4.8%
2012 Median Existing Home Sales Price (\$)	422,000	323,000	99,000
2011 - 2012 Median Home Sales Price Change	-3.9%	6.4%	-10.3%
2012 Drove Alone to Work	81.6%	77.8%	3.8%
2012 Mean Travel Time to Work (minutes)	29	31.4	-2.4
2012 Number of Jobs	1,523,697	7,462,957	[20.4%]
2011 - 2012 Total Jobs Change	26,990	109,491	[24.7%]
2011 Average Salary per Job (\$)	53,307	49,468	3,839
2012 K-12 Public School Student Enrollment	503,736	3,096,034	16.3%

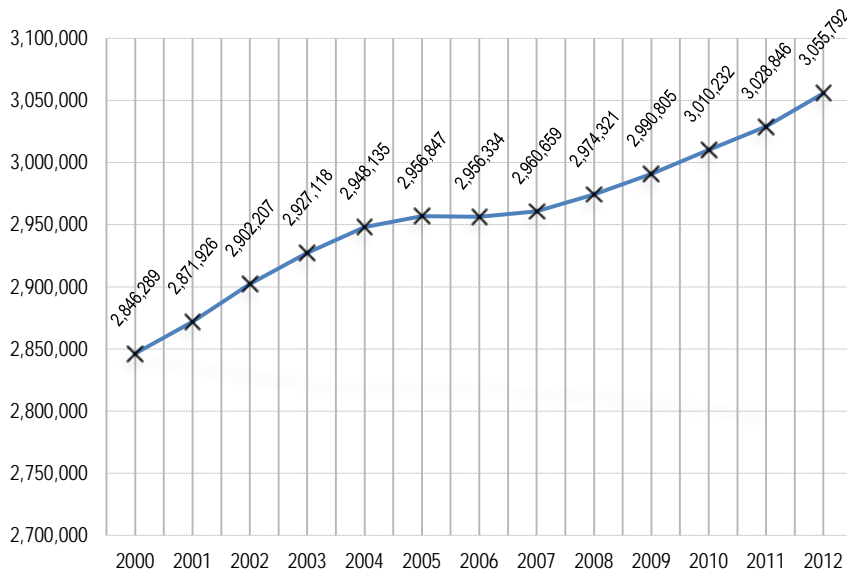
Sources: U.S. Census Bureau; Nielsen Co.; California Department of Finance; MDA Data Quick; and SCAG

* Numbers with [] represent Orange County's share of SCAG Region. The other numbers represent the difference between Orange County and SCAG Region.

Mapped jurisdictional boundaries are as of July 1, 2012 and are for visual purposes only. Report data, however, are updated according to their respective sources

II. Population (Orange County)* Population Growth

Population: 2000 - 2012



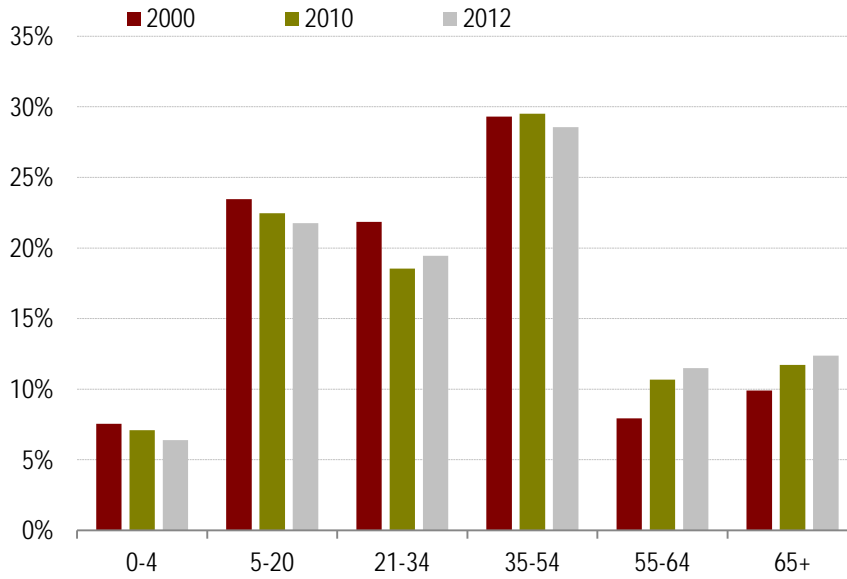
Sources: California Department of Finance, E-5, 2012

* The following charts in this report contain data for Orange County unless noted otherwise.

- Between 2000 and 2012, the total population of Orange County increased by 209,503 to 3,055,792 in 2012.
- During this 12-year period, the county's population growth rate of 7.4 percent was lower than the SCAG Region rate of 10.4 percent.
- In SCAG Region 16.8% of the total population is in Orange County.

Population by Age

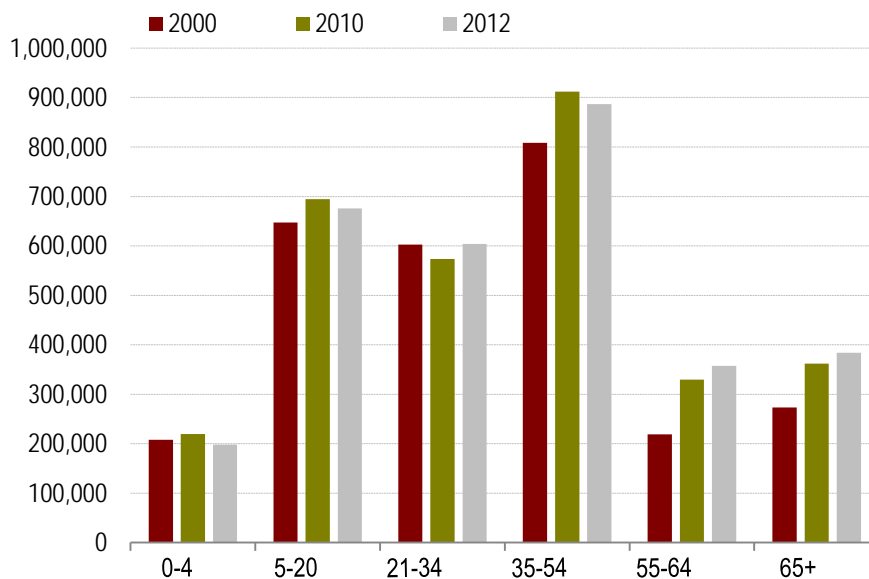
Population Share by Age: 2000, 2010, and 2012



Sources: 2000 and 2010 U.S. Decennial Census; Nielsen Co., 2012 (2012 estimate)

- Between 2000 and 2012, the age group 55-64 is projected to experience the largest increase in share, growing from 7.9 to 11.5 percent.
- The age group expected to experience the greatest decline, by share, is projected to be age group 21-34, decreasing from 21.8 to 19.4 percent.

Population by Age: 2000, 2010, and 2012

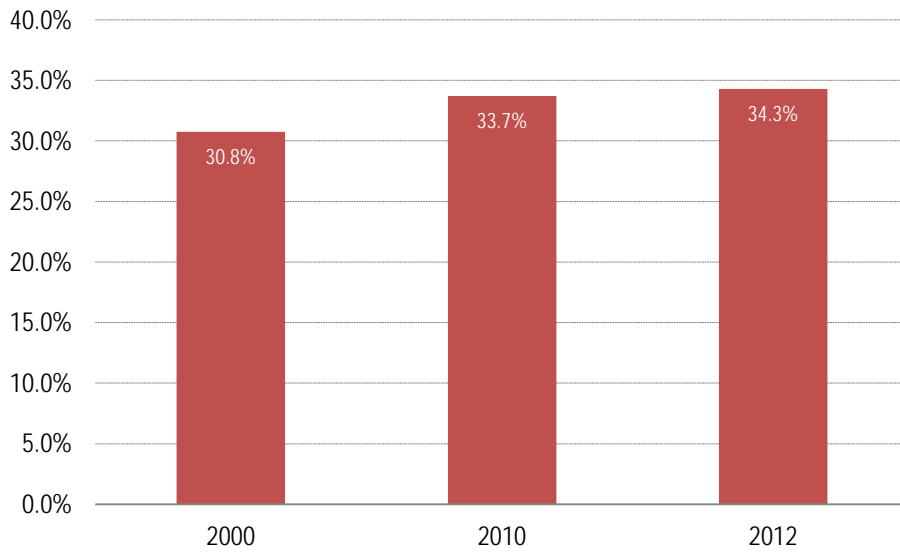


Sources: 2000 and 2010 U.S. Decennial Census; Nielsen Co., 2012 (2012 estimate)

- The age group 55-64 is expected to add the most population, with an increase of 138,062 people between 2000 and 2012.

Population by Race/Ethnicity

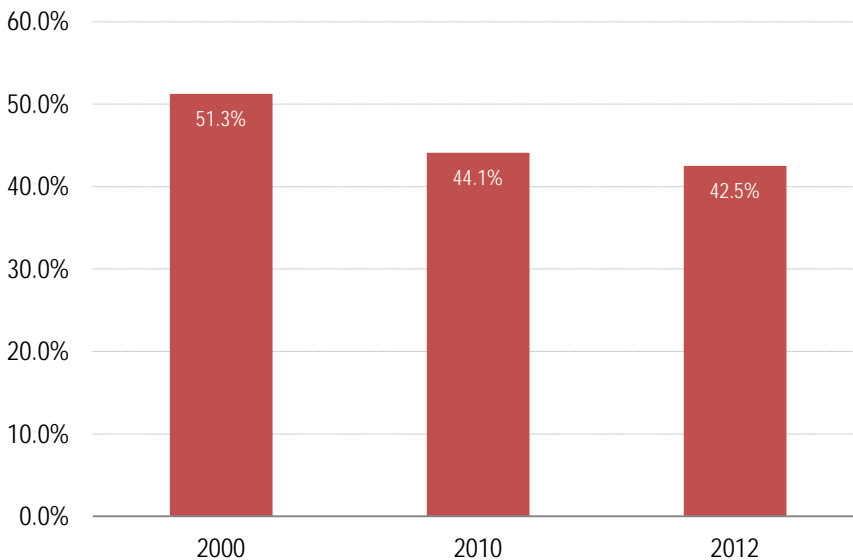
Hispanic or Latino of Any Race: 2000, 2010, and 2012



Sources: 2000 and 2010 U.S. Decennial Census; Nielsen Co., 2012

- Between 2000 and 2012, the share of Hispanic population in the county increased from 30.8 percent to 34.3 percent.

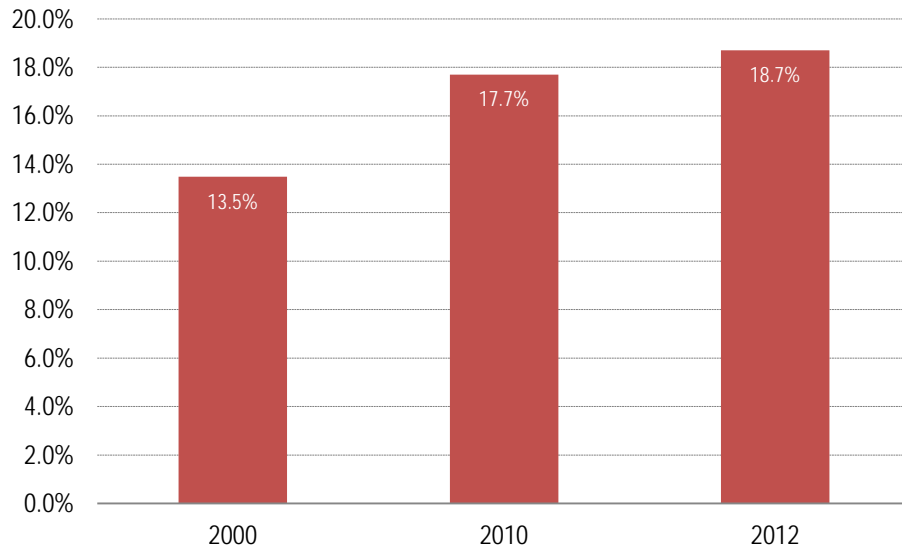
Non-Hispanic White: 2000, 2010, and 2012



Sources: 2000 and 2010 U.S. Decennial Census; Nielsen Co., 2012

- Between 2000 and 2012, the share of Non-Hispanic White population in the county decreased from 51.3 percent to 42.5 percent.

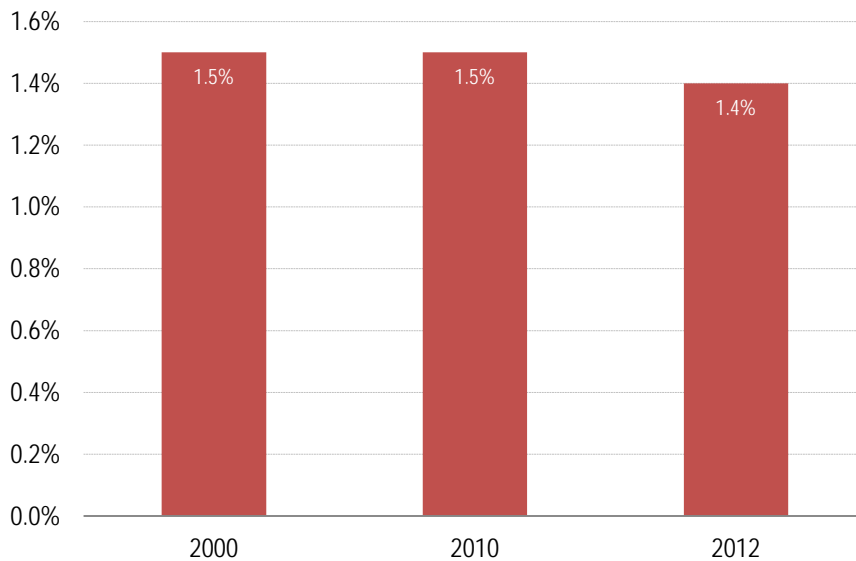
Non-Hispanic Asian: 2000, 2010, and 2012



Sources: 2000 and 2010 U.S. Decennial Census; Nielsen Co., 2012

- Between 2000 and 2012, the share of Non-Hispanic Asian population in the county increased from 13.5 percent to 18.7 percent.

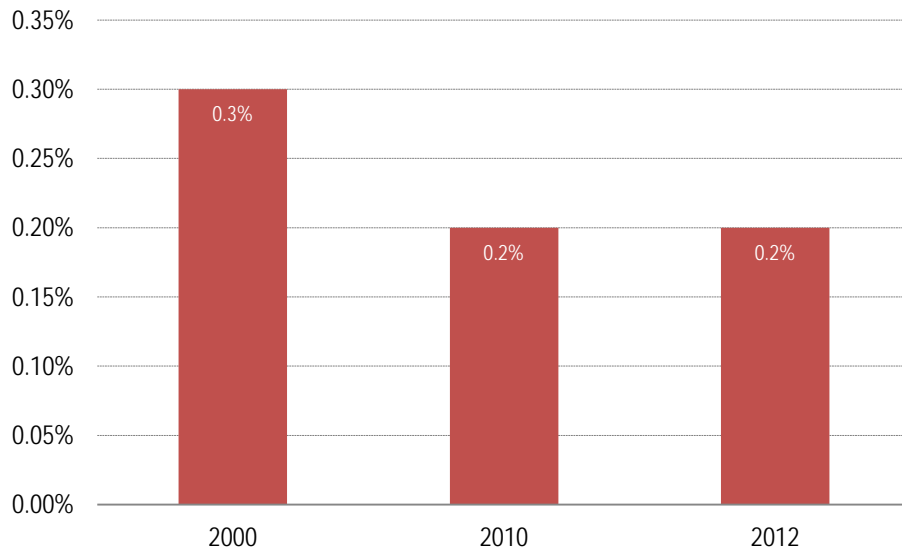
Non-Hispanic Black: 2000, 2010, and 2012



Sources: 2000 and 2010 U.S. Decennial Census; Nielsen Co., 2012

- Between 2000 and 2012, the share of Non-Hispanic Black population in the county decreased from 1.5 percent to 1.4 percent.

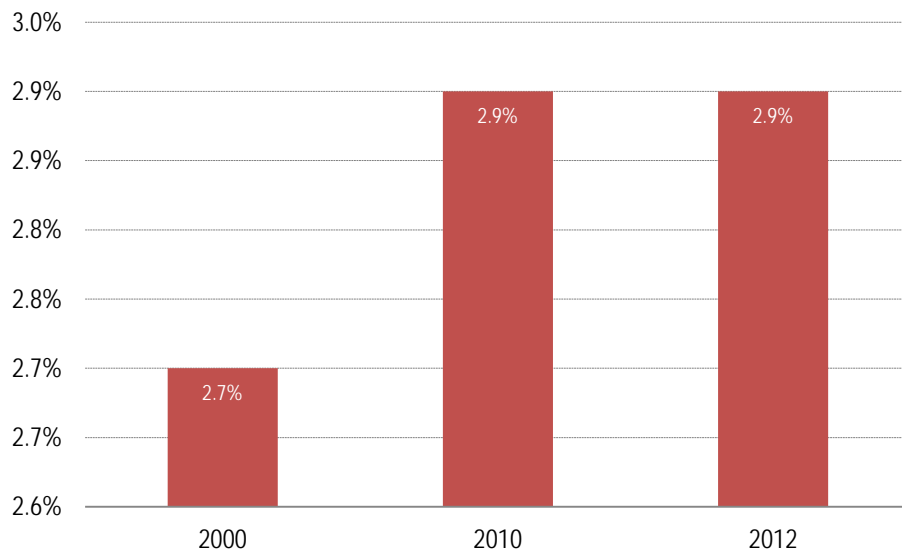
Non-Hispanic American Indian: 2000, 2010, and 2012



Sources: 2000 and 2010 U.S. Decennial Census; Nielsen Co., 2012

- Between 2000 and 2012, the share of Non-Hispanic American Indian population in the county decreased from 0.3 percent to 0.2 percent.

All Other Non-Hispanic: 2000, 2010, and 2012



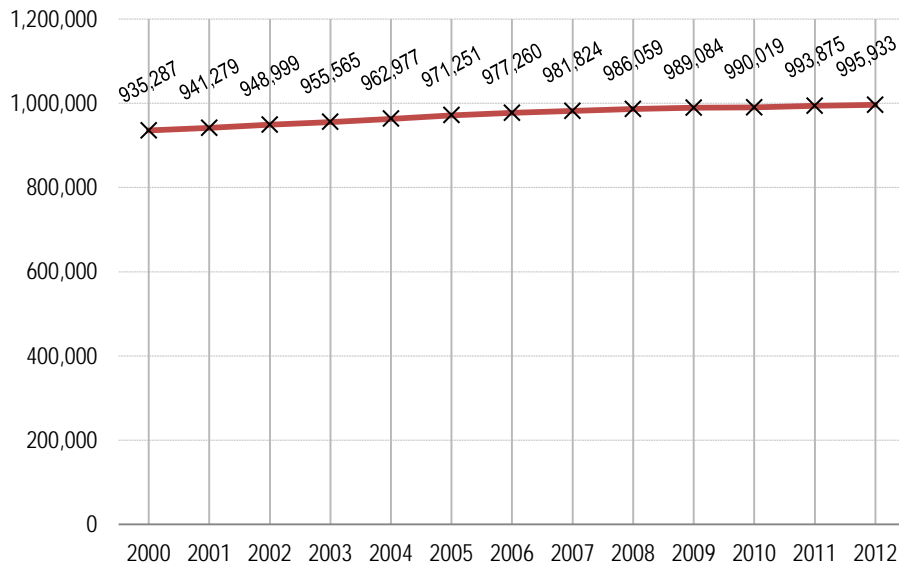
Sources: 2000 and 2010 U.S. Decennial Census; Nielsen Co., 2012

- Between 2000 and 2010, the share of Non-Hispanic All Other population group in the county increased from 2.7 percent to 2.9 percent
- Please refer to the Methodology section for definitions of the racial/ethnic categories.

III. Households

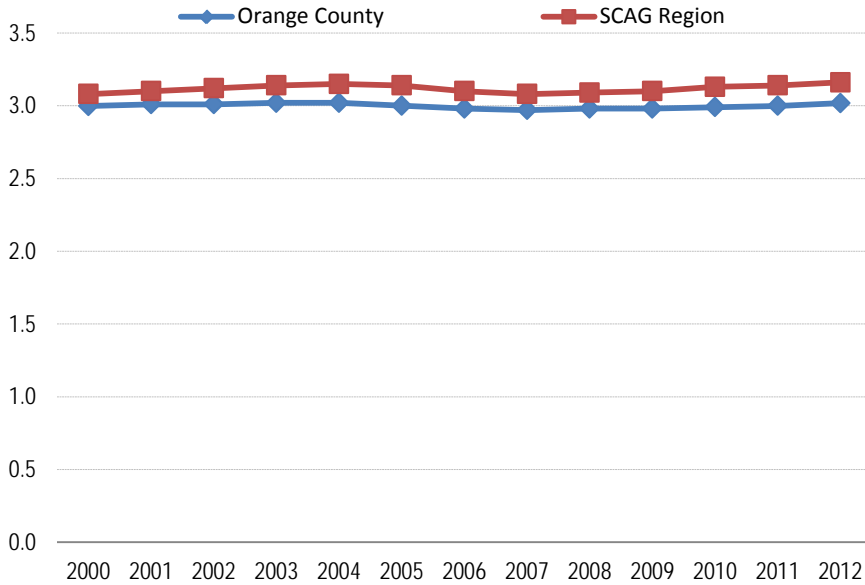
Number of Households (Occupied Housing Units)

Number of Households: 2000 - 2012



Sources: 2000 and 2010 U.S. Decennial Census; California Department of Finance, E-5, 2012

Average Household Size: 2000 - 2012

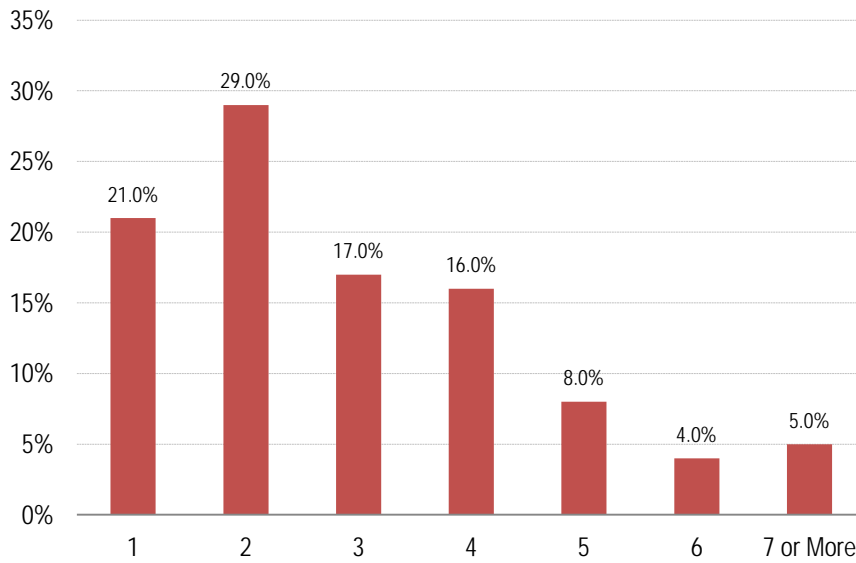


Source: California Department of Finance, E-5, 2012

- Between 2000 and 2012, the total number of households in Orange County increased by 60,646 units, or 6.5 percent.
- During this 12-year period, the county's household growth rate of 6.5 percent was lower than the SCAG region growth rate of 9 percent.
- 17 percent of SCAG Region's total number of households is in Orange County.
- In 2012, the county's average household size was 3.0, lower than the SCAG region average of 3.2.

Households by Size

Percent of Households by Household Size: 2012

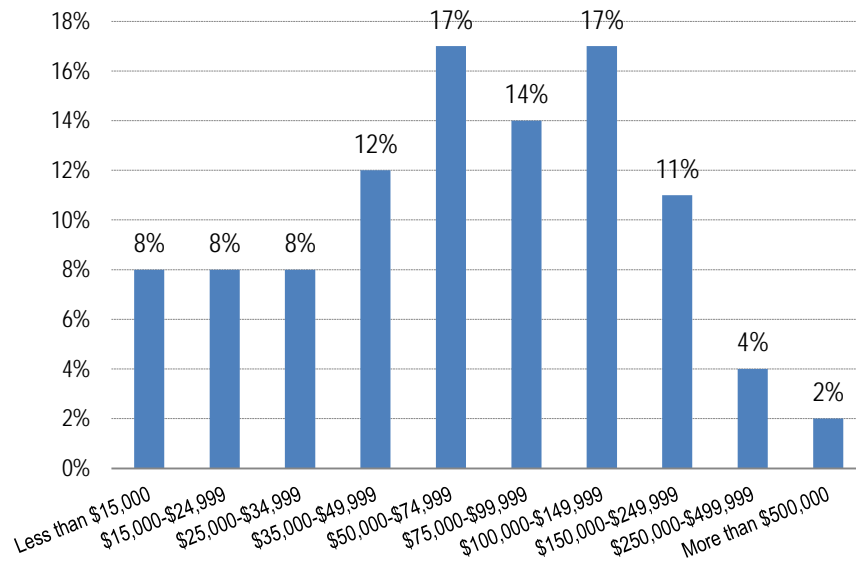


Source: Nielsen Co., 2012

- In 2012, 67 percent of all county households had 3 people or fewer.
- About 21 percent of the households were single-person households.
- Approximately 17 percent of all households in the county had 5 people or more.

Households by Income

Percent of Households by Household Income: 2012

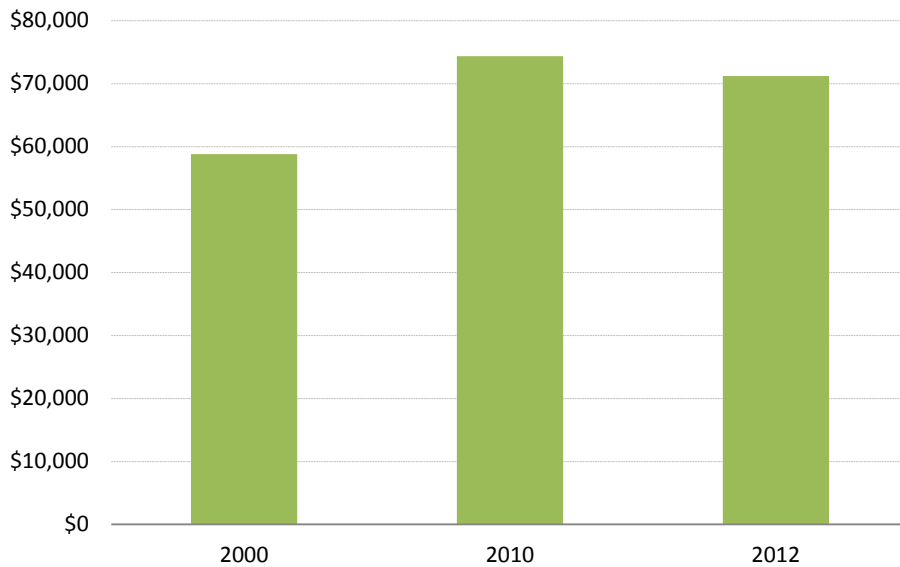


Source: Nielsen Co., 2012

- In 2012, 36 percent of households earned less than \$50,000 annually.
- Approximately 31 percent of the households earned between \$50,000 and \$99,999.

Household Income

Median Household Income: 2000, 2010, 2012

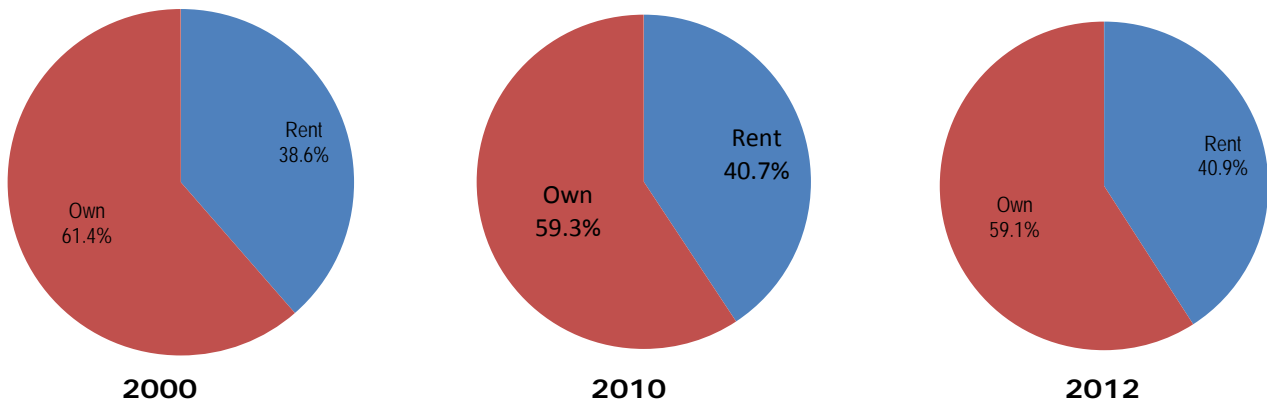


- From 2000 to 2012, the Median Household Income increased by \$12,373 annually.
- Note: Dollars are not constant.

Source: Nielsen Co., 2012

Renters and Homeowners

Percentage of Renters and Homeowners: 2000, 2010, 2012



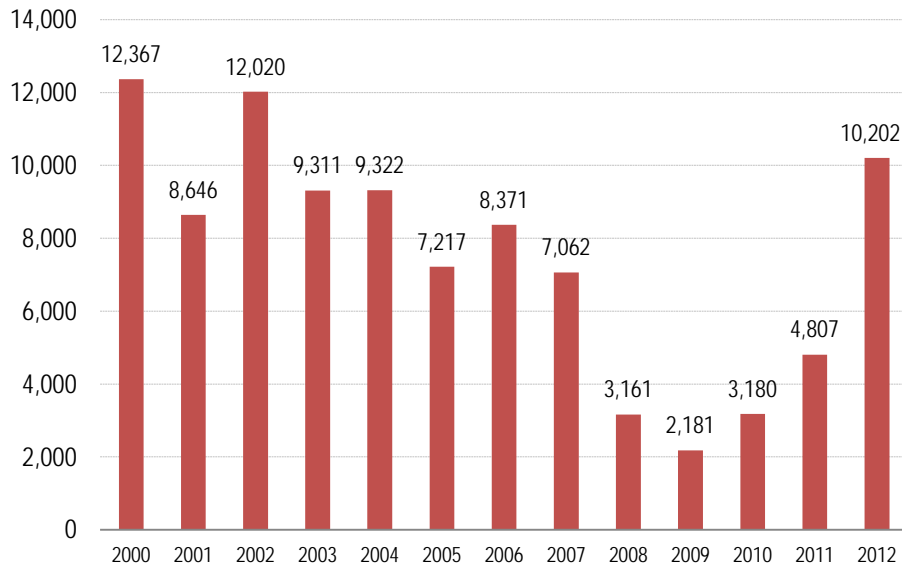
Sources: 2000 and 2010 U.S. Decennial Census; Nielsen Co., 2012

Between 2000 and 2012, homeownership rates decreased and the share of renters increased

IV. Housing

Total Housing Production

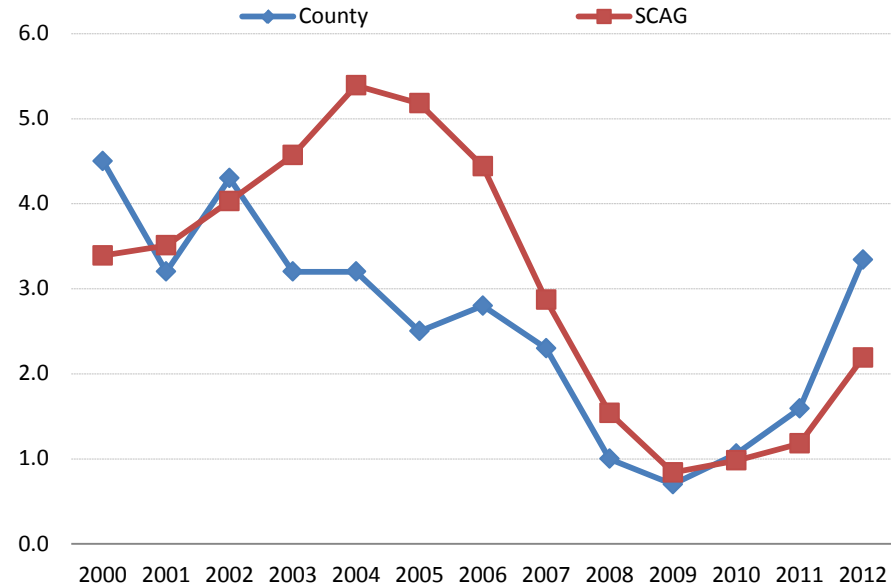
Total Permits Issued for all Residential Units: 2000 - 2012



Source: Construction Industry Research Board, 2000 - 2012

- Between 2000 and 2012, permits were issued for 97,847 new residential units.

Permits Issued per 1,000 Residents for Orange County: 2000 - 2012

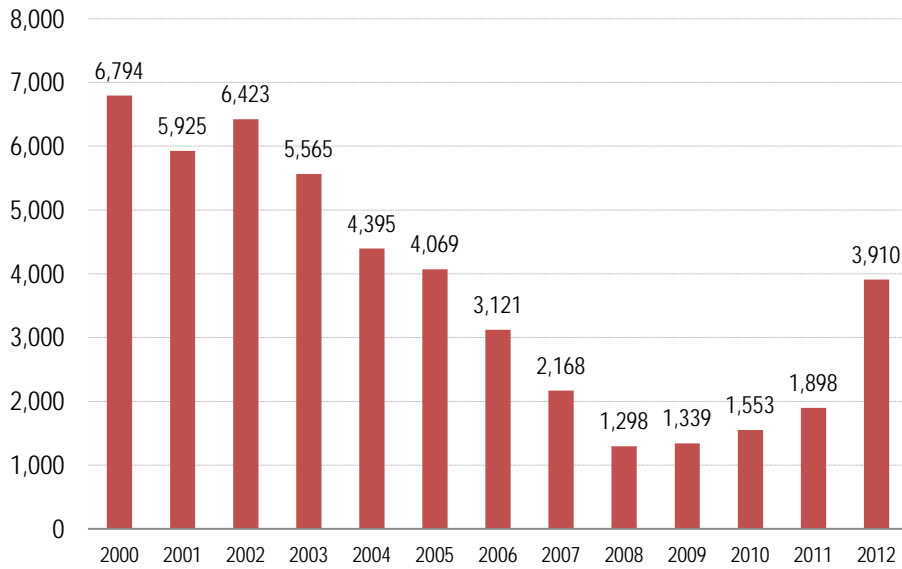


Sources: Construction Industry Research Board, 2000 - 2012; SCAG

- In 2000, Orange County had 4.5 permits per 1,000 residents compared to the overall SCAG region figure of 3.4 permits per 1,000 residents.
- For the county in 2012, the number of permits per 1,000 residents decreased to 3.3 permits. For the SCAG region overall, it decreased to 2.2 permits per 1,000 residents.

Single-Family Housing Production

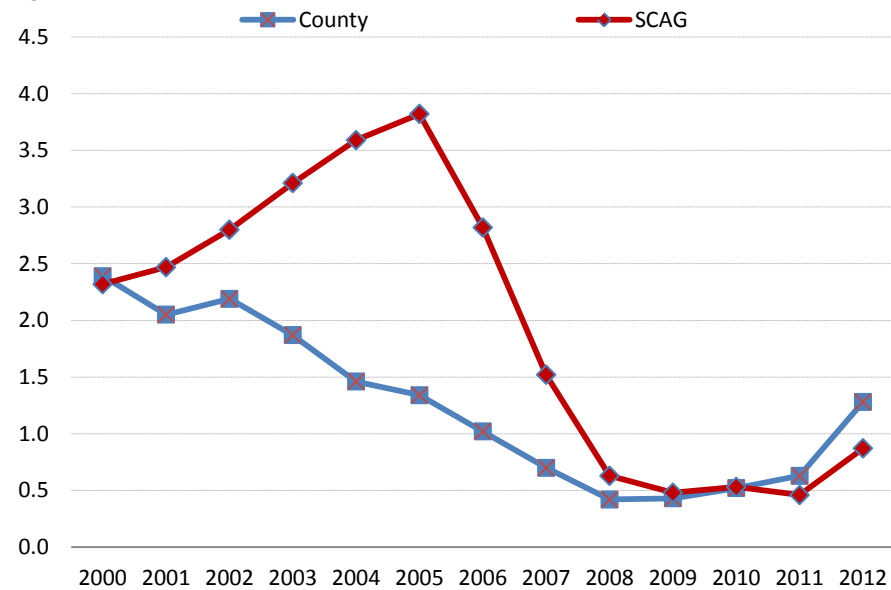
Single-Family Permits Issued: 2000 - 2012



Sources: Construction Industry Research Board, 2000 - 2012

- Between 2000 and 2012, permits were issued for 48,458 new single family homes.
- About 15.2 percent of these were issued in the last 3 years.

Single-Family Permits Issued per 1,000 Residents: 2000 - 2012

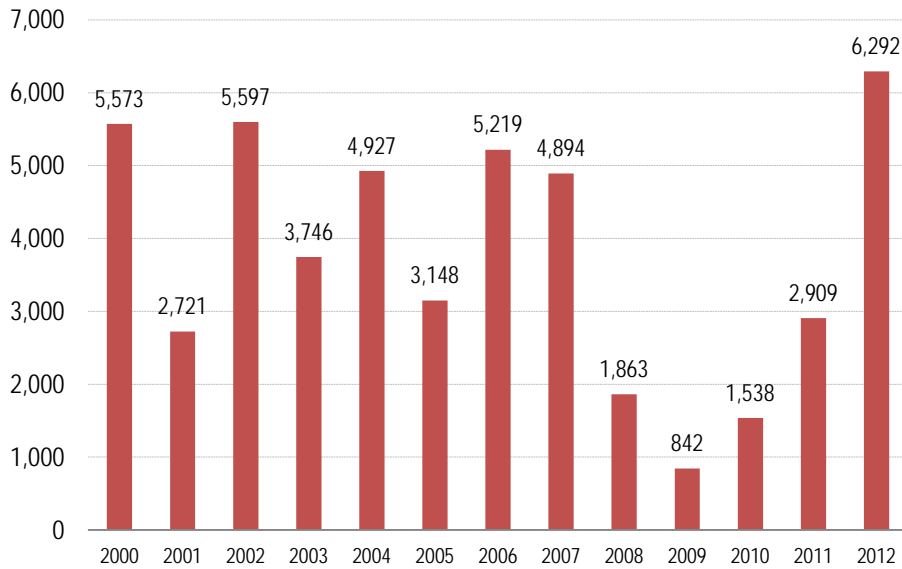


Sources: Construction Industry Research Board, 2000 - 2012

- In 2000, Orange County issued 2.4 permits per 1,000 residents compared to the overall SCAG region figure of 2.3 permits per 1,000 residents.
- For the county in 2012, the number of permits issued per 1,000 residents decreased to 1.3 permits. For the SCAG region overall, it decreased to 0.9 permits per 1,000 residents.

Multi-Family Housing Production

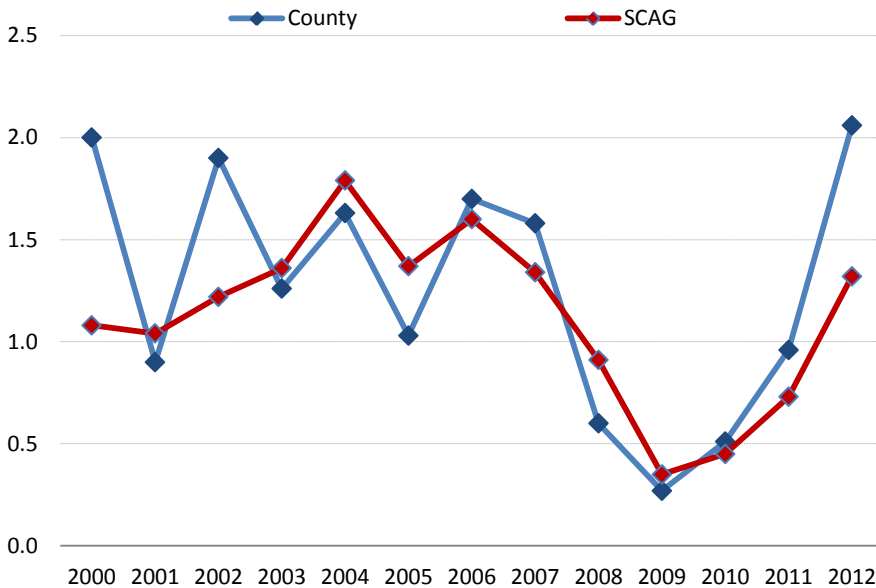
Multi-Family Permits Issued: 2000 - 2012



Sources: Construction Industry Research Board, 2000-2012

- Between 2000 and 2012, permits were issued for 49,269 new residential units.
- About 21.8 percent of these were issued in the last 3 years.

Multi-Family Permits Issued per 1,000 Residents: 2000 - 2012

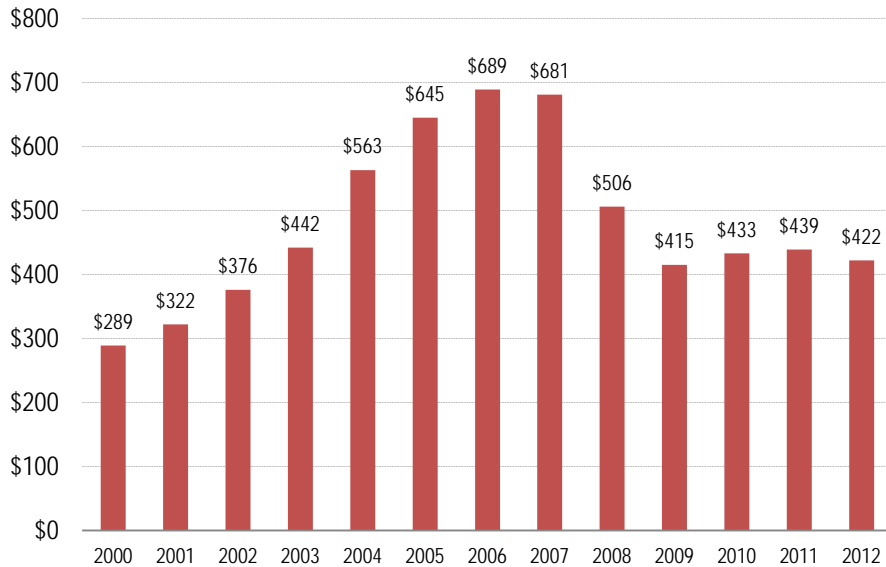


Sources: Construction Industry Research Board, 2000-2012

- In 2000, Orange County issued 2 permits per 1,000 residents compared to the overall SCAG region figure of 1.1 permits per 1,000 residents.
- For the county in 2012, the number of permits per 1,000 residents increased to 2.1 permits. For the SCAG region overall, it increased to 1.3 permits per 1,000 residents.

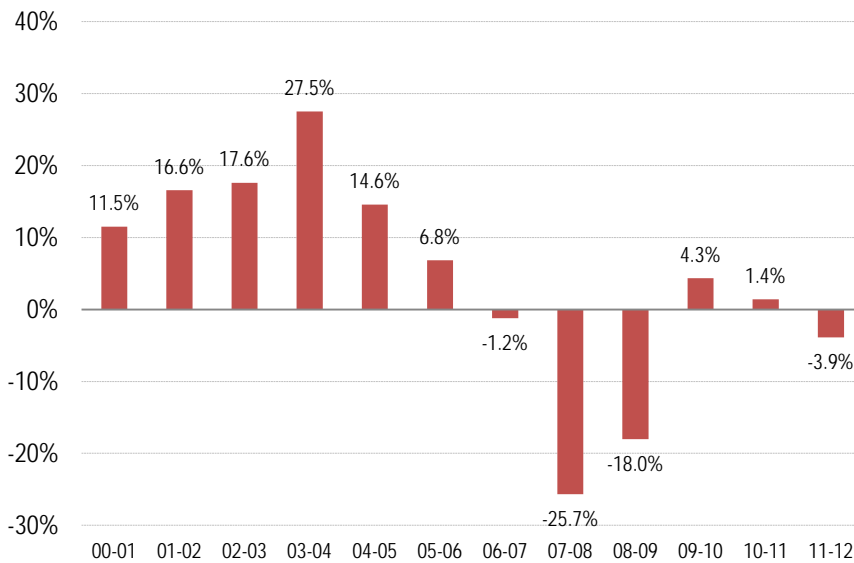
Home Sales Prices

Median Home Sales Price for Existing Homes: 2000 - 2012
(in \$ thousands)



Source: MDA Data Quick, 2012

Annual Median Home Sales Price Change for Existing Homes: 2000 - 2012



Source: MDA Data Quick, 2012

- Between 2000 and 2012, the median home sales price increased 45.9 percent from \$289,193 to \$422,000.
- Median home sales price decreased by 2.5 percent between 2010 and 2012.
- In 2012, the median home sales price in the county was \$422,000, \$422,000 higher than that in the SCAG region overall.
- Note: Median home sales price reflects resales of existing homes and simply provides guidance on the market values of homes sold in the county.
- Between 2000 and 2012, annual home sales price change ranged between -25.7 and 27.5 percent.
- Between 2010 and 2012, the change in annual home sales prices was between 1.4 and 4.3 percent.

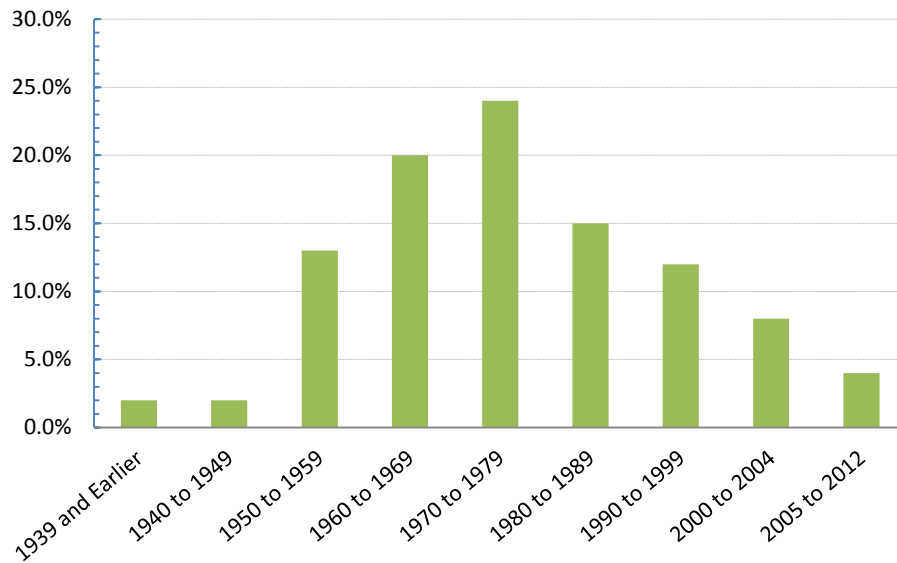
Housing Units by Housing Type: 2012

Housing Type	Number of Units	Percent of Total Units
Single Family Detached	535,361	50.9 %
Single Family Attached	127,669	12.1 %
Multi-family 2 to 4 units	91,781	8.7 %
Multi-family 5 units plus	264,026	25.1 %
Mobile Home	33,524	3.2 %
Total	1,052,361	100 %

- The most common housing type is Single Family Detached.
- Approximately 63 percent were single family homes and 33.8 percent were multi-family homes.

Source: California Department of Finance, E-5, 2012

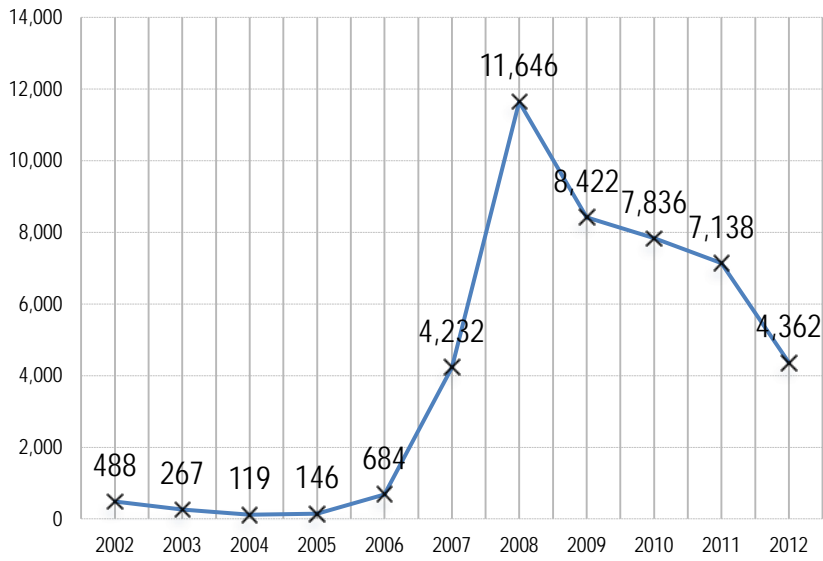
Age of Housing Stock



Source: Neilsen, Co., 2012

- 37 percent of the housing stock was built before 1970.
- 63 percent of the housing stock was built between 1970 to 2012.
- The age of housing stock data partly reflects the local development history.

Foreclosures



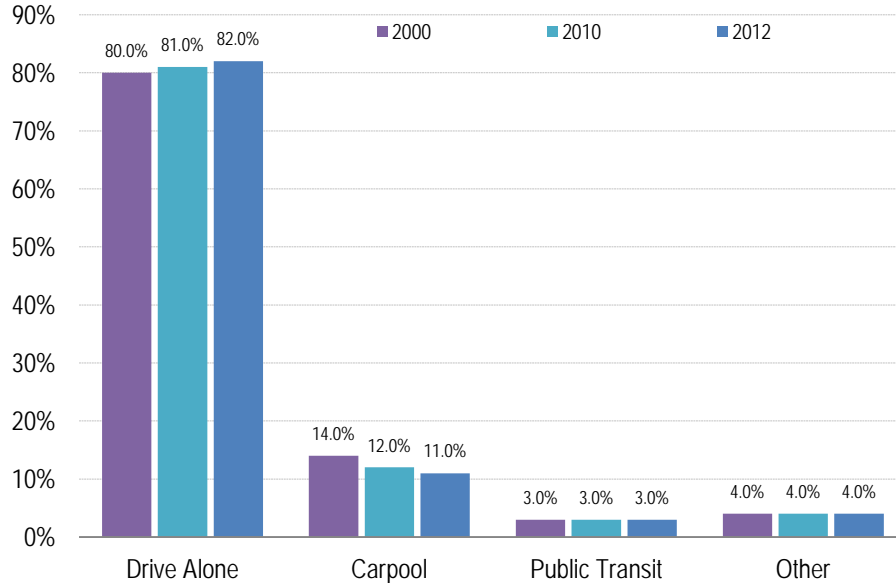
Source: MDA Data Quick, 2012

- There were a total of 4,362 foreclosures in 2012.
- Between 2007 and 2012, there were a total of 43,636 foreclosures.

V. Transportation

Journey to Work for Residents

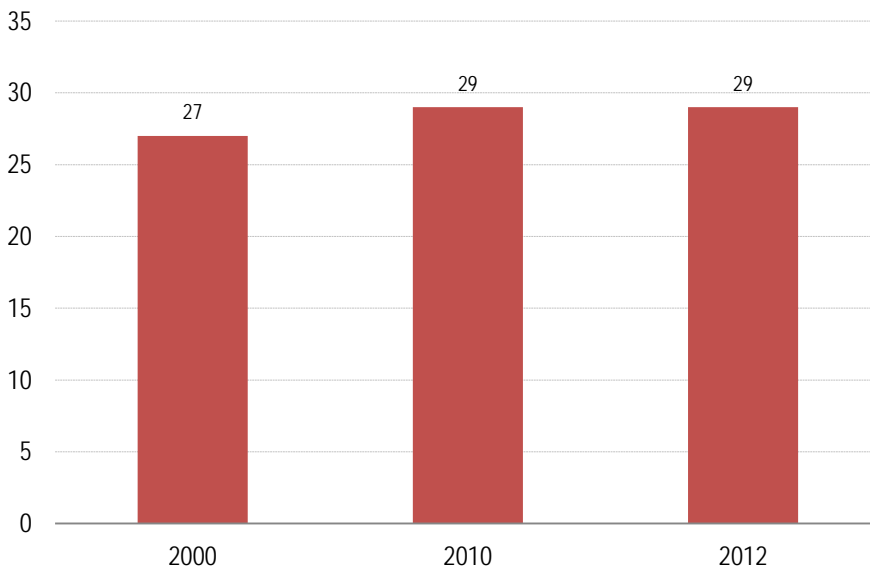
Transportation Mode Choice: 2000, 2010, 2012



Sources: 2000 and 2010 U.S. Decennial Census; Nielsen Co., 2012

- Between 2000 and 2012, the greatest change occurred in the percentage of individuals who traveled to work by carpool; this share decreased by 2.7 percentage points.

Average Travel Time: (minutes) 2000, 2010, 2012



Sources: 2000 and 2010 U.S. Decennial Census; Nielsen Co., 2012

- Between 2000 and 2012, the average travel time to work increased by approximately 2 minutes.

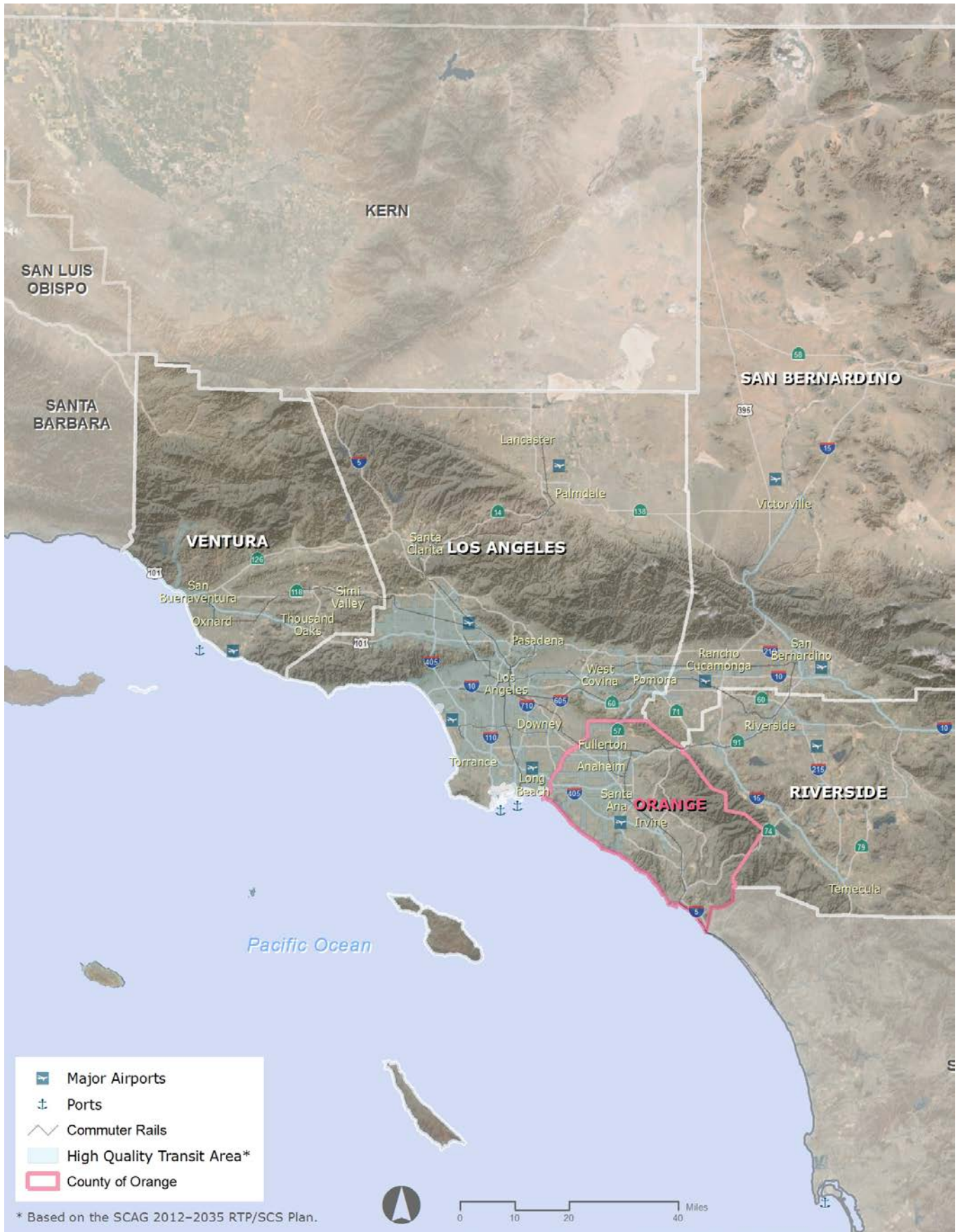
VI. Employment

Top 10 Places Where Residents Commute to Work: 2010

Local Jurisdiction		Number of Commuters	Percent of Total Commuters
1.	Orange County	764,277	64.39 %
2.	Los Angeles County	274,735	23.15 %
3.	San Diego County	33,271	2.80 %
4.	San Bernardino County	32,643	2.75 %
5.	Riverside County	32,011	2.70 %
6.	Ventura County	7,103	.60 %
7.	Santa Clara County	6,213	.52 %
8.	San Francisco County	4,123	.35 %
9.	Alameda County	3,586	.30 %
10.	Kern County	3,171	.27 %
Other Destinations		25,802	2.17 %

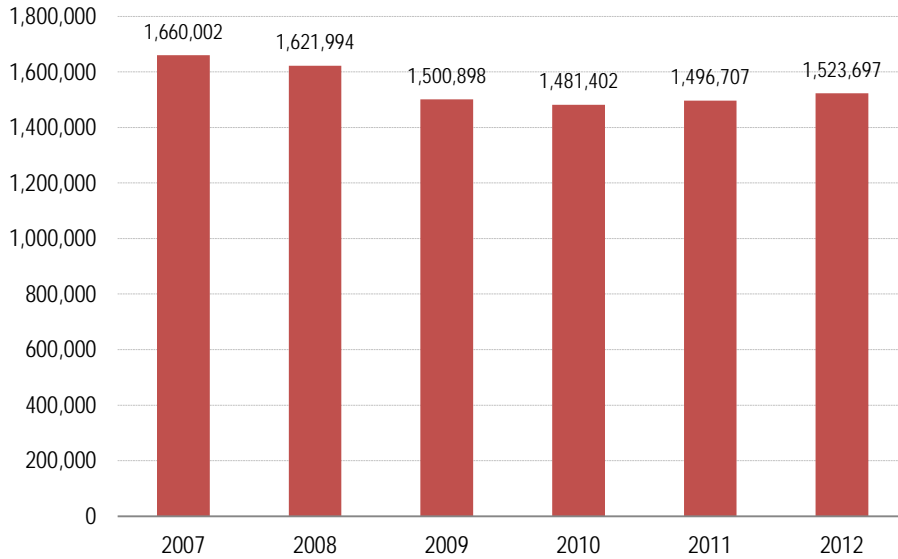
Source: U.S. Census Bureau, 2012; LODES Data; Longitudinal-Employer Household Dynamics Program

- This table identifies the top 10 locations where residents from the Orange County commute to work.
- 64.39% work in the local jurisdiction where they live, while 35.61% commute to other places.





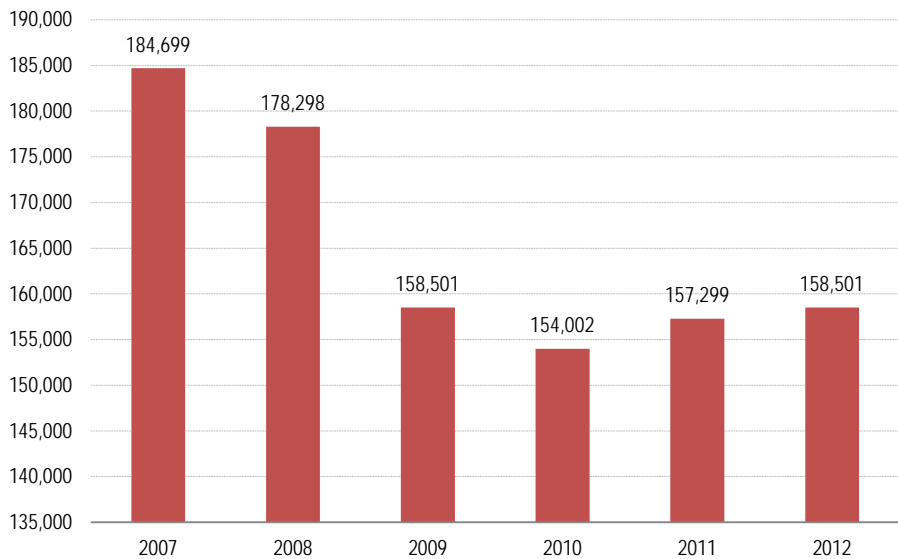
Total Jobs: 2007 - 2012



Sources: California Employment Development Department, 2007 - 2012; InfoGroup; and SCAG

- Total jobs include wage and salary jobs and jobs held by business owners and self-employed persons. The total job count does not include unpaid volunteers or family workers, and private household workers.
- In 2012, total jobs in Orange County numbered 1,523,697, a decrease of 8.2 percent from 2007.

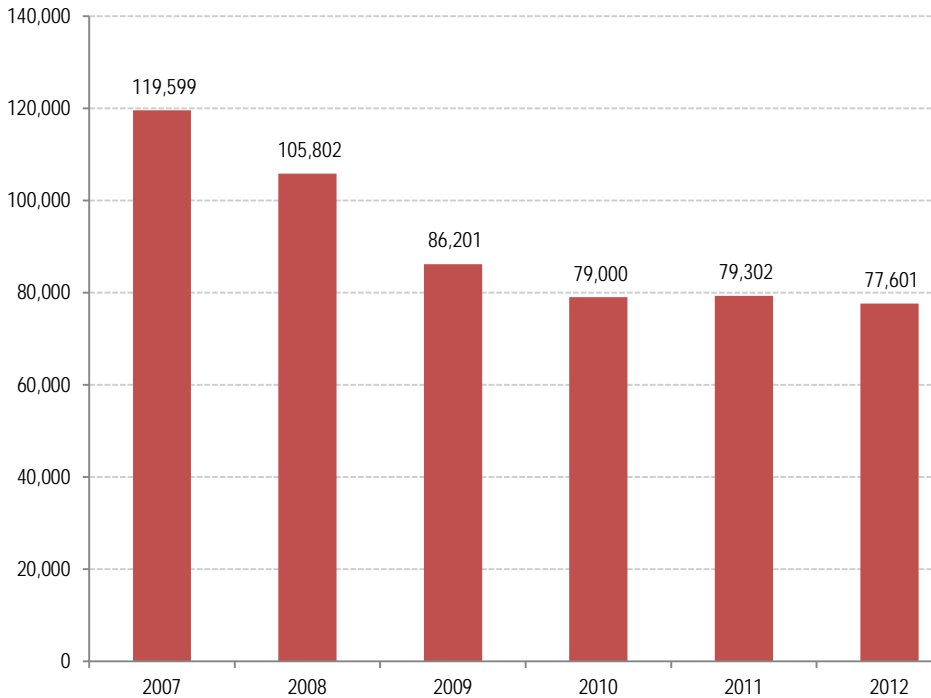
Jobs in Manufacturing: 2007 - 2012



Sources: California Employment Development Department, 2007 - 2012; InfoGroup; and SCAG

- Manufacturing jobs include those employed in various sectors including food, apparel, metal, petroleum and coal, machinery, computer and electronic product, and transportation equipment.
- Between 2007 and 2012, the number of manufacturing jobs in the county decreased by 14.2 percent.

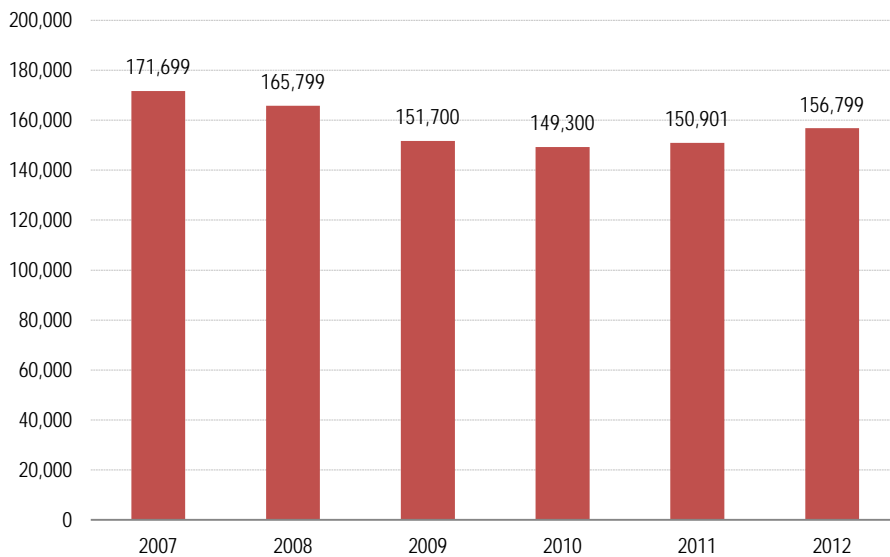
Jobs in Construction: 2007 - 2012



Sources: California Employment Development Department, 2007 - 2012; InfoGroup; and SCAG

- Construction jobs include those engaged in both residential and non-residential construction.
- Between 2007 and 2012, construction jobs in the county decreased by 35.1 percent.

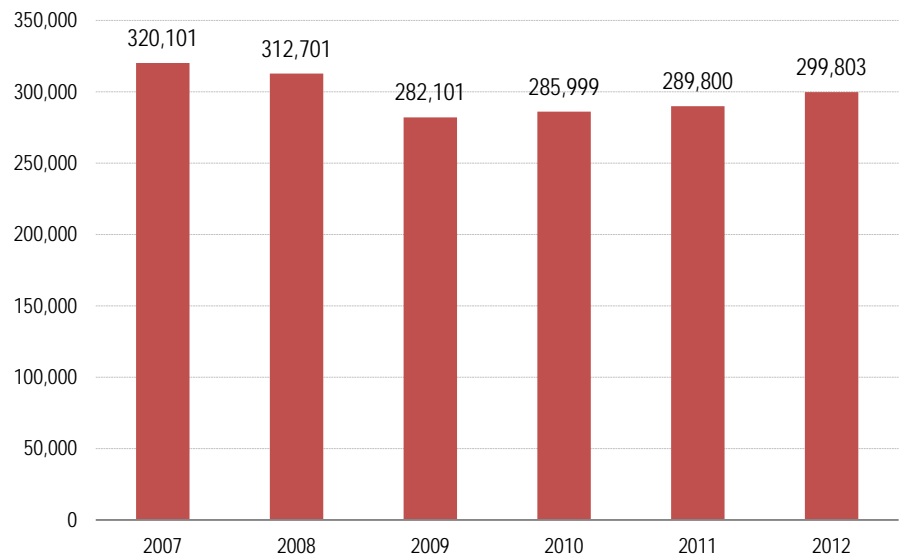
Jobs in Retail Trade: 2007 - 2012



Sources: California Employment Development Department, 2007 - 2012; InfoGroup; and SCAG

- Retail Trade jobs include those at various retailers including motor vehicle and parts dealers, furniture, electronics and appliance, building material, food and beverage, clothing, sporting goods, books, and office supplies.
- Between 2007 and 2012, the number of retail trade jobs in the county decreased by 8.7 percent.

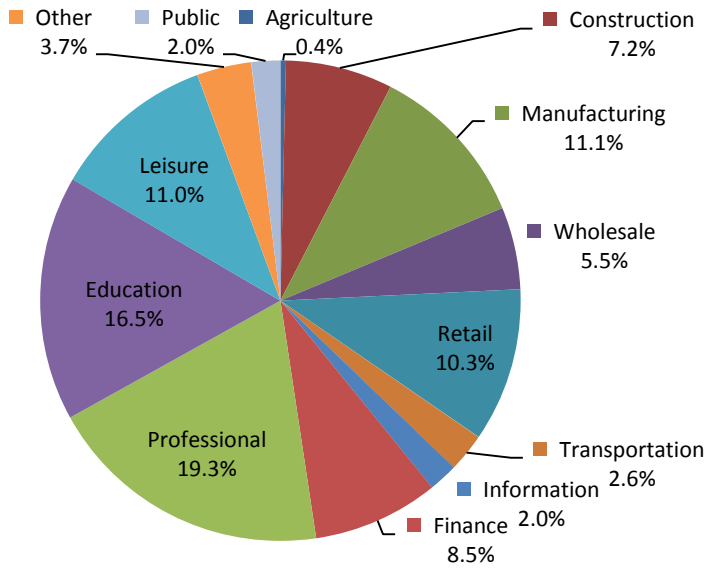
Jobs in Professional and Management: 2007 - 2012



Sources: California Employment Development Department, 2007 - 2012; InfoGroup; and SCAG

- Jobs in the professional and management sector include those employed in professional and technical services, management of companies, and administration and support.
- Between 2007 and 2012, the number of professional and management jobs in the county decreased by 6.3 percent.

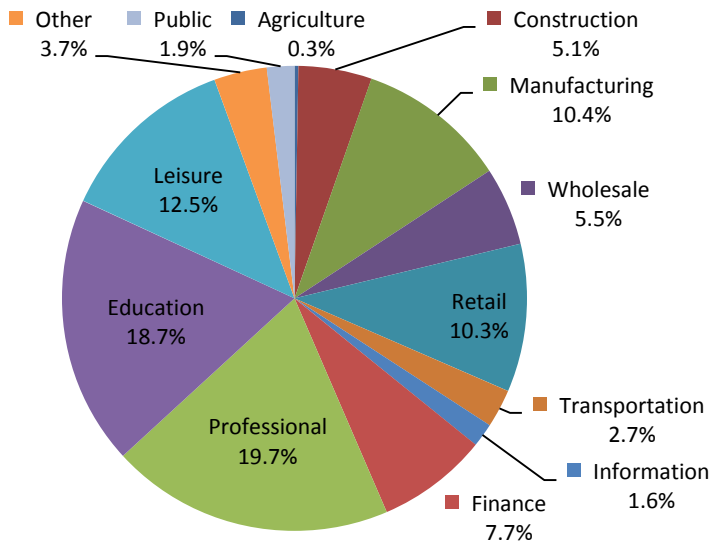
Jobs by Sector: 2007



Sources: California Employment Development Department, 2007; InfoGroup; and SCAG.

- Between 2007 and 2012, there were changes in the share of jobs by sector in Orange County. From 2007 to 2012, the share of Education jobs increased from 16.5 percent to 18.7 percent while the share of Construction jobs declined from 7.2 percent to 5.1 percent.

Jobs by Sector: 2012

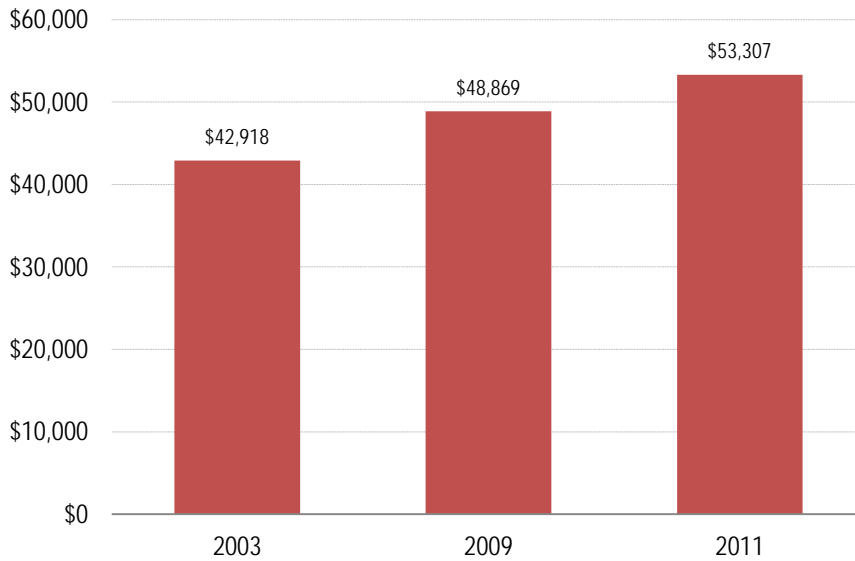


Sources: California Employment Development Department, 2012; InfoGroup; and SCAG.

- In 2012, the Professional sector was the largest job sector, accounting for 19.7 percent of total jobs in the county.
- Other large sectors included Education (18.7 percent), Leisure (12.5 percent), and Manufacturing (10.4 percent).
- See Methodology Section for industry sector definitions.

Average Salaries

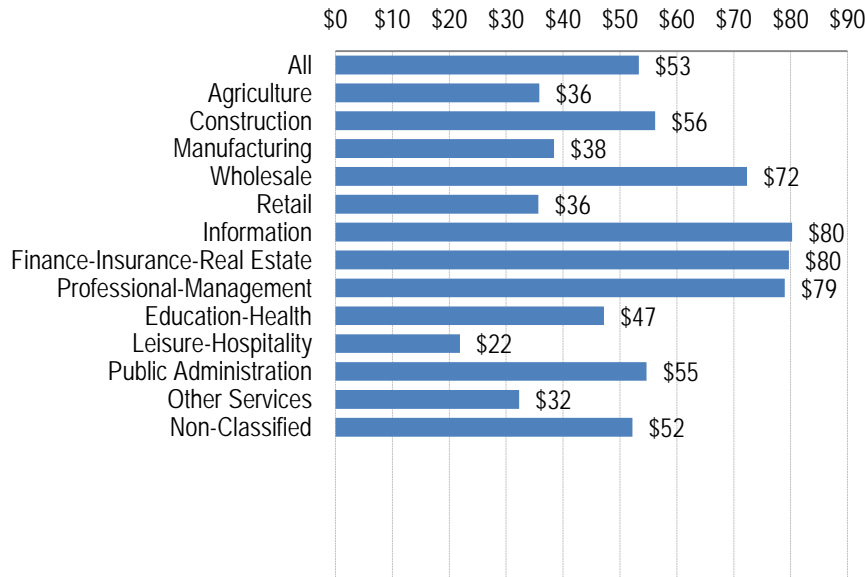
Average Annual Salary Per Job: 2003 2009 and 2011



Source: California Employment Development Department, 2003, 2009, 2011

- Average salaries for jobs located in the county increased from \$42,918 in 2003 to \$53,307 in 2011, a 24.2 percent change.

Average Annual Salary by Sector: 2011 (in \$ thousands)

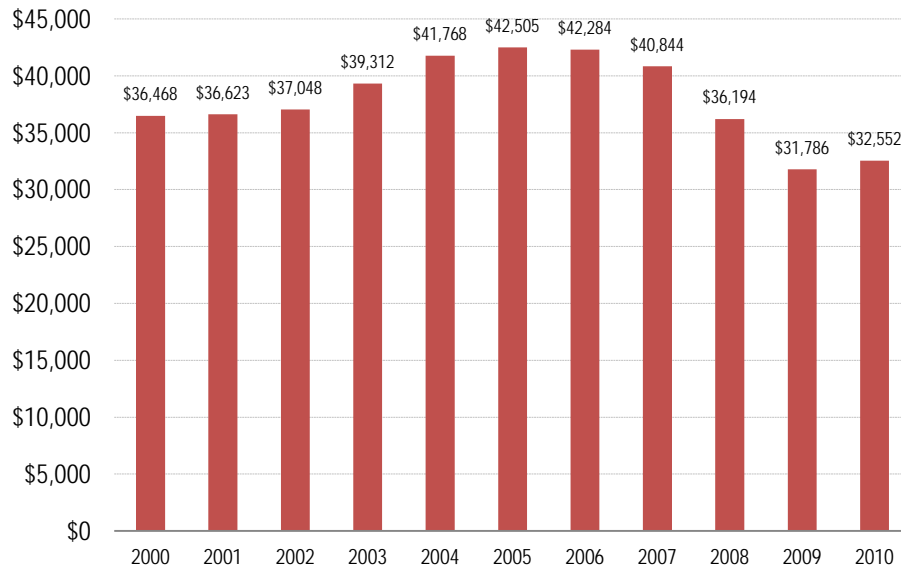


Source: California Employment Development Department, 2011

- In 2011, the sector providing the highest salary per job in the county was Information (\$80,237).
- The Leisure-Hospitality sector provided the lowest annual salary per job (\$21,875).

VII. Retail Sales

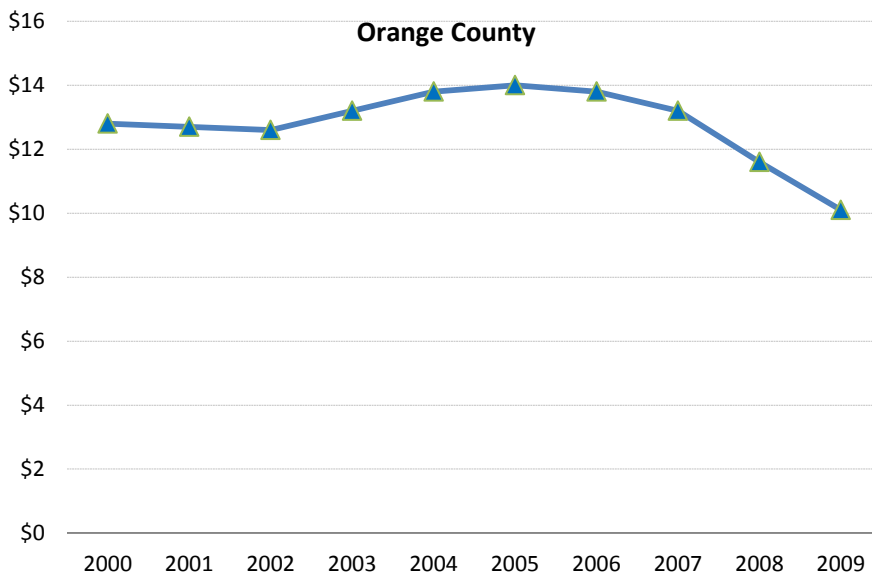
Real Retail Sales: 2000 - 2010 (in 2010 \$ millions)



Source: California Board of Equalization, 2000-2010

- Real retail sales (inflation adjusted) in Orange County increased by 16.6 percent between 2000 and 2005.
- Real retail sales decreased by 23.4 percent between 2005 and 2010.

Real Retail Sales per Person: 2000 - 2010 (in 2010 \$ thousands)

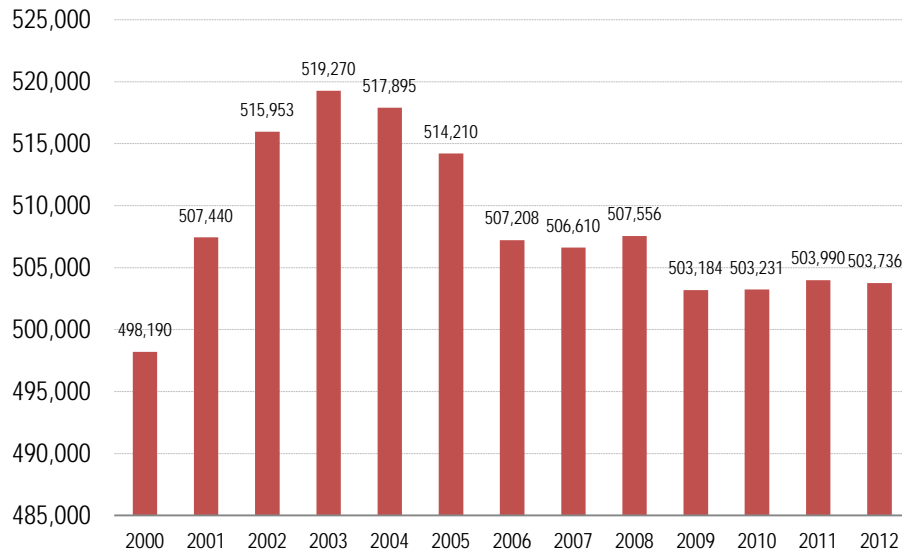


Source: California Board of Equalization, 2000-2010

- Between 2000 and 2010, real retail sales per person for the county decreased from \$12,812 to \$10,814.

VIII. Education

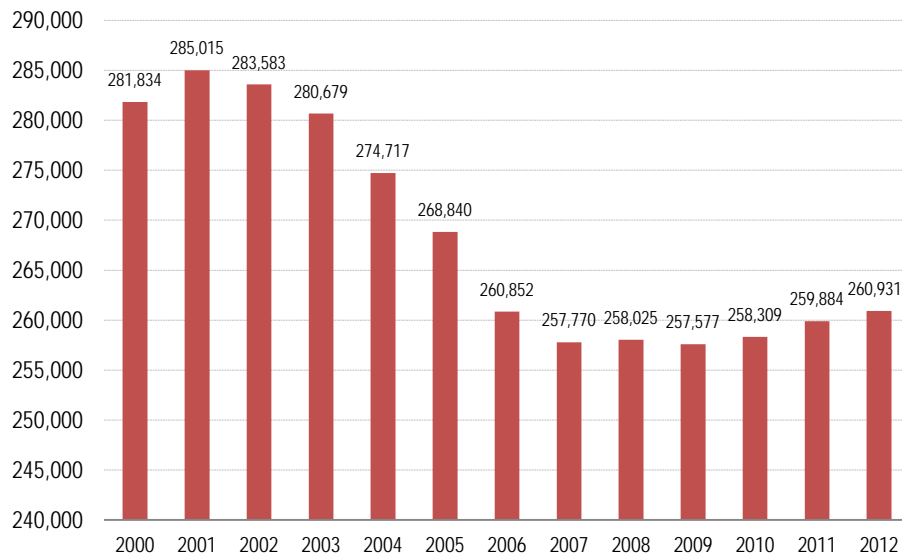
K-12 Public School Student Enrollment: 2000 - 2012



Source: National Center for Education Statistics, 2000 - 2012

- Between 2000 and 2012, total K-12 public school enrollment for schools within Orange County increased by 5,546 students, or about 1.1 percent.

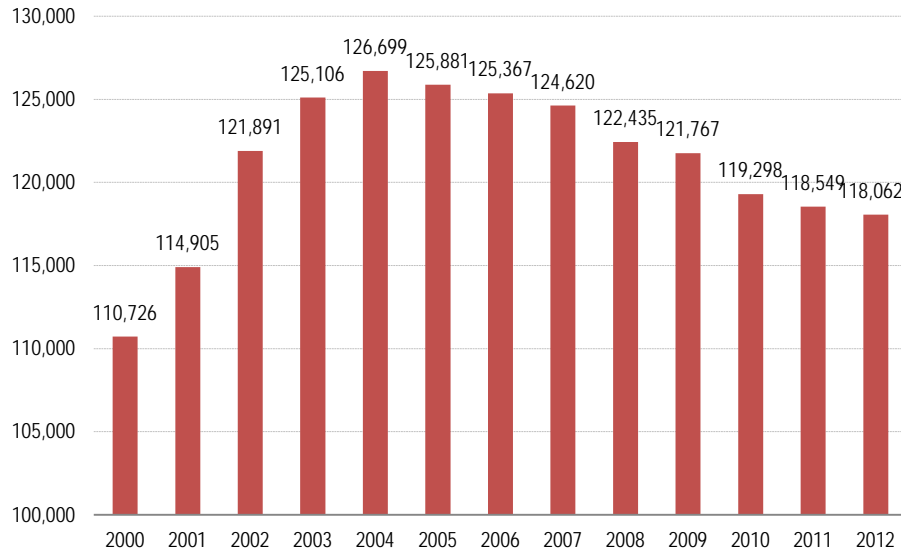
K-6 Public School Student Enrollment: 2000 - 2012



Source: National Center for Education Statistics, 2000 - 2012

- Between 2000 and 2012, total public elementary school enrollment decreased by 20,903 students or 7.4 percent.

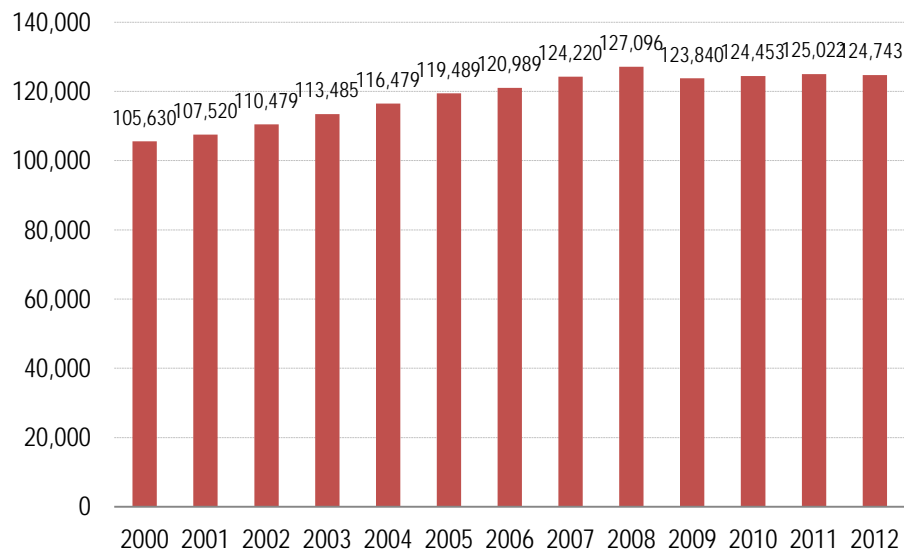
Grades 7-9 Public School Student Enrollment: 2000 - 2012



Source: National Center for Education Statistics, 2000 - 2012

- Between 2000 and 2012, total public school enrollment for grades 7-9 increased by 7,336 students or 6.6 percent.

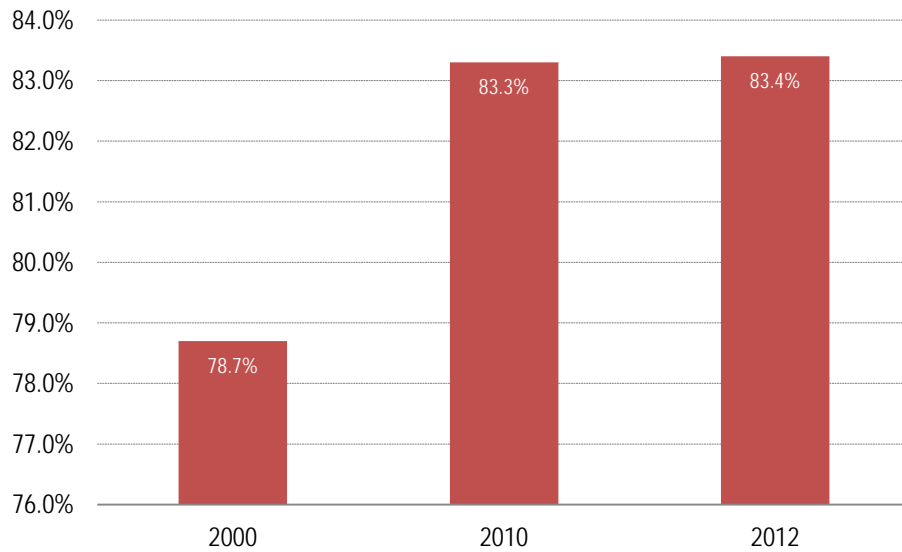
Grades 10-12 Public School Student Enrollment: 2000 - 2012



Source: National Center for Education Statistics, 2000 - 2012

- Between 2000 and 2012, total public school enrollment for grades 10-12 increased by 19,113 students, about 18.1 percent.

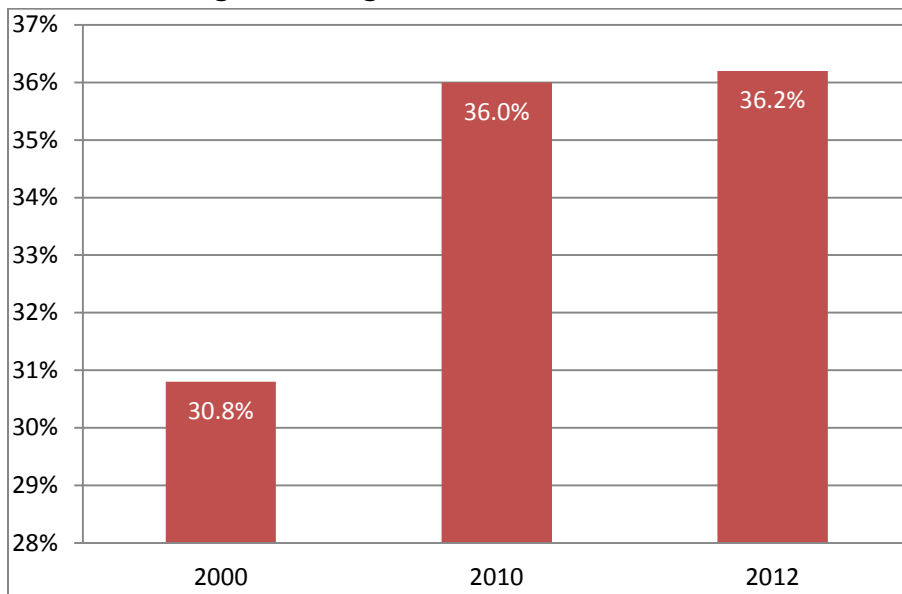
Percent of Population 25 Years and Over Completing High School or Higher



Sources: 2000 and 2010 Census; Nielsen Co., 2012

- In 2012, 83.4 percent of the population 25 years and over completed high school or higher, which is higher than 2000 level.

Percent of Population 25 Years and Over Completing a Bachelor's Degree or Higher

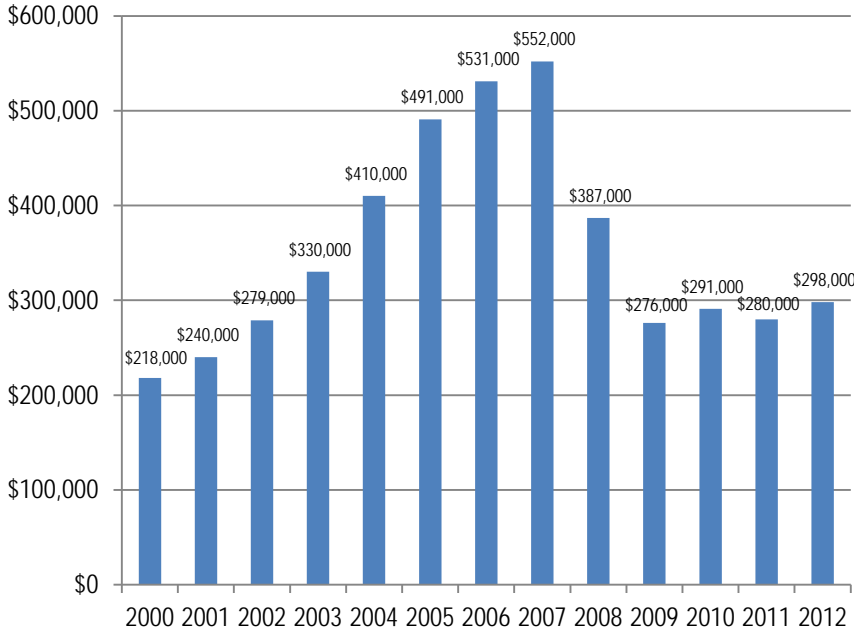


Sources: 2000 and 2010 Census; Nielsen Co., 2012

- In 2012, 36.2 percent of the population 25 years and over completed a Bachelor's degree or higher, which is higher than 2000.

IX. SCAG Regional Highlights

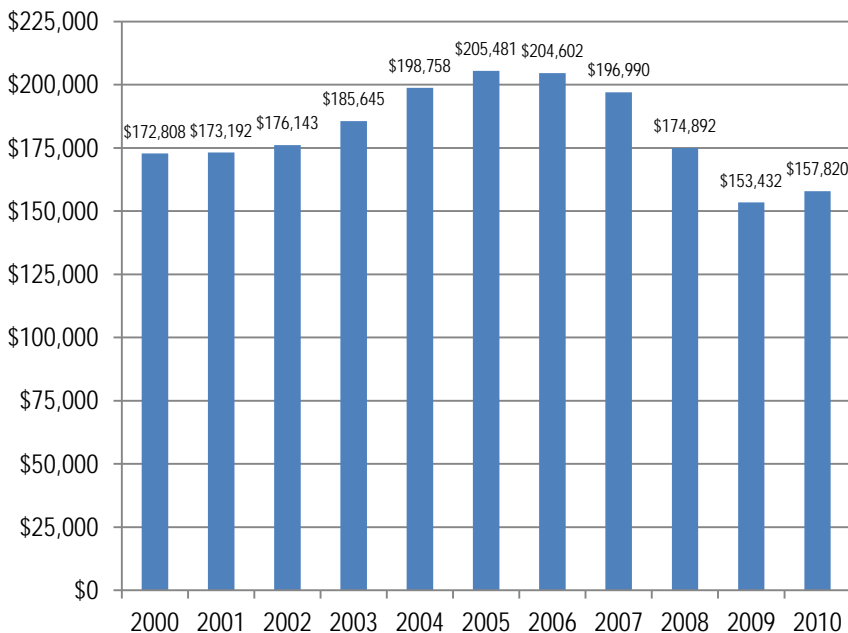
SCAG Regional Median Home Sales Price: 2000 – 2012



Source: MDA Data Quick, 2012

- After reaching its peak in 2007, the median sales price for existing homes in the SCAG region dropped by almost half in 2011 from its 2007 level and rebounded slightly in 2012.
- Median home sales price was calculated based on total existing home sales in the SCAG region.

SCAG Regional Real Retail Sales: 2000 - 2010 (in 2010 \$ millions)



Source: California Board of Equalization, 2000-2010

- Retail sales tend to follow closely with trends in personal income, employment rates, and consumer confidence.
- Between 2000 and 2005, real retail sales increased steadily by 19 percent but then dropped between 2005 and 2009 by \$52 billion, or 25 percent.
- In 2010, total real retail sales were nine percent lower than the 2000 level.

X. Data Sources

California Department of Finance, Demographic Research Unit

California Employment Development Department, Labor Market Information Division

California State Board of Equalization

Construction Industry Research Board

InfoGroup

MDA Data Quick

National Center for Education Statistics

Nielsen Company

U.S. Census Bureau

XI. Methodology

SCAG's Local Profiles utilizes the most up-to-date information from a number of publically available sources, including the Census Bureau, California Department of Finance, and the National Center for Educational Statistics. In the event that public information is not available or is not the most recent, SCAG contracts with a number of private entities to obtain regional data. The following sections describe how each data source was compiled to produce the information displayed in the preceding report.

Statistical Summary Table

In the Statistical Summary Table (page 3), the values in field "Jurisdiction Relative to County/Region" are the differences between the jurisdiction's value and the county/region value, except for the following categories which represent the jurisdiction's value as a share of the county (or in the case of an entire county as a share of the region): Population, Number of Households, Number of Housing Units, Number of Jobs, Total Jobs Change, and K-12 Student Enrollment.

Median Age, Homeownership Rate, and Median Household Income are based on Nielsen Company data. Number of Housing Units is based on the 2010 Census and estimates from the California Department of Finance. Data for all other categories are referenced throughout the report.

Population Section

Where referenced, data from 2000 to 2012 was taken from the California Department of Finance's (DOF) E-5 estimates, were published in May 2012. This dataset was benchmarked to population figures from the 2000 and 2010 U.S. Decennial Censuses. Data relating to population by age group and by race/ethnicity was derived from the 2000 and 2010 U.S. Decennial Censuses, and Nielsen Co. The 2000 figure was based on U.S. Decennial Census figures for April 1, 2000 and the 2010 figure was based on U.S. Decennial Census figures for April 1, 2010.

Below are definitions for race and ethnicity, which are taken from the U.S. Census Bureau. The Hispanic or Latino origin category is:

- A person of Cuban, Mexican, Puerto Rican, South or Central American, or other Spanish culture or origin, regardless of race.

The race categories are:

- American Indian or Alaska Native – A person having origins in any of the original peoples of North and South America (including Central America), and who maintains tribal affiliation or community attachment.
- Asian – A person having origins in any of the original peoples of the Far East, Southeast Asia, or the Indian subcontinent including, for example, Cambodia, China, India, Japan, Korea, Malaysia, Pakistan, the Philippine Islands, Thailand, and Vietnam.
- Black or African American – A person having origins in any of the black racial groups of Africa, including those who consider themselves to be "Haitian."
- White – A person having origins in any of the original peoples of Europe, North Africa, or the Middle East.

- Some other race – This category includes Native Hawaiian or Other Pacific Islander (a person having origins in any of the original peoples of Hawaii, Guam, Samoa, or other Pacific Islands) and all other responses not included in the "American Indian or Alaska Native," "Asian," "Black or African American," and "White" race categories described above.

Charts for population based on age were tabulated using 2000 and 2010 U.S. Decennial Census data and Nielsen Company data for 2012 and 2018. Charts for race/ethnicity were tabulated using 2000 and 2010 Census data and Nielsen Company data for 2012.

Households Section

The 2000 figure was based on U.S. Decennial Census figures for April 1, 2000 and the 2010 figure was based on U.S. Decennial Census figures for April 1, 2010. Information for 2012 was supplied by the Nielsen Company. Average household size was developed using information from the California Department of Finance (DOF). Households by size was calculated based upon Nielsen Company Data.

Housing Section

Housing units are the total number of both vacant and occupied units. Housing units by housing type information was developed using data from California Department of Finance (DOF). Age of housing stock information is from the Nielsen Company.

The number of residential units with permits issued was obtained using Construction Industry Research Board data, which are collected by counties from self-reporting by individual jurisdictions. It represents both single family and multifamily housing units that were permitted to be built, along with building permits that were issued for improvements to existing residential structures (e.g., reroofs, remodels, etc.). Please note that SCAG opted to report the annual number of permits issued by each jurisdiction which may be different than the number of housing units completed or constructed annually. This was done using a single data source which provides consistent data for all jurisdictions.

The median home sales price, compiled from MDA Data Quick, was calculated based on total resales of existing homes in the jurisdiction, including single family units and condominiums. The median price does not reflect the entire universe of housing in the jurisdictions, only those that were sold within the calendar year.

Transportation Section

The journey to work data for the year 2000 was obtained by using the 2000 U.S. Decennial Census Summary File 3. Data from 2010 is based on the 2010 U.S. Decennial Census. Information for 2012 was provided by the Nielsen Company.

Employment Section

Data sources for estimating jurisdiction employment and wage information include the 2010 U.S. Decennial Census – Local Employment Dynamics Survey, and information from the California Employment Development Department, InfoGroup, and SCAG for years 2007-2012. In many instances, employment totals from individual businesses were geocoded and aggregated to the jurisdictional level.

Employment information provided by industry type is defined by the North American Industry Classification System (NAICS). Although the NAICS provides a great level of detail on industry definitions for all types of businesses in North America, for the purposes of this report, this list of industries has been summarized into the following major areas: agriculture, construction, manufacturing, wholesale, retail, information, finance/insurance/real estate, professional/management, education/health, leisure/hospitality, public administration, other services, and non-classified industries. A brief description of each major industry area is provided below:

- Agriculture – This industry includes crop production, animal production and aquaculture, forestry and logging, fishing hunting and trapping, and support activities for agriculture and forestry.
- Construction – Industries under this umbrella involve the construction of buildings, heavy and civil engineering construction, and specialty trade contractors.
- Manufacturing – This group includes the processing of raw material into products for trade, such as food manufacturing, apparel manufacturing, wood product manufacturing, petroleum and coal products manufacturing, chemical manufacturing, plastics and rubber products manufacturing, nonmetallic mineral product manufacturing, primary metal manufacturing, etc.
- Wholesale – Wholesale industries do business in the trade of raw materials and durable goods.
- Retail – Retail industries engage in the sale of durable goods directly to consumers.
- Information – Businesses in this industry specialize in the distribution of content through a means of sources, including newspaper, periodicals, books, software, motion pictures, sound recording, radio and television broadcasting, cable or subscription programming, telecommunications, data processing/hosting, and other information mediums.
- Finance/Insurance/Real Estate – This sector includes businesses associated with banking, consumer lending, credit intermediation, securities brokerage, commodities exchanges, health/life/medical/title/property/casualty insurance agencies and brokerages, and real estate rental/leasing/sales.
- Professional Management – This industry involves businesses that specialize in professional/scientific/technical services, management of companies and enterprises, and administrative and support services. Types of establishments that would fall under this category range from law offices, accounting services, architectural/engineering firms, specialized design services, computer systems design and related services, management consulting firms, scientific research and development services, advertising firms, office administrative services, facilities support services, amongst many others.
- Education/Health – Organizations that fall into this family include elementary and secondary schools, junior colleges, universities, professional schools, technical and trade schools, medical offices, dental offices, outpatient care centers, medical and diagnostic laboratories, hospitals, nursing and residential care facilities, social assistance services, emergency relief services, vocational rehabilitation services, and child day care services.
- Leisure/Hospitality – This family of industries includes organizations in the performing arts, spectator sports, museums, amusement/recreation industries, traveler accommodations, and food services and drinking places.
- Public Administration – This classification includes public sector organizations, including legislative bodies, public finance institutions, executive and legislative offices, courts, police protection, parole offices, fire protection, correctional

institutions, administration of governmental programs, space research and technology, and national security.

- Other Services – Groups in this group include, for example, automotive repair and maintenance, personal and household goods repair and maintenance, personal laundry services, dry-cleaning and laundry services, religious services, social advocacy organizations, professional organizations, and private households
- Non-Classified – Non-classified organizations involve work that is not included in the North American Industry Classification System.

Retail Sales Section

Retail sales data is obtained from the California Board of Equalization, which does not publish individual point-of-sale data. All data is adjusted for inflation.

Education Section

Student enrollment data is based on public school campuses that are located within each jurisdiction's respective boundary. Enrollment numbers by grade within a given jurisdiction are tabulated based upon data obtained from the National Center for Education Statistics.

Regional Highlights

Information for this section was developed through data from MDA Data Quick and the California Board of Equalization.

Data Sources Section

In choosing the data sources used for this report, the following factors were considered:

- Availability for all jurisdictions in the SCAG region,
- The most recognized source on the subject,
- Data sources within the public domain, and

- Data available on an annual basis.

The same data sources are used for all Local Profiles (except where noted) to maintain overall reporting consistency. The jurisdictions are not constrained from using other data sources for their planning activities.

The preparation of this report has been financed in part through grants from the Federal Highway Administration and Federal Transit Administration, U.S. Department of Transportation, under the Metropolitan Planning Program, Section 104(f) of Title 23, U.S. Code. The contents of this report do not necessarily reflect the official views or policy of the U.S. Department of Transportation. Additional assistance was provided by the California Department of Transportation.

XII. Acknowledgments

SCAG Management

Hasan Ikhata, Executive Director
Sharon Neely, Chief Deputy Executive Director
Debbie Dillon, Deputy Executive Director, Administration
Joann Africa, Chief Counsel
Huasha Liu, Director, Land Use & Environmental Planning
Rich Macias, Director, Transportation Planning
Catherine Chavez, Chief Information Officer
Darin Chidsey, Acting Director, Strategy, Policy & Public Affairs
Basil Panas, Chief Financial Officer

Project Manager

Ping Chang, Program Manager, Land Use & Environmental Planning

Project Core Team

Javier Minjares, Regional Planner Specialist
Jonathan Raymond, Senior Programmer Architect
Jung Seo, Senior Regional Planner
Leah Murphy, UCLA Fellow
Ma'Ayn Johnson, Senior Regional Planner
Kimberly Clark, Senior Regional Planner
Gurpreet Kaur, Senior Software Quality Assurance Engineer
Dan Nguyen, Senior Programmer Analyst

Reproduction

Pat Camacho, Office Services Specialist
Catherine Rachal, Office Services Specialist

Assistance from the following SCAG staff members is also recognized:

Ludlow Brown, Web/Graphics Designer
Joongkoo Cho, Associate Regional Planner
Christine Fernandez, Senior Regional Planner
Carolyn Hart, Lead Graphics Designer
Hsi-Hwa Hu, Transportation Modeler IV
Cheol-Ho Lee, Senior Regional Planner
Pamela Lee, Associate Regional Planner
Jonathan Nadler, Manager, Compliance & Performance Monitoring
Angela Rushen, Manager, Media and Public Affairs
Frank Wen, Manager, Research & Analysis
Alex Yu, Acting Manager Application Development
Ying Zhou, Regional Planner Specialist
Marisol Maciel-Cervantes, SCAG Intern
Lu Lu, SCAG Intern

**Southern California Association of Governments
Regional Council Roster
May 2013**

Members	Representing	
President Hon. Glen Becerra	<i>Simi Valley</i>	District 46
1st Vice-President Hon. Greg Pettis	<i>Cathedral City</i>	District 2
2nd Vice-President Hon. Carl Morehouse	<i>San Buenaventura</i>	District 47
Imm. Past President Hon. Pam O'Connor	<i>Santa Monica</i>	District 41
Hon. Jack Terrazas		Imperial County
Hon. Michael Antonovich		Los Angeles County
Hon. Mark Ridley-Thomas		Los Angeles County
Hon. Shawn Nelson		Orange County
Hon. Gary Ovitt		San Bernardino County
Hon. Jeff Stone		Riverside County
Hon. Linda Parks		Ventura County
VACANT		OCTA
Hon. Robert "Bob" Botts	<i>Banning</i>	RCTC
Hon. Alan Wapner	<i>Ontario</i>	SANBAG
Hon. Keith Millhouse	<i>Moorpark</i>	VCTC
VACANT		ICTC
Hon. Cheryl Viegas-Walker	<i>El Centro</i>	District 1
Hon. Jim Hyatt	<i>Calimesa</i>	District 3
Hon. Jeff DeGrandpre	<i>Eastvale</i>	District 4
Hon. Ronald Roberts	<i>Temecula</i>	District 5
Hon. Jon Harrison	<i>Redlands</i>	District 6
Hon. Larry McCallon	<i>Highland</i>	District 7
Hon. Deborah Robertson	<i>Rialto</i>	District 8
Hon. Paul Eaton	<i>Montclair</i>	District 9
Hon. Ed Graham	<i>Chino Hills</i>	District 10
Hon. Bill Jahn	<i>Big Bear Lake</i>	District 11
Hon. Mike Munzing	<i>Aliso Viejo</i>	District 12
Hon. Kathryn McCullough	<i>Lake Forest</i>	District 13
Hon. Steven Choi	<i>Irvine</i>	District 14
Hon. Leslie Daigle	<i>Newport Beach</i>	District 15
Hon. Michele Martinez	<i>Santa Ana</i>	District 16
Hon. John Nielsen	<i>Tustin</i>	District 17
Hon. Leroy Mills	<i>Cypress</i>	District 18
Hon. Kris Murray	<i>Anaheim</i>	District 19
VACANT		District 20
Hon. Art Brown	<i>Buena Park</i>	District 21
Hon. Brett Murdock	<i>Brea</i>	District 22
Hon. Bruce Barrows	<i>Cerritos</i>	District 23
Hon. Gene Daniels	<i>Paramount</i>	District 24
Hon. Mario Guerra	<i>Downey</i>	District 25

Southern California Association of Governments
Regional Council Roster
 May 2013

Members		Representing
Hon. Jim Morton	<i>Lynwood</i>	District 26
Hon. Frank Gurulé	<i>Cudahy</i>	District 27
Hon. Dan Medina	<i>Gardena</i>	District 28
Hon. Steven Neal	<i>Long Beach</i>	District 29
Hon. James Johnson	<i>Long Beach</i>	District 30
Hon. Roy Francis	<i>La Habra Heights</i>	District 31
Hon. Margaret Clark	<i>Rosemead</i>	District 32
Hon. Gene Murabito	<i>Glendora</i>	District 33
Hon. Barbara Messina	<i>Alhambra</i>	District 34
Hon. Margaret E. Finlay	<i>Duarte</i>	District 35
Hon. Donald Voss	<i>La Cañada/Flintridge</i>	District 36
Hon. Carol Herrera	<i>Diamond Bar</i>	District 37
Hon. Paula Lantz	<i>Pomona</i>	District 38
Hon. James Gazeley	<i>Lomita</i>	District 39
Hon. Judy Mitchell	<i>Rolling Hills Estates</i>	District 40
VACANT		
Hon. Steven Hofbauer	<i>Palmdale</i>	District 43
Hon. Mark Rutherford	<i>Westlake Village</i>	District 44
Hon. Carmen Ramirez	<i>Oxnard</i>	District 45
Hon. Ed P. Reyes	<i>Los Angeles</i>	District 48
Hon. Paul Krekorian	<i>Los Angeles</i>	District 49
Hon. Dennis Zine	<i>Los Angeles</i>	District 50
Hon. Tom LaBonge	<i>Los Angeles</i>	District 51
Hon. Paul Koretz	<i>Los Angeles</i>	District 52
VACANT	<i>Los Angeles</i>	District 53
Hon. Richard Alarcón	<i>Los Angeles</i>	District 54
Hon. Bernard C. Parks	<i>Los Angeles</i>	District 55
Hon. Jan Perry	<i>Los Angeles</i>	District 56
Hon. Herb Wesson, Jr.	<i>Los Angeles</i>	District 57
Hon. Bill Rosendahl	<i>Los Angeles</i>	District 58
Hon. Mitchell Englander	<i>Los Angeles</i>	District 59
Hon. Eric Garcetti	<i>Los Angeles</i>	District 60
Hon. José Huizar	<i>Los Angeles</i>	District 61
Hon. Joe Buscaino	<i>Los Angeles</i>	District 62
Hon. Karen Spiegel	<i>Corona</i>	District 63
Hon. Matthew Harper	<i>Huntington Beach</i>	District 64
Hon. Ryan McEachron	<i>Victorville</i>	District 65
Hon. Lupe Ramos Watson	<i>Indio</i>	District 66
Hon. Marsha McLean	<i>Santa Clarita</i>	District 67
VACANT		Tribal Government

**Southern California Association of Governments
Regional Council Roster**

May 2013

Members		Representing
Hon. Lisa Bartlett	<i>Dana Point</i>	Representative TCA
Mr. Randall Lewis	<i>Lewis Group of Companies</i>	(Ex-Officio)
Hon. Antonio Villaraigosa	<i>Los Angeles</i>	(At-Large)

Notes: